
EDI Implementation Guidelines

INVOIC UN D96A



INVOIC Invoice Message

Introduction:

A message claiming payment for goods or services supplied under conditions agreed between the seller and the buyer.

The United Nations Standard Invoice Message, with correct data qualification, serves also as the specification for Debit Note and Credit Note messages. Throughout this document, the reference to 'Invoice' may be interpreted as conveying the wider meaning of 'Invoice/Credit Note/Debit Note'.

Heading Section:

<u>Page No.</u>	<u>Pos. No.</u>	<u>Seg. ID</u>	<u>Name</u>	<u>Base Status</u>	<u>Adiant Status</u>	<u>Max.Use</u>	<u>Group Repeat</u>	<u>Notes and Comments</u>
14	0010	UNH	Message Header	M	M	1		
15	0020	BGM	Beginning of Message	M	M	1		
16	0030	DTM	Date/Time/Period	M	M	35		
17	0040	PAI	Payment Instructions	C	O	1		
18	0050	ALI	Additional Information	C	O	5		
19	0070	FTX	Free Text	C	O	10		
	0080		Segment Group 1: RFF-DTM	C	O		99	
23	0090	RFF	Reference	M	M	1		
24	0100	DTM	Date/Time/Period	C	O	5		
	0110		Segment Group 2: NAD-FII-SG3-SG5	C	O		99	
	0110		Name and Address	M	M	1		
26	0120	NAD	Financial Institution Information	C	O	5		
27	0140	FII	Segment Group 3: RFF	C	O		9999	
	0150							
29	0160	RFF	Segment Group 5: CTA-COM	C	O		5	
	0210		Contact Information	M	M	1		
31	0220	CTA	Communication Contact	C	O	5		
32	0230	COM	Segment Group 6: TAX-MOA	C	O		5	
	0240		Duty/Tax/Fee Details	M	M	1		
35	0250	TAX	Monetary Amount	C	O	1		
36	0260	MOA	Segment Group 7: CUX-DTM	C	O		5	
	0280		Currencies	M	M	1		
38	0290	CUX	Date/Time/Period	C	O	5		
39	0300	DTM	Segment Group 8: PAT-DTM-PCD-MOA-PALEU	C	O		10	
	0310		Payment Terms Basis	M	M	1		
42	0320	PAT	Date/Time/Period	C	O	5		
43	0330	DTM	Percentage Details	C	O	1		
44	0340	PCD						

45	0350	MOA	Monetary Amount	C	O	1	
46	0360	PAI	Payment Instructions	C	O	1	
47	0370	FII	Financial Institution Information	C	O	1	
	0380		Segment Group 9: TDT-SG10	C	O	10	
49	0390	TDT	Details of Transport	M	M	1	
	0400		Segment Group 10: LOC-DTM	C	O	10	
52	0410	LOC	Place/Location Identification	M	M	1	
53	0420	DTM	Date/Time/Period	C	O	5	
	0460		Segment Group 12: TOD-LOC	C	O	5	
55	0470	TOD	Terms of Delivery or Transport	M	M	1	
56	0480	LOC	Place/Location Identification	C	O	2	
	0490		Segment Group 13: PAC	C	O	1000	
58	0500	PAC	Package	M	M	1	
	0570		Segment Group 15: ALC-SG17-SG18-SG19-SG20-SG21	C	O	9999	
60	0580	ALC	Allowance or Charge	M	M	1	
	0630						
62	0640	QTY	Quantity	M	M	1	
	0660						
65	0670	PCD	Percentage Details	M	M	1	
	0690						
67	0700	MOA	Monetary Amount	M	M	1	
	0720						
69	0730	RTE	Rate Details	M	M	1	
	0750		Segment Group 21: TAX-MOA	C	O	5	
71	0760	TAX	Duty/Tax/Fee Details	M	M	1	
72	0770	MOA	Monetary Amount	C	O	1	

Detail Section:

<u>Page No.</u>	<u>Pos. No.</u>	<u>Seg. ID</u>	<u>Name</u>	<u>Base Status</u>	<u>User Status</u>	<u>Max.Use</u>	<u>Group Repeat</u>	<u>Notes and Comments</u>
	0890		Segment Group 25: LIN-PIA-IMD-MEA-QTY-ALI-DTM-GIN-QVR-FTX-SG26-SG27-SG28-SG29-SG30-SG32-SG33-SG34-SG38-SG44-SG46	C	O		9999999	
75	0900	LIN	Line Item	M	M	1		
76	0910	PIA	Additional Product Id	C	O	25		
78	0920	IMD	Item Description	C	O	10		
79	0930	MEA	Measurements	C	O	5		
80	0940	QTY	Quantity	C	O	5		
81	0960	ALI	Additional Information	C	O	5		
82	0970	DTM	Date/Time/Period	C	O	35		
83	0980	GIN	Goods Identity Number	C	O	1000		
84	1000	QVR	Quantity Variances	C	O	1		

85	1020	FTX	Free Text	C	O	5
	1030		Segment Group 26: MOA	C	O	5
87	1040	MOA	Monetary Amount	M	M	1
	1060		Segment Group 27: PAT-DTM-PCD-MOA	C	O	10
89	1070	PAT	Payment Terms Basis	M	M	1
90	1080	DTM	Date/Time/Period	C	O	5
91	1090	PCD	Percentage Details	C	O	1
92	1100	MOA	Monetary Amount	C	O	1
	1110		Segment Group 28: PRI-APR	C	O	25
94	1120	PRI	Price Details	M	M	1
95	1130	APR	Additional Price Information	C	O	1
	1160		Segment Group 29: RFF-DTM	C	O	10
97	1170	RFF	Reference	M	M	1
98	1180	DTM	Date/Time/Period	C	O	5
	1190		Segment Group 30: PAC-MEA-SG31	C	O	10
100	1200	PAC	Package	M	M	1
101	1210	MEA	Measurements	C	O	10
	1220		Segment Group 31: PCI-GIN	C	O	10
103	1230	PCI	Package Identification	M	M	1
104	1260	GIN	Goods Identity Number	C	O	10
	1270		Segment Group 32: LOC-QTY-DTM	C	O	9999
106	1280	LOC	Place/Location Identification	M	M	1
107	1290	QTY	Quantity	C	O	100
108	1300	DTM	Date/Time/Period	C	O	5
	1310		Segment Group 33: TAX-MOA	C	O	99
110	1320	TAX	Duty/Tax/Fee Details	M	M	1
113	1330	MOA	Monetary Amount	C	O	1
	1350		Segment Group 34: NAD-SG35	C	O	20
115	1360	NAD	Name and Address	M	M	1
	1380		Segment Group 35: RFF	C	O	5
117	1390	RFF	Reference	M	M	1
	1470		Segment Group 38: ALC-ALI-DTM-SG39-SG40-SG41-SG42-SG43	C	O	15
119	1480	ALC	Allowance or Charge	M	M	1
120	1490	ALI	Additional Information	C	O	5
121	1500	DTM	Date/Time/Period	C	O	5
	1510		Segment Group 39: QTY	C	O	1
123	1520	QTY	Quantity	M	M	1
	1540		Segment Group 40: PCD	C	O	1
125	1550	PCD	Percentage Details	M	M	1
	1570		Segment Group 41: MOA	C	O	2
127	1580	MOA	Monetary Amount	M	M	1

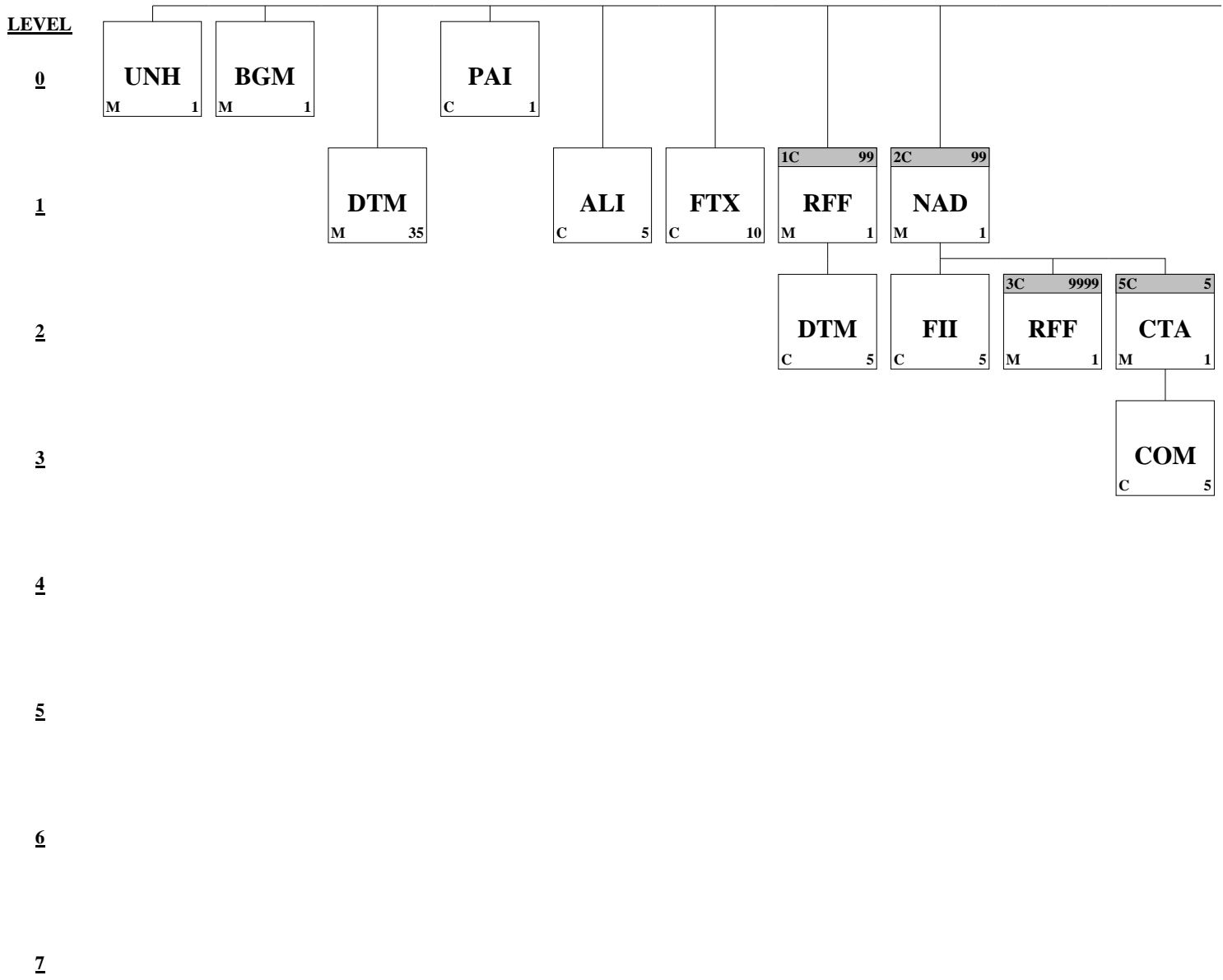
	1600		Segment Group 42: RTE	C	N	1	
129	1610	RTE	Rate Details	M	M	1	
	1630		Segment Group 43: TAX-MOA	C	O	5	
131	1640	TAX	Duty/Tax/Fee Details	M	M	1	
132	1650	MOA	Monetary Amount	C	O	1	
	1660		Segment Group 44: TDT	C	O	10	
134	1670	TDT	Details of Transport	M	M	1	
	1710		Segment Group 46: TOD-LOC	C	O	5	
136	1720	TOD	Terms of Delivery or Transport	M	M	1	
137	1730	LOC	Place/Location Identification	C	O	2	

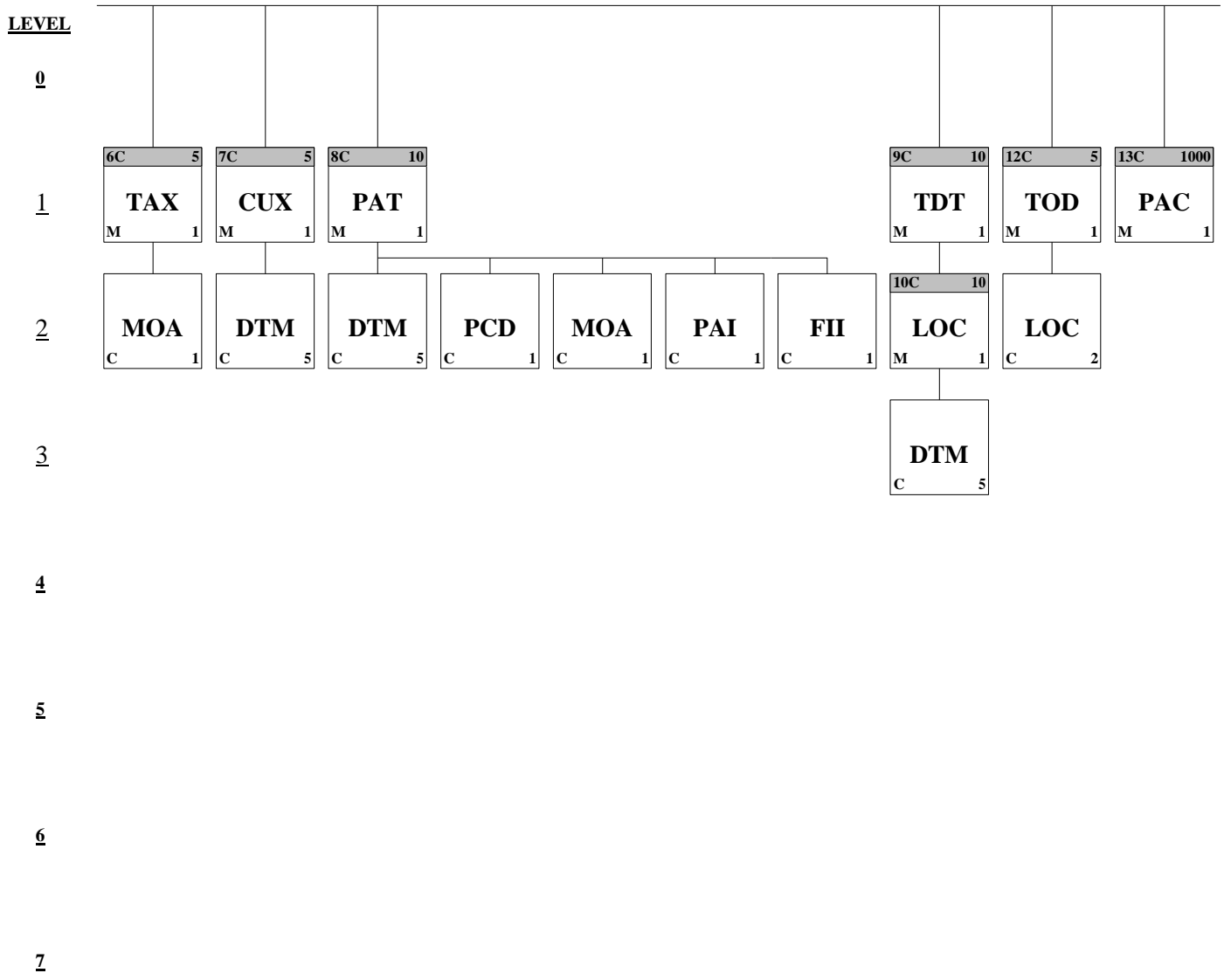
Section Control:

<u>Page No.</u>	<u>Pos. No.</u>	<u>Seg. ID</u>	<u>Name</u>	<u>Base Status</u>	<u>User Status</u>	<u>Max.Use</u>	<u>Group Repeat</u>	<u>Notes and Comments</u>
142	1790	UNS	Section Control	M	M	1		

Summary Section:

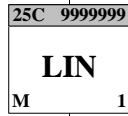
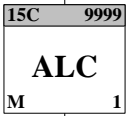
<u>Page No.</u>	<u>Pos. No.</u>	<u>Seg. ID</u>	<u>Name</u>	<u>Base Status</u>	<u>User Status</u>	<u>Max.Use</u>	<u>Group Repeat</u>	<u>Notes and Comments</u>
143	1800	CNT	Control Total	C	O	10		
	1810		Segment Group 48: MOA-SG49	M	M	100		
144	1820	MOA	Monetary Amount	M	M	1		
	1830		Segment Group 49: RFF-DTM	C	O	1		
146	1840	RFF	Reference	M	M	1		
147	1850	DTM	Date/Time/Period	C	O	5		
	1860		Segment Group 50: TAX-MOA	C	O	10		
149	1870	TAX	Duty/Tax/Fee Details	M	M	1		
150	1880	MOA	Monetary Amount	C	O	2		
	1890		Segment Group 51: ALC-ALI-MOA	C	O	15		
152	1900	ALC	Allowance or Charge	M	M	1		
153	1910	ALI	Additional Information	C	O	1		
154	1920	MOA	Monetary Amount	C	O	2		
155	1930	UNT	Message Trailer	M	M	1		



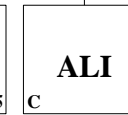
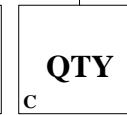
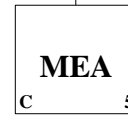
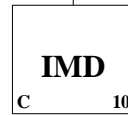
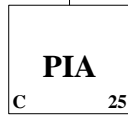
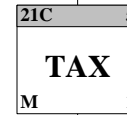
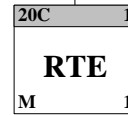
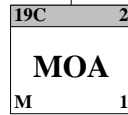
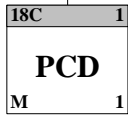
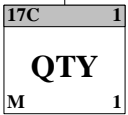


LEVEL

0

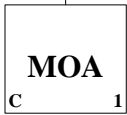


1



2

3



4

5

6

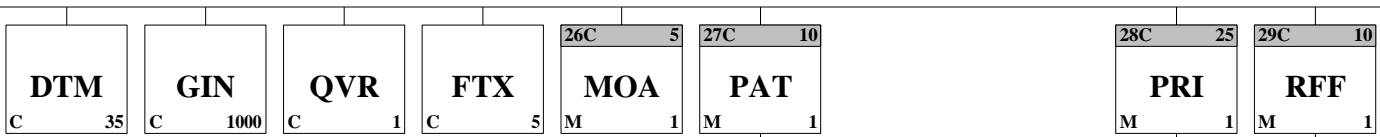
7

LEVEL

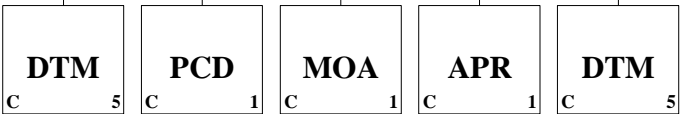
0

1

2



3



4

5

6

7

LEVEL

0

1

2

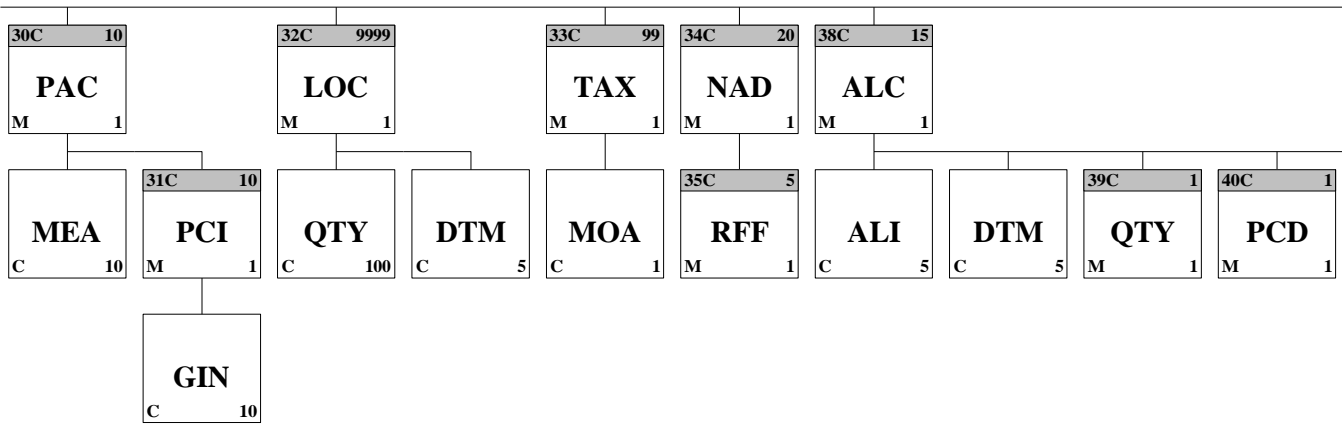
3

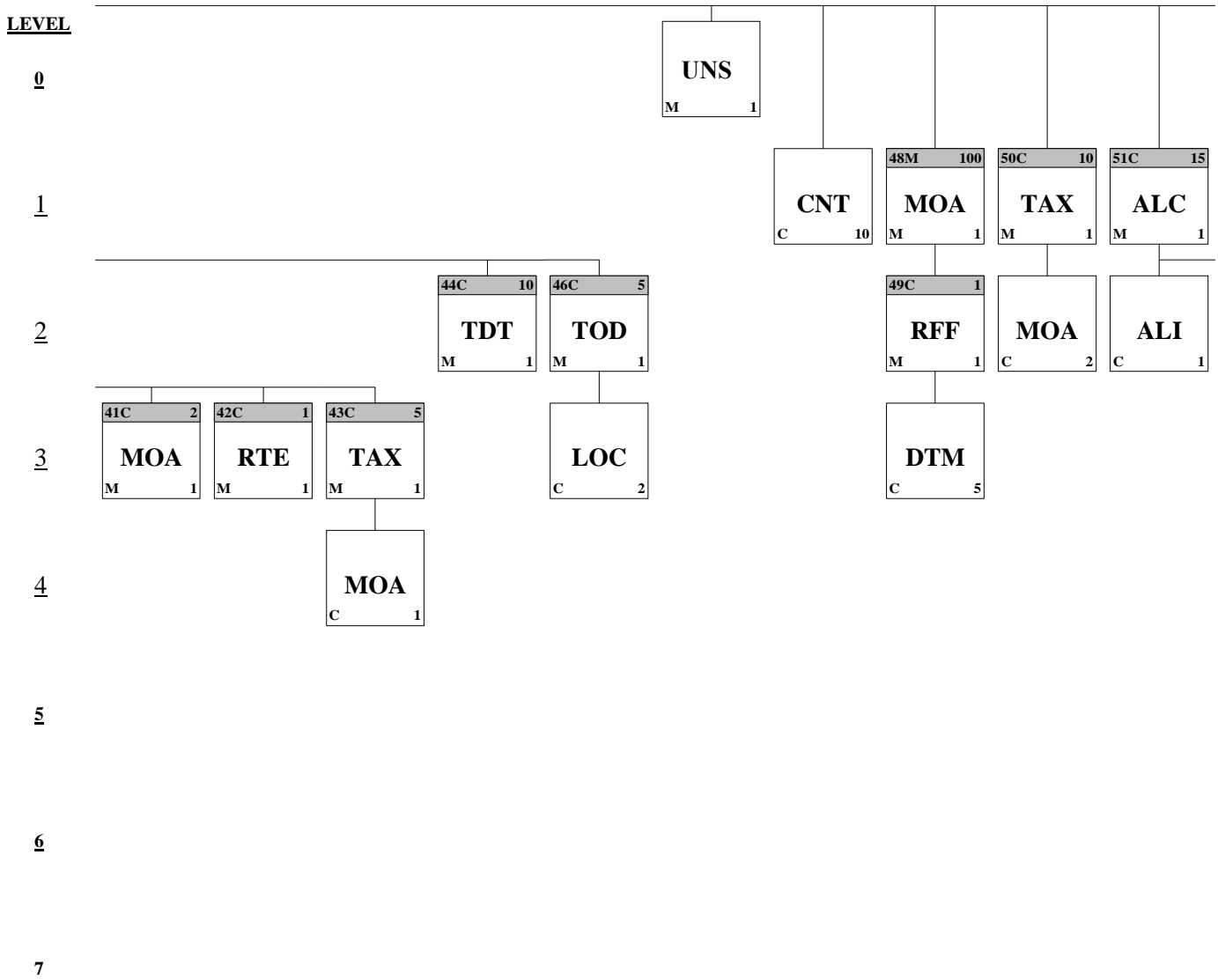
4

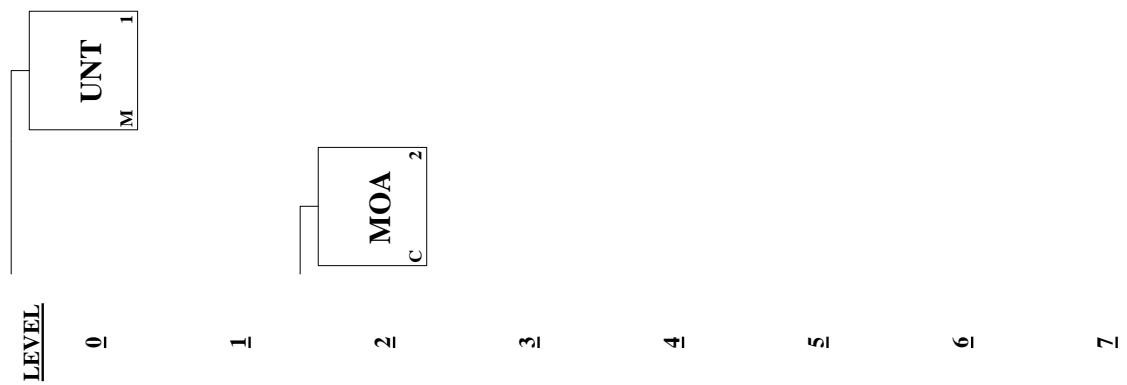
5

6

7







Segment: **UNB** Interchange Header
Position: 0005
Group:
Level: 0
Usage: Mandatory
Max Use: 1
Purpose: To start, identify and specify an interchange.
Notes: 'UNB+UNOC:3+212364:ZZZ+61237:ZZZ+050519:0706+123190505'

Data Element Summary

Data Element	Component Element	Name	Base Attributes	Adiant Attributes
S001		SYNTAX IDENTIFIER	M	M
	0001	Syntax identifier	M a4	M
		UNOA UN/ECE level A		
		UNOB UN/ECE level B		
S002	0002	Syntax version number	M n1	M
		3 Syntax version number 3		
		UNOC UN/ECE level C		
S003		INTERCHANGE SENDER	M	M
	0004	Sender identification	M an..35	M
		The sender identification can be the company EAN or DUNS code or a company specific code.		
	0007	Partner identification code qualifier	C an..4	O
	1 DUNS (Dun & Bradstreet)			
	14 EAN (European Article Numbering Association)			
	ZZZ Mutually defined			
	0008	Address for reverse routing	C an..14	O
S004		INTERCHANGE RECIPIENT	M	M
	0010	Recipient identification	M an..35	M
		The receiver identification can be the company EAN or DUNS code or a company specific code.		
	0007	Partner identification code qualifier	C an..4	O
	1 DUNS (Dun & Bradstreet)			
	14 EAN (European Article Numbering Association)			
	ZZZ Mutually defined			
	0014	Routing address	C an..14	O
S005		DATE AND TIME OF PREPARATION	M	M
	0017	Date of preparation	M n6	M
		Format: YYMMDD		
	0019	Time of preparation	M n4	M
		Format: HHMM		
0020		INTERCHANGE CONTROL REFERENCE	M an..14	M
		Unique reference generated when sending the message to uniquely identify the interchange is repeated in the UNZ segment.		
S005		RECIPIENTS REFERENCE PASSWORD	C	O
	0022	Recipient reference/password	M an..14	M
	0025	Recipient reference/password qualifier	C an2	O

0026	APPLICATION REFERENCE	C	an..14	R
0029	PROCESSING PRIORITY CODE	C	a1	O
0031	ACKNOWLEDGEMENT REQUEST	C	n1	R
0032	COMMUNICATIONS AGREEMENT ID	C	an..35	O
0035	TEST INDICATOR	C	a1	O

Segment: **UNH** Message Header

Position: 0010

Group:

Level: 0

Usage: Mandatory

Max Use: 1

Purpose: A service segment starting and uniquely identifying a message. The message type code for the Invoice message is INVOIC.

Note: Invoice messages conforming to this document must contain the following data in segment UNH, composite S009:

Data element 0065 INVOIC 0052 D 0054 96A
0051 UN

Notes: This segment is used to head, identify and specify a message.

DE's 0065, 0052, 0054, and 0051: Indicate that the message is a UNSM Invoice based on the D.96A directory under the control of the United Nations.

Example :

UNH+1+INVOIC:D:96A:UN'

Data Element Summary

<u>Data Element</u>	<u>Component Element Name</u>	<u>Base Attributes</u>	<u>Adient Attributes</u>
0062	MESSAGE REFERENCE NUMBER	M an..14	M
	Sender's unique message reference. Sequence number of messages in the interchange. DE 0062 in UNT will have the same value. Generated by the sender.		
S009	MESSAGE IDENTIFIER	M	M
	0065 Message type identifier	M an..6	M
	INVOIC Invoice message		
	0052 Message type version number	M an..3	M
	Refer to D.96A Data Element Dictionary for acceptable code values.		
	0054 Message type release number	M an..3	M
	96A Version 96A		
	0051 Controlling agency	M an..2	M
	UN UN/ECE/TRADE/WP.4, United Nations Standard Messages (UNSM)		
	0057 Association assigned code	C an..6	R
0068	COMMON ACCESS REFERENCE	C an..35	N
S010	STATUS OF THE TRANSFER	C	N

0070	Sequence message transfer number	M	n..2	N
0073	First/last sequence message transfer indication	C	a1	N

Segment: **BGM** Beginning of Message

Position: 0020

Group:

Level: 0

Usage: Mandatory

Max Use: 1

Purpose: A segment by which the sender must uniquely identify the invoice by means of its type and number and when necessary its function.

Notes: This segment is used to indicate the type and function of a message and to transmit the identifying number.

It is recommended that the length of the document number be restricted to a maximum of 17 characters.

DE 1001: It is of critical importance to use the appropriate document name qualifier relevant to the message. Codevalue 325 may be used to provide valued despatch information. Before using code value '384', it is advised to check with the local tax authorities the legality of using corrected invoices, as some countries may not allow their use.

DE 1225: The message function, coded is a critical data element in this segment. It applies to all data indicated in the message. Consequently, one separate message has to be provided per type of function required. The following definitions apply for the restricted codes:

1 = Cancellation - The current invoice is being cancelled. A new invoice with its own invoice number will be raised to take its place. It is recommended that if an invoice is incorrect it must be cancelled and a new one issued or a correcting credit/debit note issued referencing the incorrect invoice.

5 = Replace - To cancel and replace a previously sent message identified in the RFF segment. When a buyer issues a pro-forma invoice to cover a transaction the supplier on receipt of this pro-forma issues a replacement to take its place.

7 = Duplicate - Re-transmission involving the same parties, on the specific request of the receiver.

9 = Original - An indication to the receiver that this invoice is an original invoice, i.e., not a replacement or duplicate.

31 = Copy - A copy of an invoice for a third party for information purposes.

43 = Additional transmission - Message already transmitted via another communication channel. This transmission is to provide electronically processable data only.

Example :

BGM+380+432097+9'

This example identifies the document as being an original commercial invoice using the code value 380. The document has the reference number 432097.

BGM+82+MSI5422+9'

This example identifies the document as being a metered services invoice using the code value 82. The document has the reference number MSI5422.

Data Element Summary				Base	Adient
<u>Data Element</u>	<u>Component Element</u>	<u>Name</u>		<u>Attributes</u>	<u>Attributes</u>
C002		DOCUMENT/MESSAGE NAME		C	R
	1001	Document/message name, coded		C an..3	R
		82 Metered services invoice			
		83 Credit note related to financial adjustments			
		84 Debit note related to financial adjustments			
		130 Invoicing data sheet			
		325 Proforma invoice			
		380 Commercial invoice			
		381 Credit note - goods and services			
		382 Commission note			
		383 Debit note - goods and services			
		384 Corrected invoice			
		385 Consolidated invoice			
		386 Prepayment invoice			
		388 Tax invoice			
		389 Self-billed invoice			
		390 Delcredere invoice			
		393 Factored invoice			
		402 Credit note issued by the buyer selfbilled			
		403 Debit note issued by the buyer selfbilled			
	1131	Code list qualifier		C an..3	N
	3055	Code list responsible agency, coded		C an..3	N
	1000	Document/message name		C an..35	O
1004		DOCUMENT/MESSAGE NUMBER		C an..35	M an..17
		Invoice Number assigned by document sender			
1225		MESSAGE FUNCTION, CODED		C an..3	R
		1 Cancellation, not used			
		The current invoice is being cancelled. A new invoice with its own invoice number will be raised to take its place. There is no concept within EANCOM that an invoice may be amended. If an invoice is incorrect it must be cancelled and a new one issued or a correcting credit/debit note issued referencing the incorrect invoice.			
		5 Replace, not used			
		When a buyer issues a pro-forma invoice to cover a transaction the supplier on receipt of this pro-forma issues a replacement to take its place.			
		7 Duplicate, not used			
		Retransmission involving the same parties, on the specific			

		request of the receiver.		
	9	Original		
		An indication to the receiver that this invoice is an original invoice, i.e., not a replacement or duplicate.		
	31	Copy, not used		
		A copy of an invoice for a third party for information purposes.		
	43	Additional transmission, not used		
4343	RESPONSE TYPE, CODED		C an..3	N
	AB	Message acknowledgement		
	NA	No acknowledgement needed		

Segment: **DTM** Date/Time/Period

Position: 0030

Group:

Level: 1

Usage: Mandatory

Max Use: 35

Purpose: A segment specifying general dates and, when relevant, times related to the whole message. The segment must be specified at least once to identify the invoice date. Examples of the use of this DTM segment is: "shipped on date" or "delivery date".

The Date/time/period segment within other Segment groups should be used whenever the date/time/period requires to be logically related to another specified data item e.g. Payment due date is specified within the PAT Segment group.

Notes: This segment is used to specify the date or period of the invoice. It may also be used to specify the date on which the goods were despatched, delivered, or received.

DE 2005: Identification of the 'Document/message date/time' (code value 137) is mandatory in the invoice message.

Example :

DTM+137:19971008:102'

The document date is the 8th of October 1997.

DTM+35:199710151430:203'

The invoice relates to a delivery made on the 15th of October 1997 at 2:30pm.

Data Element Summary

<u>Data Element</u>	<u>Component Element Name</u>	<u>Base Attributes</u>	<u>Adient Attributes</u>
C507	DATE/TIME/PERIOD	M	M
	2005 Date/time/period qualifier	M an..3	M
	11 Despatch date and/or time		

35	Delivery date/time, actual
36	Expiry date
50	Goods receipt date/time
137	Document/message date/time
200	Pick-up/collection date/time of cargo
263	Invoicing period
325	Tax period
44E	Connection date/time (EAN Code)
454	Accounting value date (EAN Code)
95E	Service(s) completed date/time, actual (EAN Code)

2380	Date/time/period	C	an..35	M
2379	Date/time/period format qualifier	C	an..3	M

Refer to D.96A Data Element Dictionary for acceptable code values.

Segment: PAI Payment Instructions

Position: 0040
Group:
Level: 0
Usage: Conditional (Optional)
Max Use: 1

Purpose: A segment requesting or confirming conditions of payment, guarantee and method of payment for the whole invoice. An example of the use of this segment is to specify the type of documentary credit used in the transaction.

Notes: This segment allows the party issuing the Invoice to specify how they would like payment to be made.

Example :

PAI+::42'

DE 4461: Code value '10E, Payment terms defined in the Commercial Account Summary' is used to indicate to the buyer that the payment terms will not be defined in the invoice message but in subsequent commercial account summary message.

Data Element Summary

<u>Data Element</u>	<u>Component Element Name</u>	<u>Base Attributes</u>	<u>User Attributes</u>
C534	PAYMENT INSTRUCTION DETAILS	M	M
4439	Payment conditions, coded	C an..3	O
	Refer to D.96A Data Element Dictionary for acceptable code values.		
4431	Payment guarantee, coded	C an..3	O
	Refer to D.96A Data Element Dictionary for acceptable code values.		
4461	Payment means, coded	C an..3	O
	Refer to D.96A Data Element Dictionary for acceptable code values.		
1131	Code list qualifier	C an..3	O

- Refer to D.96A Data Element Dictionary for acceptable code values.
- 3055 Code list responsible agency, coded C an..3 D**
Refer to D.96A Data Element Dictionary for acceptable code values.
- 4435 Payment channel, coded C an..3 O**
Refer to D.96A Data Element Dictionary for acceptable code values.

Segment: **ALI** Additional Information
Position: 0050
Group:
Level: 1
Usage: Conditional (Optional)
Max Use: 5
Purpose: A segment indicating special conditions related to the total invoice owing to origin, customs preference or other commercial factors.

Notes: This segment is used to specify any special conditions which apply to the goods being invoiced. The country of origin of all the products (if it is the same) may be specified here in the header section.

Example :

ALI+DE'

Data Element Summary

Data Element	Component Element Name	Base Attributes	User Attributes
3239	COUNTRY OF ORIGIN, CODED Use ISO 3166 two alpha country code. Refer to D.96A Data Element Dictionary for acceptable code values.	C an..3	O
9213	TYPE OF DUTY REGIME, CODED Refer to D.96A Data Element Dictionary for acceptable code values.	C an..3	O
4183	SPECIAL CONDITIONS, CODED Refer to D.96A Data Element Dictionary for acceptable code values.	C an..3	O
4183	SPECIAL CONDITIONS, CODED Refer to D.96A Data Element Dictionary for acceptable code values.	C an..3	O
4183	SPECIAL CONDITIONS, CODED Refer to D.96A Data Element Dictionary for acceptable code values.	C an..3	O
4183	SPECIAL CONDITIONS, CODED Refer to D.96A Data Element Dictionary for acceptable code values.	C an..3	O
4183	SPECIAL CONDITIONS, CODED Refer to D.96A Data Element Dictionary for acceptable code values.	C an..3	O

Segment: **FTX** Free Text
Position: 0070
Group:
Level: 1
Usage: Conditional (Optional)
Max Use: 10
Purpose: A segment with free text information, in coded or clear form, used when additional information is needed but cannot be accommodated within other segments. In computer to computer exchanges such text will normally require the receiver to process this segment manually.

Notes: This segment is used to provide free form or coded text information which applies to the complete invoice message.

Use of this segment in free form is not recommended since in most cases it inhibits automatic processing of the Invoice. Coded references to standard texts is an available functionality which enables automatic processing and reduces transmission and processing overheads. Standard texts should be mutually defined among trading partners and can be used to cover legal and other requirements.

Example :

FTX+PUR+1+001::91'

(E.g. Purchasing information standard text code 001 = Please pay this invoice in due time)

Only for **e-ISP** (the EDI version of the existing Integrated Supplier Program):

FTX+PUR+++BRANCHNR/WORK-ORDERNR (e.g. BBBB/YBBB-XXXX(space)CCC)

BBBB = Branch number “/”
Y = Year
BBB = 3 digits branch number “-”
XXXX = Contract number (space)
CCC = Cost code

Dependency Notes :

DE C107: This composite is only used when trading partners have agreed to use mutually defined code values.

DE C108: This composite is only used if coded text can not be used.

DE 3453: The language code is only used to indicate the free text language. It is only used if composite C108 is used.

Data Element Summary

Data Element	Component Element Name	Base Attributes	User Attributes
4451	TEXT SUBJECT QUALIFIER	M an..3	M

Refer to D.96A Data Element Dictionary for acceptable code values.

4453	TEXT FUNCTION, CODED	C	an..3	O
	1 Text for subsequent use			
C107	TEXT REFERENCE	C		D
4441	Free text, coded	M	an..3	M
1131	Code list qualifier	C	an..3	O
	Refer to D.96A Data Element Dictionary for acceptable code values.			
3055	Code list responsible agency, coded	C	an..3	R
	Refer to D.96A Data Element Dictionary for acceptable code values.			
C108	TEXT LITERAL	C		D
4440	Free text	M	an..70	M
4440	Free text	C	an..70	O
4440	Free text	C	an..70	O
4440	Free text	C	an..70	O
4440	Free text	C	an..70	O
3453	LANGUAGE, CODED	C	an..3	D
	ISO 639 two alpha code			
	Refer to D.96A Data Element Dictionary for acceptable code values.			

Group: **RFF** Segment Group 1: Reference
Position: 0080
Group:
Level: 1
Usage: Conditional (Optional)
Max Use: 99
Purpose: A group of segments for giving references and where necessary, their dates, relating to the whole message, e.g. contract number, import/export license number, despatch advice number.

Segment Summary

	Pos.	Seg.		Req.	Max.	Group:
	No.	ID	Name	Des.	Use	Repeat
M	0090	RFF	Reference	M	1	
O	0100	DTM	Date/Time/Period	C	5	

Segment: **RFF** Reference
Position: 0090 (Trigger Segment)
Group: SG1
Level: 1
Usage: Mandatory
Max Use: 1

Purpose: A segment identifying the reference by its number and where appropriate a line number within a document.

Notes: This segment is used to specify references which relate to the whole invoice, for example, Purchase Order Numbers, Delivery Numbers, etc.

The message batch number (MBE) is included in this segment. This number is used to provide a link between a batch of invoice messages and a TAXCON message.

If the document type is a credit note the invoice to which it relates may need to be specified. This is done using the 'IV' qualifier for DE 1153.

Example :

RFF+MBE:252'

RFF+ON:ORD9523'

Only for e-ISP (the EDI version of the existing Integrated Supplier Program) the SG1-FTX-Segment, Qualifier "PUR" and DE 4440 are not filled:

RFF+CT:BRANCHNR/WORK-ORDERNR (e.g. BBBB/YBBB-XXXX(space)CCC)

BBBB/ = Branch number "/"
 Y = Year
 BBB = 3 digits branch number "-"
 XXXX = Contract number (space)
 CCC = Cost code

Data Element Summary

Data Element	Component Element	Name	Base Attributes	User Attributes
C506		REFERENCE	M	M
	1153	Reference qualifier	M an..3	M
		Refer to D.96A Data Element Dictionary for acceptable code values.		
	1154	Reference number	C an..35	R
	1156	Line number	C an..6	N
	4000	Reference version number	C an..35	N

Segment: **DTM** Date/Time/Period
Position: 0100
Group: SG1
Level: 2
Usage: Conditional (Optional)
Max Use: 5
Purpose: A segment specifying the date/time related to the reference.

Notes: This segment is used to specify dates relating to the references given in the previous RFF segment.

Example :

DTM+171:19930804:102'

Data Element Summary

Data Element	Component Element Name	Base Attributes	User Attributes
C507	DATE/TIME/PERIOD	M	M
	2005 Date/time/period qualifier	M an..3	M
	171 Reference date/time		
	2380 Date/time/period	C an..35	R
	2379 Date/time/period format qualifier	C an..3	R

Refer to D.96A Data Element Dictionary for acceptable code values.

Group: **NAD** Segment Group 2: Name and Address
Position: 0110
Group:
Level: 1
Usage: Conditional (Optional)
Max Use: 99
Purpose: A group of segments identifying the parties with associated information.

Segment Summary

	Pos. No.	Seg. ID	Name	Req. Des.	Max. Use	Group: Repeat
M	0120	NAD	Name and Address	M	1	
O	0140	FII	Financial Institution Information	C	5	
	0150		Segment Group 3: Reference	C		9999
	0210		Segment Group 5: Contact Information	C		5

Segment: **NAD** Name and Address
Position: 0120 (Trigger Segment)
Group: SG2
Level: 1
Usage: Mandatory
Max Use: 1
Purpose: A segment identifying names and addresses of the parties, in coded or clear form, and their functions relevant to the invoice. Identification of the seller and buyer parties is mandatory for the invoice message. It is recommended that where possible only the coded form of the party ID should be specified e.g. The Buyer and Seller are known to each other, thus only the coded ID is required, but the Consignee or Delivery address may vary and would have to be clearly specified, preferably in structured format.

Notes: The NAD segment is used to identify the trading parties involved in the invoice process. Identification of the buyer and supplier of goods and services is mandatory in the Invoice. Additionally, the issuer of the invoice and the invoicee must be identified if different from the buying and supplying parties. The consignee or delivery party needs to be specified if different to the buyers address.

DE 3039: For identification of parties it is recommended to use EAN location codes.

If coded address information can not be used it is recommended to use a structured address (C080 through 3207).

Example :

NAD+BY+5412345000020::9'

NAD+SU+4012345500000::9'

NAD+SE+04714999968::10'

NAD+DP+5412345000010::9'

NAD+CN+0471499996800::10

Dependency Notes :

The following composites and data elements are only used when a coded name and address can not be used. The affected composites and data elements are as follows:

NAD+SE+04714999968::10+Adient J.C.A.E.:Adient A.E.:18 CHAUSSEE JULES CESAR:95520 OSNY FRANCE+Adient J.C.A.E.++++FR'

C080 - C059 - 3164 - 3229 - 3251 - 3207

Data Element Summary

Data Element	Component Element Name	Base Attributes	User Attributes
3035	PARTY QUALIFIER	M an..3	M

Refer to D.96A Data Element Dictionary for acceptable code values.

C082	PARTY IDENTIFICATION DETAILS	C		A
3039	Party id. identification	M	an..35	M
1131	Code list qualifier	C	an..3	N
3055	Code list responsible agency, coded	C	an..3	R
	9			EAN (International Article Numbering association)
	10			Organization for Data Exchange through Tele-Transmission in Europe (European automotive industry project).
	16			DUNS (Dun & Bradstreet)
	92			Assigned by buyer or buyer's agent
C058	NAME AND ADDRESS	C		N
3124	Name and address line	M	an..35	N
3124	Name and address line	C	an..35	N
3124	Name and address line	C	an..35	N
3124	Name and address line	C	an..35	N
3124	Name and address line	C	an..35	N
C080	PARTY NAME	C		D
3036	Party name	M	an..35	M
	Party Name in clear text.			
3036	Party name	C	an..35	O
3036	Party name	C	an..35	O
3036	Party name	C	an..35	O
3036	Party name	C	an..35	O
3045	Party name format, coded	C	an..3	O
	Refer to D.96A Data Element Dictionary for acceptable code values.			
C059	STREET	C		D
3042	Street and number/p.o. box	M	an..35	M
	Building Name/Number and Street Name			
3042	Street and number/p.o. box	C	an..35	O
	Name and/or P.O. Box.			
3042	Street and number/p.o. box	C	an..35	O
3042	Street and number/p.o. box	C	an..35	O
3164	CITY NAME	C	an..35	D
	City/Town name, clear text			
3229	COUNTRY SUB-ENTITY IDENTIFICATION	C	an..9	D
	County/State in clear text.			
3251	POSTCODE IDENTIFICATION	C	an..9	D
	Postal Code			
3207	COUNTRY, CODED	C	an..3	D
	ISO 3166 two alpha code			
	Refer to D.96A Data Element Dictionary for acceptable code values.			

Segment: **FII** Financial Institution Information
Position: 0140
Group: SG2
Level: 2
Usage: Conditional (Optional), not used
Max Use: 5
Purpose: A segment identifying the financial institution (e.g. bank) and relevant account numbers for the seller, buyer and where necessary other parties.

Notes: This segment is used to identify financial institution information related to the party identified in the NAD Segment.

Example:

FII+RB+994-3277711:NGEISS+KREDBEBB:25:5'

Data Element Summary

Data Element	Component Element Name	Base Attributes	User Attributes
3035	PARTY QUALIFIER	M an..3	M
	Refer to D.96A Data Element Dictionary for acceptable code values.		
C078	ACCOUNT IDENTIFICATION	C	R
	3194 Account holder number	C an..35	R
	3192 Account holder name	C an..35	O
	3192 Account holder name	C an..35	O
	6345 Currency, coded	C an..3	O
	ISO 4217 three alpha code		
	Refer to D.96A Data Element Dictionary for acceptable code values.		
C088	INSTITUTION IDENTIFICATION	C	O
	3433 Institution name identification	C an..11	A
	Refer to D.96A Data Element Dictionary for acceptable code values.		
	1131 Code list qualifier	C an..3	O
	Refer to D.96A Data Element Dictionary for acceptable code values.		
	3055 Code list responsible agency, coded	C an..3	D
	Refer to D.96A Data Element Dictionary for acceptable code values.		
	3434 Institution branch number	C an..17	O
	1131 Code list qualifier	C an..3	O
	Refer to D.96A Data Element Dictionary for acceptable code values.		
	3055 Code list responsible agency, coded	C an..3	D
	Refer to D.96A Data Element Dictionary for acceptable code values.		
	3432 Institution name	C an..70	O
	3436 Institution branch place	C an..70	O
3207	COUNTRY, CODED	C an..3	O
	ISO 3166 two alpha code		
	Refer to D.96A Data Element Dictionary for acceptable code values.		

Group: **RFF** Segment Group 3: Reference
Position: 0150
Group: Segment Group 2 (Name and Address) Conditional (Optional)
Level: 2
Usage: Conditional (Optional)
Max Use: 9999
Purpose: A group of segment for giving references only relevant to the specified party rather than the whole invoice.

Segment Summary

	<u>Pos. No.</u>	<u>Seg. ID</u>	<u>Name</u>	<u>Req. Des.</u>	<u>Max. Use</u>	<u>Group: Repeat</u>
M	0160	RFF	Reference	M	1	

Segment: **RFF** Reference
Position: 0160 (Trigger Segment)
Group: SG2-SG3
Level: 2
Usage: Mandatory
Max Use: 1
Purpose: A segment identifying the reference by its number and where appropriate a line number within a document.
Notes: This segment is used to specify reference numbers related to the trading parties identified in the previous NAD segment.
 Example :
 RFF+VA:VR12345'

Data Element Summary

<u>Data Element</u>	<u>Component Element Name</u>	<u>Base Attributes</u>	<u>User Attributes</u>
C506	REFERENCE	M	M
	1153 Reference qualifier	M an..3	M
	ADE Account number		
	ALV Registered capital reference		
	AP Accounts receivable number		
	API Additional party identification (EAN Code)		
	CR Customer reference number		
	EX Export licence number		
	FC Fiscal number		
	GN Government reference number		
	IA Internal vendor number		
	IP Import licence number		
	IT Internal customer number (Only for e-ISP: Adient customer)		

number by Buyer NAD, if the UNB.DE:0004 is not/not correct with the Adiant supplier number filled)

	PY	Payee's financial institution account number		
	SZ	Specification number		
	TRB	Tribunal place registration number (EAN Code)		
	VA	VAT registration number (Only for e-ISP: required when code "SU" (supplier) is used in NAD.DE:3035)		
	XA	Company/place registration number		
	XB9	Purchase for re-export customs agreement number (EAN Code)		
1154	Reference number		C an..35	R
1156	Line number		C an..6	N
4000	Reference version number		C an..35	N

Group: **CTA** Segment Group 5: Contact Information
Position: 0210
Group: Segment Group 2 (Name and Address) Conditional (Optional)
Level: 2
Usage: Conditional (Optional)
Max Use: 5
Purpose: A group of segments giving contact details of the specific person or department within the party identified in the NAD segment.

Segment Summary

	<u>Pos. No.</u>	<u>Seg. ID</u>	<u>Name</u>	<u>Req. Des.</u>	<u>Max. Use</u>	<u>Group: Repeat</u>
M	0220	CTA	Contact Information	M	1	
O	0230	COM	Communication Contact	C	5	

Segment: **CTA** Contact Information
Position: 0220 (Trigger Segment)
Group: SG2-SG5
Level: 2
Usage: Mandatory
Max Use: 1
Purpose: A segment to identify a person or department, and their function, to whom communications should be directed.
Notes: This segment is used to identify the department and person within the company specified in the NAD. The EAN location code is particularly suitable for this purpose.
 Example:
 CTA+AD+:MARKCARTER'

Data Element Summary

<u>Data Element</u>	<u>Component Element</u>	<u>Name</u>	<u>Base Attributes</u>	<u>User Attributes</u>
3139		CONTACT FUNCTION, CODED	C an..3	R
		Refer to D.96A Data Element Dictionary for acceptable code values.		
C056		DEPARTMENT OR EMPLOYEE DETAILS	C	O
	3413	Department or employee identification	C an..17	O
	3412	Department or employee	C an..35	O

Segment: COM Communication Contact

Position: 0230
Group: SG2-SG5
Level: 3
Usage: Conditional (Optional)
Max Use: 5

Purpose: A segment to identify a communications type and number for the contact specified in the CTA segment.

Notes: Segment to identify the communications number and the type of communications used for the person identified in the CTA segment.

Example :

COM+00448132445322:TE'

Data Element Summary

<u>Data Element</u>	<u>Component Element</u>	<u>Name</u>	<u>Base Attributes</u>	<u>User Attributes</u>
C076		COMMUNICATION CONTACT	M	M
	3148	Communication number	M an..512	M
	3155	Communication channel qualifier	M an..3	M
		Refer to D.96A Data Element Dictionary for acceptable code values.		

Group: TAX Segment Group 6: Duty/Tax/Fee Details

Position: 0240
Group:
Level: 1
Usage: Conditional (Optional)
Max Use: 5

Purpose: A group of segments specifying tax related information, and when necessary, the location(s) to which that tax information relates.

Segment Summary

	<u>Pos. No.</u>	<u>Seg. ID</u>	<u>Name</u>	<u>Req. Des.</u>	<u>Max. Use</u>	<u>Group: Repeat</u>
M	0250	TAX	Duty/Tax/Fee Details	M	1	
O	0260	MOA	Monetary Amount	C	1	

Segment: **TAX** Duty/Tax/Fee Details

Position: 0250 (Trigger Segment)

Group: SG6

Level: 1

Usage: Mandatory

Max Use: 1

Purpose: A segment specifying a tax type, category and rate or exemption, relating to the whole invoice e.g. Value Added Tax at the standard rate is applicable for all items.

Notes: This segment is used to indicate the type, category, and rate of tax for the complete invoice.

Example :

TAX+7+VAT+++:::16+S'

Dependency Notes :

DE C241 and 5305: Tax types and categories will vary from country to country. They should be defined by national guidelines.

Data Element Summary

<u>Data Element</u>	<u>Component Element Name</u>	<u>Base Attributes</u>	<u>User Attributes</u>
5283	DUTY/TAX/FEE FUNCTION QUALIFIER	M an..3	M
	Refer to D.96A Data Element Dictionary for acceptable code values.		
C241	DUTY/TAX/FEE TYPE	C	D
	5153 Duty/tax/fee type, coded	C an..3	O
	Refer to D.96A Data Element Dictionary for acceptable code values.		
	1131 Code list qualifier	C an..3	O
	Refer to D.96A Data Element Dictionary for acceptable code values.		
	3055 Code list responsible agency, coded	C an..3	D
	Refer to D.96A Data Element Dictionary for acceptable code values.		
	5152 Duty/tax/fee type	C an..35	O
C533	DUTY/TAX/FEE ACCOUNT DETAIL	C	O
	5289 Duty/tax/fee account identification	M an..6	M
	1131 Code list qualifier	C an..3	O
	Refer to D.96A Data Element Dictionary for acceptable code values.		
	3055 Code list responsible agency, coded	C an..3	D
	Refer to D.96A Data Element Dictionary for acceptable code values.		
5286	DUTY/TAX/FEE ASSESSMENT BASIS	C an..15	O

C243	DUTY/TAX/FEE DETAIL	C	an..7	A
5279	Duty/tax/fee rate identification	C	an..7	O
1131	Code list qualifier	C	an..3	O
	Refer to D.96A Data Element Dictionary for acceptable code values.			
3055	Code list responsible agency, coded	C	an..3	D
	Refer to D.96A Data Element Dictionary for acceptable code values.			
5278	Duty/tax/fee rate	C	an..17	R
	The actual rate of tax/duty.			
5273	Duty/tax/fee rate basis identification	C	an..12	O
	Refer to D.96A Data Element Dictionary for acceptable code values.			
1131	Code list qualifier	C	an..3	O
	Refer to D.96A Data Element Dictionary for acceptable code values.			
3055	Code list responsible agency, coded	C	an..3	D
	Refer to D.96A Data Element Dictionary for acceptable code values.			
5305	DUTY/TAX/FEE CATEGORY, CODED	C	an..3	D
	Refer to D.96A Data Element Dictionary for acceptable code values.			
3446	PARTY TAX IDENTIFICATION NUMBER	C	an..20	O

Segment: **MOA** Monetary Amount
Position: 0260
Group: SG6
Level: 2
Usage: Conditional (Optional)
Max Use: 1

Purpose: A segment specifying the amount for the identified tax/fee.
Notes: This segment is to be used to provide tax related monetary amounts relevant to the complete invoice. These amounts should be added to any amounts specified in the detail section in order to calculate the total invoice tax amounts contained in the summary section.

Example:

MOA+124:154.54'

Data Element Summary

<u>Data Element</u>	<u>Component Element Name</u>	<u>Base Attributes</u>	<u>User Attributes</u>
C516	MONETARY AMOUNT	M	M
	5025 Monetary amount type qualifier	M an..3	M
	Refer to D.96A Data Element Dictionary for acceptable code values.		
	5004 Monetary amount	C n..18	R
	6345 Currency, coded	C an..3	N
	ISO 4217 three alpha code		
	6343 Currency qualifier	C an..3	N
	4405 Status, coded	C an..3	N

Group: **CUX** Segment Group 7: Currencies
Position: 0280
Group:
Level: 1
Usage: Conditional (Optional)
Max Use: 5
Purpose: A group of segments specifying the currencies and related dates/periods valid for the whole invoice. Currency data maybe omitted in national applications but will be required for international transactions.

Segment Summary

	<u>Pos. No.</u>	<u>Seg. ID</u>	<u>Name</u>	<u>Req. Des.</u>	<u>Max. Use</u>	<u>Group: Repeat</u>
M	0290	CUX	Currencies	M	1	
O	0300	DTM	Date/Time/Period	C	5	

Segment: **CUX** Currencies
Position: 0290 (Trigger Segment)
Group: SG7
Level: 1
Usage: Mandatory
Max Use: 1
Purpose: A segment identifying the currencies required in the invoice e.g. the invoice currency. A rate of exchange may be given to convert a reference currency into a target currency.

Notes: The CUX Segment may be omitted for national exchanges.
 The CUX Segment is mandatory for international exchanges.
 This segment is used to specify the currencies for international invoicing.
 When specifying Reference and Target Currencies for international trade, one occurrence of CUX is all that is required. The reference currency is identified in the first occurrence of composite C504, with the target currency specified in the second occurrence of C504. The rate of exchange between the two is detailed in DE 5402.
 The general rule for calculating the rate of exchange is as follows :
 Reference Currency multiplied by Rate = Target Currency.
 Example :
 1. Where only the invoicing currency needs to be identified for national trade.
 CUX+2:EUR:4'
 2. For international trade, the invoicing currency is identified as Pounds Sterling but the payment currency is to be in Belgian Francs. The rate of exchange between the two is 48.50 Belgian Francs to 1 Pound Sterling.

CUX+2:EUR:4+3:USD:11+1.3248'

Dependency Notes :

C504: The second occurrence of this composite is only used is a target currency is being specified.

5402: The rate of exchange is only used is a target currency has been identified in the second occurrence of C504

Data Element Summary

<u>Data Element</u>	<u>Component Element Name</u>	<u>Base Attributes</u>	<u>User Attributes</u>
C504	CURRENCY DETAILS	C	R
	6347 Currency details qualifier	M an..3	M
	2 Reference currency		
	6345 Currency, coded	C an..3	R
	ISO 4217 three alpha		
	Refer to D.96A Data Element Dictionary for acceptable code values.		
	6343 Currency qualifier	C an..3	R
	4 Invoicing currency		
	10 Pricing currency		
	11 Payment currency		
	6348 Currency rate base	C n..4	N
C504	CURRENCY DETAILS	C	D
	6347 Currency details qualifier	M an..3	M
	3 Target currency		
	6345 Currency, coded	C an..3	R
	ISO 4217 three alpha		
	Refer to D.96A Data Element Dictionary for acceptable code values.		
	6343 Currency qualifier	C an..3	R
	4 Invoicing currency		
	10 Pricing currency		
	11 Payment currency		
	6348 Currency rate base	C n..4	O
5402	RATE OF EXCHANGE	C n..12	D
	The rate of exchange which applies to the currency.		
6341	CURRENCY MARKET EXCHANGE, CODED	C an..3	O
	Refer to D.96A Data Element Dictionary for acceptable code values.		

Segment: **DTM** Date/Time/Period
Position: 0300
Group: SG7
Level: 2
Usage: Conditional (Optional)
Max Use: 5
Purpose: A segment specifying the date/time/period related to the rate of exchange.

Notes: This segment is used to specify the date on which a rate of exchange was quoted.

Example :

DTM+134:19931010:102'

Data Element Summary

Data Element	Component Element Name	Base Attributes	User Attributes
C507	DATE/TIME/PERIOD	M	M
	2005 Date/time/period qualifier	M an..3	M
	134 Rate of exchange date/time		
	140		
	2380 Date/time/period	C an..35	R
	2379 Date/time/period format qualifier	C an..3	R

Refer to D.96A Data Element Dictionary for acceptable code values.

Group: **PAT** Segment Group 8: Payment Terms Basis
Position: 0310
Group:
Level: 1
Usage: Conditional (Optional)
Max Use: 10
Purpose: A group of segments specifying the terms of payment applicable for the whole invoice.

Segment Summary

	Pos. No.	Seg. ID	Name	Req. Des.	Max. Use	Group: Repeat
M	0320	PAT	Payment Terms Basis	M	1	
O	0330	DTM	Date/Time/Period	C	5	
O	0340	PCD	Percentage Details	C	1	
O	0350	MOA	Monetary Amount	C	1	
O	0360	PAI	Payment Instructions	C	1	
O	0370	FII	Financial Institution Information	C	1	

Segment: **PAT** Payment Terms Basis
Position: 0320 (Trigger Segment)
Group: SG8
Level: 1
Usage: Mandatory
Max Use: 1
Purpose: A segment identifying the payment terms and date/time basis.
Notes: This segment is used by the issuer of the invoice to specify the payment terms for the complete invoice.

Example :

The following example indicates basic payment terms with payment due 30 days after the reference date which is the invoice date.

PAT+1++5:3:D:30'

Data Element Summary

Data Element	Component Element Name	Base Attributes	User Attributes
4279	PAYMENT TERMS TYPE QUALIFIER	M an..3	M
	Refer to D.96A Data Element Dictionary for acceptable code values.		
C110	PAYMENT TERMS	C	O
4277	Terms of payment identification	M an..17	M
	Refer to D.96A Data Element Dictionary for acceptable code values.		
1131	Code list qualifier	C an..3	O
	Refer to D.96A Data Element Dictionary for acceptable code values.		
3055	Code list responsible agency, coded	C an..3	O
	Refer to D.96A Data Element Dictionary for acceptable code values.		
4276	Terms of payment	C an..35	O
4276	Terms of payment	C an..35	O
C112	TERMS/TIME INFORMATION	C	O
2475	Payment time reference, coded	M an..3	M
	Refer to D.96A Data Element Dictionary for acceptable code values.		
2009	Time relation, coded	C an..3	O
	Refer to D.96A Data Element Dictionary for acceptable code values.		
2151	Type of period, coded	C an..3	O
	Refer to D.96A Data Element Dictionary for acceptable code values.		
2152	Number of periods	C n..3	O
	Number of periods for payment.		

Segment: **DTM** Date/Time/Period
Position: 0330
Group: SG8
Level: 2
Usage: Conditional (Optional)
Max Use: 5
Purpose: A segment giving the specific date/time/period, if needed, of any payments, discounts, instalments etc.
Notes: This segment is used to specify any dates associated with the payment of the invoice.
 Example :
 Net due date for payment the 31st August 1993.
 DTM+13:19930831:102'

Data Element Summary

Data Element	Component Element Name	Base Attributes	User Attributes
C507	DATE/TIME/PERIOD	M	M
	2005 Date/time/period qualifier	M an..3	M
	Refer to D.96A Data Element Dictionary for acceptable code values.		
	2380 Date/time/period	C an..35	R
	2379 Date/time/period format qualifier	C an..3	R
	Refer to D.96A Data Element Dictionary for acceptable code values.		

Segment: **PCD** Percentage Details
Position: 0340
Group: SG8
Level: 2
Usage: Conditional (Optional)
Max Use: 1
Purpose: A segment specifying the discount, interest, penalty as well as instalment percentage.
Notes: This segment is used to specify percentages which will be allowed or charged if the invoicee pays (does not pay) to terms.
 Example :
 PCD+15:2.5:13'

Data Element Summary

Data Element	Component Element Name	Base Attributes	User Attributes
C501	PERCENTAGE DETAILS	M	M
	5245 Percentage qualifier	M an..3	M

Refer to D.96A Data Element Dictionary for acceptable code values.

5482	Percentage	C	n..10	R
5249	Percentage basis, coded	C	an..3	O

Refer to D.96A Data Element Dictionary for acceptable code values.

1131	Code list qualifier	C	an..3	N
3055	Code list responsible agency, coded	C	an..3	D

Refer to D.96A Data Element Dictionary for acceptable code values.

Segment: MOA Monetary Amount

Position: 0350
Group: SG8
Level: 2
Usage: Conditional (Optional)
Max Use: 1

Purpose: A segment specifying amounts related to payment discount penalties or instalments.

Notes: This segment is used to specify monetary values which will be allowed or charged if the invoicee pays (does not pay) to terms.

Example :

MOA+21:100'

Data Element Summary

<u>Data Element</u>	<u>Component Element</u>	<u>Name</u>	<u>Base Attributes</u>	<u>User Attributes</u>
C516		MONETARY AMOUNT	M	M
	5025	Monetary amount type qualifier	M an..3	M
		Refer to D.96A Data Element Dictionary for acceptable code values.		
	5004	Monetary amount	C n..18	R
		Actual value being charged/discounted.		
	6345	Currency, coded	C an..3	N
		ISO 4217 three alpha code		
	6343	Currency qualifier	C an..3	N
	4405	Status, coded	C an..3	N

Segment: **PAI** Payment Instructions
Position: 0360
Group: SG8
Level: 2
Usage: Conditional (Optional)
Max Use: 1
Purpose: To specify the instructions for payment.
Notes: Segment Notes:

This segment is used to specify payment instructions related to payment terms.

Example:

The following example indicates that payment has to be made to a bank account.
 PAI+::42'

Data Element Summary

<u>Data Element</u>	<u>Component Element Name</u>	<u>Base Attributes</u>	<u>User Attributes</u>
C534	PAYMENT INSTRUCTION DETAILS	M	M
4439	Payment conditions, coded Refer to D.96A Data Element Dictionary for acceptable code values.	C an..3	O
4431	Payment guarantee, coded Refer to D.96A Data Element Dictionary for acceptable code values.	C an..3	O
4461	Payment means, coded Refer to D.96A Data Element Dictionary for acceptable code values.	C an..3	O
1131	Code list qualifier Refer to D.96A Data Element Dictionary for acceptable code values.	C an..3	O
3055	Code list responsible agency, coded Refer to D.96A Data Element Dictionary for acceptable code values.	C an..3	D
4435	Payment channel, coded Refer to D.96A Data Element Dictionary for acceptable code values.	C an..3	O

Segment: **FII** Financial Institution Information
Position: 0370
Group: SG8
Level: 2
Usage: Conditional (Optional), not used
Max Use: 1
Purpose: To identify an account and a related financial institution.

Notes: Segment Notes:

This segment is used to identify the receiving financial institution and account holder number, related to the payment means.

Example:

FII+RB+994-3277711+KREDBEBB:25:5'

Data Element Summary

<u>Data Element</u>	<u>Component Element Name</u>	<u>Base Attributes</u>	<u>User Attributes</u>
3035	PARTY QUALIFIER RB Receiving financial institution	M an..3	M
C078	ACCOUNT IDENTIFICATION	C	R
3194	Account holder number	C an..35	R
3192	Account holder name	C an..35	O
3192	Account holder name	C an..35	O
6345	Currency, coded ISO 4217 three alpha code	C an..3	O
	Refer to D.96A Data Element Dictionary for acceptable code values.		
C088	INSTITUTION IDENTIFICATION	C	O
3433	Institution name identification	C an..11	R
	Refer to D.96A Data Element Dictionary for acceptable code values.		
1131	Code list qualifier	C an..3	O
	Refer to D.96A Data Element Dictionary for acceptable code values.		
3055	Code list responsible agency, coded	C an..3	O
	Refer to D.96A Data Element Dictionary for acceptable code values.		
3434	Institution branch number	C an..17	O
1131	Code list qualifier	C an..3	O
	Refer to D.96A Data Element Dictionary for acceptable code values.		
3055	Code list responsible agency, coded	C an..3	D
	Refer to D.96A Data Element Dictionary for acceptable code values.		
3432	Institution name	C an..70	O
3436	Institution branch place	C an..70	O
3207	COUNTRY, CODED	C an..3	O
	Refer to D.96A Data Element Dictionary for acceptable code values.		

Group: **TDT** Segment Group 9: Details of Transport
Position: 0380
Group:
Level: 1
Usage: Conditional (Optional)
Max Use: 10
Purpose: A group of segments identifying the mode and means of transport, location and relevant dates and times for transportation, relating to the whole invoice.

Segment Summary

	<u>Pos. No.</u>	<u>Seg. ID</u>	<u>Name</u>	<u>Req. Des.</u>	<u>Max. Use</u>	<u>Group: Repeat</u>
M	0390	TDT	Details of Transport	M	1	
	0400		Segment Group 10: Place/Location Identification	C		10

Segment: **TDT** Details of Transport
Position: 0390 (Trigger Segment)
Group: SG9
Level: 1
Usage: Mandatory
Max Use: 1
Purpose: A segment specifying the mode, means and identification of the transport for the goods being invoiced.

Notes: The TDT segment can be used to specify transport services provided for the delivery of the invoiced line items, such as express transport services.

Example :

TDT+20++30+31'

Dependency Notes :

Data Elements 8179 and 8178 are only used when the type of transport must be specifically identified, i.e. where a generic description such as road transport is unsuitable.

Data Element Summary

<u>Data Element</u>	<u>Component Element Name</u>	<u>Base Attributes</u>	<u>User Attributes</u>
8051	TRANSPORT STAGE QUALIFIER	M an..3	M
	Refer to D.96A Data Element Dictionary for acceptable code values.		
8028	CONVEYANCE REFERENCE NUMBER	C an..17	O
	Reference number covering the transport.		
C220	MODE OF TRANSPORT	C	A
	8067 Mode of transport, coded	C an..3	R

		Refer to D.96A Data Element Dictionary for acceptable code values.		
C228	8066	Mode of transport	C an..17	N
		TRANSPORT MEANS	C	O
	8179	Type of means of transport identification	C an..8	D
		Refer to D.96A Data Element Dictionary for acceptable code values.		
C040	8178	Type of means of transport	C an..17	D
		CARRIER	C	O
	3127	Carrier identification	C an..17	A
		EAN Location Code - Format 13n		
	1131	Code list qualifier	C an..3	O
		Refer to D.96A Data Element Dictionary for acceptable code values.		
	3055	Code list responsible agency, coded	C an..3	A
		9 EAN (International Article Numbering association)		
8101	3128	Carrier name	C an..35	O
		TRANSIT DIRECTION, CODED	C an..3	O
		Refer to D.96A Data Element Dictionary for acceptable code values.		
C401		EXCESS TRANSPORTATION INFORMATION	C	N
	8457	Excess transportation reason, coded	M an..3	N
	8459	Excess transportation responsibility, coded	M an..3	N
	7130	Customer authorization number	C an..17	N
C222		TRANSPORT IDENTIFICATION	C	O
	8213	Id. of means of transport identification	C an..9	O
	1131	Code list qualifier	C an..3	O
		Refer to D.96A Data Element Dictionary for acceptable code values.		
	3055	Code list responsible agency, coded	C an..3	O
		Refer to D.96A Data Element Dictionary for acceptable code values.		
	8212	Id. of the means of transport	C an..35	R
		Vehicle licence plate/Aircraft number		
	8453	Nationality of means of transport, coded	C an..3	O
		ISO 3166 two alpha code		
		Refer to D.96A Data Element Dictionary for acceptable code values.		
8281		TRANSPORT OWNERSHIP, CODED	C an..3	N

Group: **LOC** Segment Group 10: Place/Location Identification
Position: 0400
Group: Segment Group 9 (Details of Transport) Conditional (Optional)
Level: 2
Usage: Conditional (Optional)
Max Use: 10
Purpose: A group of segments giving the location and date/time information relative to the transportation.

Segment Summary

	<u>Pos. No.</u>	<u>Seg. ID</u>	<u>Name</u>	<u>Req. Des.</u>	<u>Max. Use</u>	<u>Group: Repeat</u>
M	0410	LOC	Place/Location Identification	M	1	
O	0420	DTM	Date/Time/Period	C	5	

Segment: **LOC** Place/Location Identification
Position: 0410 (Trigger Segment)
Group: SG9-SG10
Level: 2
Usage: Mandatory
Max Use: 1
Purpose: A segment identifying locations relevant to the transport specified in the TDT segment e.g. place of departure or border crossing point.
Notes: Segment Notes:

This segment is used to identify locations related to the details of transport.

Example:
 LOC+5+5412345678908::9'

Data Element Summary

<u>Data Element</u>	<u>Component Element</u>	<u>Name</u>	<u>Base Attributes</u>	<u>User Attributes</u>
3227		PLACE/LOCATION QUALIFIER	M an..3	M
		Refer to D.96A Data Element Dictionary for acceptable code values.		
C517		LOCATION IDENTIFICATION	C	A
	3225	Place/location identification	C an..25	A
		ISO 3166 two alpha code		
	1131	Code list qualifier	C an..3	O
		Refer to D.96A Data Element Dictionary for acceptable code values.		
	3055	Code list responsible agency, coded	C an..3	D
		Refer to D.96A Data Element Dictionary for acceptable code values.		
	3224	Place/location	C an..70	O
C519		RELATED LOCATION ONE IDENTIFICATION	C	O

	3223	Related place/location one identification	C	an..25	O
	1131	Code list qualifier	C	an..3	O
		Refer to D.96A Data Element Dictionary for acceptable code values.			
	3055	Code list responsible agency, coded	C	an..3	D
		Refer to D.96A Data Element Dictionary for acceptable code values.			
C553	3222	Related place/location one	C	an..70	O
		RELATED LOCATION TWO IDENTIFICATION	C		O
	3233	Related place/location two identification	C	an..25	O
	1131	Code list qualifier	C	an..3	O
		Refer to D.96A Data Element Dictionary for acceptable code values.			
	3055	Code list responsible agency, coded	C	an..3	O
		Refer to D.96A Data Element Dictionary for acceptable code values.			
5479	3232	Related place/location two	C	an..70	O
		RELATION, CODED	C	an..3	N

Segment: **DTM** Date/Time/Period

Position: 0420

Group: SG9-SG10

Level: 3

Usage: Conditional (Optional)

Max Use: 5

Purpose: A segment identifying the date/time details of departure and/or arrival of the transported goods for the specified location.

Notes: Segment Notes:

This segment is used to specify dates related to the above location.

Example:

DTM+132:20010606:102'

Data Element Summary

<u>Data Element</u>	<u>Component Element Name</u>	<u>Base Attributes</u>	<u>User Attributes</u>
C507	DATE/TIME/PERIOD	M	M
	2005 Date/time/period qualifier	M an..3	M
	Refer to D.96A Data Element Dictionary for acceptable code values.		
	2380 Date/time/period	C an..35	R
	2379 Date/time/period format qualifier	C an..3	R
	Refer to D.96A Data Element Dictionary for acceptable code values.		

Group: **TOD** Segment Group 12: Terms of Delivery or Transport
Position: 0460
Group:
Level: 1
Usage: Conditional (Optional)
Max Use: 5
Purpose: A group of segments indicating the terms of delivery for the whole invoice.

Segment Summary

	<u>Pos. No.</u>	<u>Seg. ID</u>	<u>Name</u>	<u>Req. Des.</u>	<u>Max. Use</u>	<u>Group: Repeat</u>
M	0470	TOD	Terms of Delivery or Transport	M	1	
O	0480	LOC	Place/Location Identification	C	2	

Segment: **TOD** Terms of Delivery or Transport
Position: 0470 (Trigger Segment)
Group: SG12
Level: 1
Usage: Mandatory
Max Use: 1
Purpose: A segment identifying the delivery terms used e.g. INCOTERMS, code could be used to specify the delivery terms.

Notes: The terms of delivery for the complete invoice are specified here.

Example :

TOD+3++CIF'

Dependency Notes :

Data elements 1131 and 3055 are only used if specific terms of delivery codes, which are outside those recommended by EDIFACT, are being used.

Data Element Summary

<u>Data Element</u>	<u>Component Element Name</u>	<u>Base Attributes</u>	<u>User Attributes</u>
4055	TERMS OF DELIVERY OR TRANSPORT FUNCTION, CODED Refer to D.96A Data Element Dictionary for acceptable code values.	C an..3	A
4215	TRANSPORT CHARGES METHOD OF PAYMENT, CODED Refer to D.96A Data Element Dictionary for acceptable code values.	C an..3	O
C100	TERMS OF DELIVERY OR TRANSPORT	C	A
	4053 Terms of delivery or transport, coded Refer to D.96A Data Element Dictionary for acceptable code values.	C an..3	R
	1131 Code list qualifier Refer to D.96A Data Element Dictionary for acceptable code values.	C an..3	D

3055	Code list responsible agency, coded	C	an..3	D
	Refer to D.96A Data Element Dictionary for acceptable code values.			
4052	Terms of delivery or transport	C	an..70	O
4052	Terms of delivery or transport	C	an..70	O

Segment: LOC Place/Location Identification

Position: 0480
Group: SG12
Level: 2
Usage: Conditional (Optional)
Max Use: 2

Purpose: A segment identifying locations relevant to the delivery terms specified in the TOD segment.

Notes: This segment is used to identify the location where the terms of delivery apply.

Example :

LOC+1+ARBUE::6'

Data Element Summary

<u>Data Element</u>	<u>Component Element Name</u>	<u>Base Attributes</u>	<u>User Attributes</u>
3227	PLACE/LOCATION QUALIFIER	M an..3	M
	Refer to D.96A Data Element Dictionary for acceptable code values.		
C517	LOCATION IDENTIFICATION	C	A
	3225 Place/location identification	C an..25	A
	UN/LOCODE		
	1131 Code list qualifier	C an..3	O
	Refer to D.96A Data Element Dictionary for acceptable code values.		
	3055 Code list responsible agency, coded	C an..3	D
	Refer to D.96A Data Element Dictionary for acceptable code values.		
	3224 Place/location	C an..70	O
C519	RELATED LOCATION ONE IDENTIFICATION	C	O
	3223 Related place/location one identification	C an..25	O
	1131 Code list qualifier	C an..3	O
	Refer to D.96A Data Element Dictionary for acceptable code values.		
	3055 Code list responsible agency, coded	C an..3	D
	Refer to D.96A Data Element Dictionary for acceptable code values.		
	3222 Related place/location one	C an..70	O
C553	RELATED LOCATION TWO IDENTIFICATION	C	N
	3233 Related place/location two identification	C an..25	N
	1131 Code list qualifier	C an..3	N
	3055 Code list responsible agency, coded	C an..3	N
	3232 Related place/location two	C an..70	N
5479	RELATION, CODED	C an..3	N

Group: **PAC** Segment Group 13: Package
Position: 0490
Group:
Level: 1
Usage: Conditional (Optional)
Max Use: 1000
Purpose: A group of segments identifying the packaging, physical dimensions and marks and numbers for goods referenced by the whole invoice.

Segment Summary

	<u>Pos. No.</u>	<u>Seg. ID</u>	<u>Name</u>	<u>Req. Des.</u>	<u>Max. Use</u>	<u>Group: Repeat</u>
M	0500	PAC	Package	M	1	

Segment: **PAC** Package
Position: 0500 (Trigger Segment)
Group: SG13
Level: 1
Usage: Mandatory
Max Use: 1
Purpose: A segment specifying the number and type of packages for the whole invoice, e.g. number and type of pallets.
Notes: This segment is used to enable the invoice message to be used as valued despatch advice message by detailing the total count of each package type being invoiced.
 Example:
 PAC+6++CR'
 The invoice relates to 6 crates.
 Dependency notes:
 Composite C532 is only used where the packaging being described is returnable. This composite identifies who is responsible for payment of its return.

Data Element Summary

<u>Data Element</u>	<u>Component Element Name</u>	<u>Base Attributes</u>	<u>User Attributes</u>
7224	NUMBER OF PACKAGES	C n..8	O
C531	PACKAGING DETAILS	C	O
	7075 Packaging level, coded	C an..3	O
	Refer to D.96A Data Element Dictionary for acceptable code values.		
	7233 Packaging related information, coded	C an..3	O
	Refer to D.96A Data Element Dictionary for acceptable code values.		

	7073	Packaging terms and conditions, coded	C	an..3	O
		Refer to D.96A Data Element Dictionary for acceptable code values.			
C202		PACKAGE TYPE	C		R
	7065	Type of packages identification	C	an..17	A
		Refer to D.96A Data Element Dictionary for acceptable code values.			
	1131	Code list qualifier	C	an..3	O
		Refer to D.96A Data Element Dictionary for acceptable code values.			
	3055	Code list responsible agency, coded	C	an..3	D
		Refer to D.96A Data Element Dictionary for acceptable code values.			
C402	7064	Type of packages	C	an..35	O
		PACKAGE TYPE IDENTIFICATION	C		N
	7077	Item description type, coded	M	an..3	N
	7064	Type of packages	M	an..35	N
	7143	Item number type, coded	C	an..3	N
	7064	Type of packages	C	an..35	N
	7143	Item number type, coded	C	an..3	N
C532		RETURNABLE PACKAGE DETAILS	C		D
	8395	Returnable package freight payment responsibility, coded	C	an..3	O
		Refer to D.96A Data Element Dictionary for acceptable code values.			
	8393	Returnable package load contents, coded	C	an..3	N

Group: **ALC** Segment Group 15: Allowance or Charge
Position: 0570
Group:
Level: 1
Usage: Conditional (Optional)
Max Use: 9999

Purpose: A group of segments specifying allowances and charges for the whole invoice. The allowance or charge specified within this Segment group may either relate to the total invoice in which case it cannot be overridden at detail level, or it can relate to the line items as a default allowance/charge and can be overridden by the ALC Segment group within the detail section. Where relevant, additional information, tax and alternate currency details are to be indicated in the TAX and MOA segments.
 The basis for the calculation of the allowance/charge may be a quantity, a percentage, an amount or a rate and one of the Segment group 15-19 should be used accordingly.

Segment Summary

	Pos. No.	Seg. ID	Name	Req. Des.	Max. Use	Group: Repeat
M	0580	ALC	Allowance or Charge	M	1	
	0630		Segment Group 17: Quantity	C		1
	0660		Segment Group 18: Percentage Details	C		1

0690	Segment Group 19: Monetary Amount	C	2
0720	Segment Group 20: Rate Details	C	1
0750	Segment Group 21: Duty/Tax/Fee Details	C	5

Segment: **ALC** Allowance or Charge

Position: 0580 (Trigger Segment)

Group: SG15

Level: 1

Usage: Mandatory

Max Use: 1

Purpose: A segment identifying the charge or allowance and, where necessary, its calculation sequence.

Notes: This segment is used to indicate any Allowances or Charges with reference to the total invoice, e.g. packaging costs.

Any allowances or charges specified in the detail section do not override or replace allowances or charges specified at header level.

DE 1227: The calculation sequence indicator is used when multiple allowances and/or charges are applicable. If various allowances and/or charges percentages, quantities, monetary amounts, or, rates are applicable to the same base price, then the calculation sequence indicator will always equal one. If the various allowances and/or charges are applied against a fluctuating price (constantly changing because of the application of other allowances and/or charges) then the sequence of calculation is indicated using this data element. Example :

ALC+C++6++FC'

Freight charges to be paid by the customer.

Dependency Notes :

DE 4471: This data element is only used if the value in DE 5463 is 'C', charge.

DE 1227: If the allowance or charge is not to be applied against a fixed price then the calculation sequence indicator must be included.

DE C214: This composite is only included if the buyer knows the type of allowance or charge and is agreed between trading partners in their interchange agreement.

Data Element Summary

<u>Data Element</u>	<u>Component Element Name</u>	<u>Base Attributes</u>	<u>User Attributes</u>
5463	ALLOWANCE OR CHARGE QUALIFIER	M an..3	M
	Refer to D.96A Data Element Dictionary for acceptable code values.		
C552	ALLOWANCE/CHARGE INFORMATION	C	O
	1230 Allowance or charge number	C an..35	D

	5189	Charge/allowance description, coded	C	an..3	O
		Refer to D.96A Data Element Dictionary for acceptable code values.			
4471		SETTLEMENT, CODED	C	an..3	O
		Refer to D.96A Data Element Dictionary for acceptable code values.			
1227		CALCULATION SEQUENCE INDICATOR, CODED	C	an..3	D
		Refer to D.96A Data Element Dictionary for acceptable code values.			
C214		SPECIAL SERVICES IDENTIFICATION	C		D
	7161	Special services, coded	C	an..3	A
		Refer to D.96A Data Element Dictionary for acceptable code values.			
	1131	Code list qualifier	C	an..3	O
		Refer to D.96A Data Element Dictionary for acceptable code values.			
	3055	Code list responsible agency, coded	C	an..3	D
		Refer to D.96A Data Element Dictionary for acceptable code values.			
	7160	Special service	C	an..35	O
	7160	Special service	C	an..35	O

Group: **QTY** Segment Group 17: Quantity
Position: 0630
Group: Segment Group 15 (Allowance or Charge) Conditional (Optional)
Level: 2
Usage: Conditional (Optional)
Max Use: 1
Purpose: A group of segments specifying the quantity of the allowance or charge with its measure unit specifier. A range to which the allowance or charge applies may be specified e.g. An allowance of a free quantity of 20 pieces may be specified if the goods quantity ordered is greater than 1000 pieces.

Segment Summary

	Pos.	Seg.		Req.	Max.	Group:
	No.	ID	Name	Des.	Use	Repeat
M	0640	QTY	Quantity	M	1	

Segment: **QTY** Quantity
Position: 0640 (Trigger Segment)
Group: SG15-SG17
Level: 2
Usage: Mandatory
Max Use: 1
Purpose: A segment identifying the type of quantity and the quantity related to the allowance or charge.
Notes: This segment is used to specify any quantity discounts or charges for the current

ALC segment group.

Example :

QTY+12:152'

Dependency Notes :

DE 6411 is only used if a variable quantity product or service is being indicated in the allowance or charge.

Data Element Summary

<u>Data Element</u>	<u>Component Element Name</u>	<u>Base Attributes</u>	<u>User Attributes</u>
C186	QUANTITY DETAILS	M	M
6063	Quantity qualifier Refer to D.96A Data Element Dictionary for acceptable code values.	M an..3	M
6060	Quantity Actual quantity being allowed or charged.	M n..15	M
6411	Measure unit qualifier Refer to D.96A Data Element Dictionary for acceptable code values.	C an..3	D

Group: **PCD Segment Group 18: Percentage Details**
Position: 0660
Group: Segment Group 15 (Allowance or Charge) Conditional (Optional)
Level: 2
Usage: Conditional (Optional)
Max Use: 1
Purpose: A group of segments specifying the percentage for the allowance or charge, e.g. The allowance/charge amount is calculated as 5% of the goods value or a price reduction of 5% may be specified if the goods quantity ordered is within the range 5 tons to 10 tons.

Segment Summary

	<u>Pos. No.</u>	<u>Seg. ID</u>	<u>Name</u>	<u>Req. Des.</u>	<u>Max. Use</u>	<u>Group: Repeat</u>
M	0670	PCD	Percentage Details	M	1	

Segment: **PCD** Percentage Details
Position: 0670 (Trigger Segment)
Group: SG15-SG18
Level: 2
Usage: Mandatory
Max Use: 1
Purpose: A segment identifying the percentage and the percentage basis for the calculation of the allowance or charge.
Notes: This segment is used to specify any percentage discounts or charges for the current ALC segment group.
 Example :
 PCD+1:1.45:13'

Data Element Summary

Data Element	Component Element Name	Base Attributes	User Attributes
C501	PERCENTAGE DETAILS	M	M
5245	Percentage qualifier Refer to D.96A Data Element Dictionary for acceptable code values.	M an..3	M
5482	Percentage	C n..10	R
5249	Percentage basis, coded Refer to D.96A Data Element Dictionary for acceptable code values.	C an..3	O
1131	Code list qualifier	C an..3	N
3055	Code list responsible agency, coded Refer to D.96A Data Element Dictionary for acceptable code values.	C an..3	D

Group: **MOA** Segment Group 19: Monetary Amount
Position: 0690
Group: Segment Group 15 (Allowance or Charge) Conditional (Optional)
Level: 2
Usage: Conditional (Optional)
Max Use: 2
Purpose: A group of segments specifying a monetary amount for an allowance or charge. A range to which the allowance or charge applies can be specified, e.g. an allowance of 5000 EUR may be specified if goods value ordered is greater than 100000 EUR.

Segment Summary

Pos. No.	Seg. ID	Name	Req. Des.	Max. Use	Group: Repeat
M	0700	MOA Monetary Amount	M	1	

Segment: **MOA** Monetary Amount
Position: 0700 (Trigger Segment)
Group: SG15-SG19
Level: 2
Usage: Mandatory
Max Use: 1
Purpose: A segment identifying the monetary amount for the allowance or charge.
Notes: This segment is used to specify any monetary discounts or charges for the current ALC segment group.
 Example :
 MOA+8:125.00'

Data Element Summary

Data Element	Component Element Name	Base Attributes	User Attributes
C516	MONETARY AMOUNT	M	M
	5025 Monetary amount type qualifier	M an..3	M
	Refer to D.96A Data Element Dictionary for acceptable code values.		
	5004 Monetary amount	C n..18	R
	6345 Currency, coded	C an..3	N
	ISO 4217 three alpha code		
	6343 Currency qualifier	C an..3	N
	4405 Status, coded	C an..3	N

Group: **RTE** Segment Group 20: Rate Details
Position: 0720
Group: Segment Group 15 (Allowance or Charge) Conditional (Optional)
Level: 2
Usage: Conditional (Optional)
Max Use: 1
Purpose: A group of segments specifying the rate per unit and basis to which the allowance or charge applies, e.g. the allowance/charge amount is 3 EUR per 10 tons.

Segment Summary

	Pos. No.	Seg. ID	Name	Req. Des.	Max. Use	Group: Repeat
N	0730	RTE	Rate Details	M	1	

Segment: **RTE** Rate Details
Position: 0730 (Trigger Segment)
Group: SG15-SG20
Level: 2
Usage: Mandatory
Max Use: 1
Purpose: A segment specifying the rate per unit and the basis for calculation.
Notes: This segment is used to specify rate discounts or charges for the current ALC segment group.

Example :

RTE+1:500:100'

Dependency Notes :

DE 6411 is only used if a variable quantity product or service is being indicated in the allowance or charge.

Data Element Summary

Data Element	Component Element	Name	Base Attributes	User Attributes
C128		RATE DETAILS	M	M
	5419	Rate type qualifier Refer to D.96A Data Element Dictionary for acceptable code values.	M an..3	M
	5420	Rate per unit Used to identify the monetary value.	M n..15	M
	5284	Unit price basis The quantity required for the rate to be effective.	C n..9	O
	6411	Measure unit qualifier Refer to D.96A Data Element Dictionary for acceptable code values.	C an..3	D

Group: **TAX** Segment Group 21: Duty/Tax/Fee Details
Position: 0750
Group: Segment Group 15 (Allowance or Charge) Conditional (Optional)
Level: 2
Usage: Conditional (Optional)
Max Use: 5
Purpose: A group of segments specifying tax related information for the allowance or charge and, when necessary.

Segment Summary

	Pos. No.	Seg. ID	Name	Req. Des.	Max. Use	Group: Repeat
M	0760	TAX	Duty/Tax/Fee Details	M	1	
O	0770	MOA	Monetary Amount	C	1	

Segment: **TAX** Duty/Tax/Fee Details
Position: 0760 (Trigger Segment)
Group: SG15-SG21
Level: 2
Usage: Mandatory
Max Use: 1
Purpose: A segment specifying the tax type, category and rate, or exemption, related to the allowance or charge.
Notes: Segment to signify whether the allowances and charges specified in SG14 are subject to tax.
 Example :
 TAX+7+VAT+++:::16+S'
 Dependency Notes:
 DE C241 and 5305: Tax types and categories will vary from country to country. They should be defined by national

Data Element Summary

Data Element	Component Element Name	Base Attributes	User Attributes
5283	DUTY/TAX/FEE FUNCTION QUALIFIER	M an..3	M
	Refer to D.96A Data Element Dictionary for acceptable code values.		
C241	DUTY/TAX/FEE TYPE	C	D
	5153 Duty/tax/fee type, coded	C an..3	O
	Refer to D.96A Data Element Dictionary for acceptable code values.		
	1131 Code list qualifier	C an..3	O
	Refer to D.96A Data Element Dictionary for acceptable code values.		
	3055 Code list responsible agency, coded	C an..3	D
	Refer to D.96A Data Element Dictionary for acceptable code values.		
	5152 Duty/tax/fee type	C an..35	O
C533	DUTY/TAX/FEE ACCOUNT DETAIL	C	O
	5289 Duty/tax/fee account identification	M an..6	M
	1131 Code list qualifier	C an..3	O
	Refer to D.96A Data Element Dictionary for acceptable code values.		
	3055 Code list responsible agency, coded	C an..3	D
	Refer to D.96A Data Element Dictionary for acceptable code values.		
5286	DUTY/TAX/FEE ASSESSMENT BASIS	C an..15	O
C243	DUTY/TAX/FEE DETAIL	C	A
	5279 Duty/tax/fee rate identification	C an..7	O
	1131 Code list qualifier	C an..3	O
	Refer to D.96A Data Element Dictionary for acceptable code values.		
	3055 Code list responsible agency, coded	C an..3	D
	Refer to D.96A Data Element Dictionary for acceptable code values.		
	5278 Duty/tax/fee rate	C an..17	R
	The actual rate of tax/duty.		

	5273	Duty/tax/fee rate basis identification	C	an..12	O
		Refer to D.96A Data Element Dictionary for acceptable code values.			
	1131	Code list qualifier	C	an..3	O
		Refer to D.96A Data Element Dictionary for acceptable code values.			
	3055	Code list responsible agency, coded	C	an..3	D
		Refer to D.96A Data Element Dictionary for acceptable code values.			
5305		DUTY/TAX/FEE CATEGORY, CODED	C	an..3	D
		Refer to D.96A Data Element Dictionary for acceptable code values.			
3446		PARTY TAX IDENTIFICATION NUMBER	C	an..20	O

Segment: **MOA** Monetary Amount

Position: 0770

Group: SG15-SG21

Level: 3

Usage: Conditional (Optional)

Max Use: 1

Purpose: A segment specifying the amount for the allowance or charge.

Notes: This segment is used to indicate tax or duty amount for the tax rates specified in the previous TAX segment.

Example :

MOA+124:154.76'

Data Element Summary

<u>Data Element</u>	<u>Component Element</u>	<u>Name</u>	<u>Base Attributes</u>	<u>User Attributes</u>
C516		MONETARY AMOUNT	M	M
	5025	Monetary amount type qualifier	M an..3	M
		Refer to D.96A Data Element Dictionary for acceptable code values.		
	5004	Monetary amount	C n..18	R
	6345	Currency, coded	C an..3	N
		ISO 4217 three alpha code		
	6343	Currency qualifier	C an..3	N
	4405	Status, coded	C an..3	N

Group: **LIN** Segment Group 25: Line Item
Position: 0890
Group:
Level: 1
Usage: Conditional (Optional)
Max Use: 9999999
Purpose: A group of segments providing details of the individual invoiced items. There must be at least one occurrence of Segment group 22 within an invoice, but not necessarily in a credit note or a debit note. This Segment group may be repeated to give sub-line details.

Segment Summary

	<u>Pos. No.</u>	<u>Seg. ID</u>	<u>Name</u>	<u>Req. Des.</u>	<u>Max. Use</u>	<u>Group: Repeat</u>
M	0900	LIN	Line Item	M	1	
O	0910	PIA	Additional Product Id	C	25	
O	0920	IMD	Item Description	C	10	
O	0930	MEA	Measurements	C	5	
O	0940	QTY	Quantity	C	5	
O	0960	ALI	Additional Information	C	5	
O	0970	DTM	Date/Time/Period	C	35	
O	0980	GIN	Goods Identity Number	C	1000	
O	1000	QVR	Quantity Variances	C	1	
O	1020	FTX	Free Text	C	5	
	1030		Segment Group 26: Monetary Amount	C		5
	1060		Segment Group 27: Payment Terms Basis	C		10
	1110		Segment Group 28: Price Details	C		25
	1160		Segment Group 29: Reference	C		10
	1190		Segment Group 30: Package	C		10
	1270		Segment Group 32: Place/Location Identification	C		9999
	1310		Segment Group 33: Duty/Tax/Fee Details	C		99
	1350		Segment Group 34: Name and Address	C		20
	1470		Segment Group 38: Allowance or Charge	C		15
	1660		Segment Group 44: Details of Transport	C		10
	1710		Segment Group 46: Terms of Delivery or Transport	C		5

Segment: **LIN** Line Item
Position: 0900 (Trigger Segment)
Group: SG25
Level: 1
Usage: Mandatory
Max Use: 1

Purpose: A segment identifying the line item by the line number and configuration level, and additionally, identifying the product or service invoiced. Other product identification numbers, e.g. Buyer product number etc., can be specified within the following PIA segment.

Notes: The LIN segment signifies the beginning of the detail section of the Invoice message. The detail section is formed by a repeating group of segments, always starting with a LIN segment.

Each LIN segment corresponds to a different product being invoiced.

Example :

LIN+1++4000862141404:EN'

LIN+1++94796600:IN'

Dependency Notes :

Data elements 5495 and 7083 are only used when sub-lines are required.

Data Element Summary

Data Element	Component Element	Name	Base Attributes	User Attributes
1082		LINE ITEM NUMBER	C n..6	R
		Application generated number of the item lines within the invoice.		
1229		ACTION REQUEST/NOTIFICATION, CODED	C an..3	N
C212		ITEM NUMBER IDENTIFICATION	C	D
	7140	Item number	C an..35	R
		Format n..14.		
		EAN-8, UPC-A, EAN-13, or DUN-14 - this is the number of the article being invoiced.		
	7143	Item number type, coded	C an..3	R
		EN	International Article Numbering Association (EAN)	
		UP	UPC (Universal product code)	
		IN	IN - Buyer's item number.	
	1131	Code list qualifier	C an..3	N
	3055	Code list responsible agency, coded	C an..3	N
C829		SUB-LINE INFORMATION	C	D
	5495	Sub-line indicator, coded	C an..3	R
		1	Sub-line information	
	1082	Line item number	C n..6	R
1222		CONFIGURATION LEVEL	C n..2	N
7083		CONFIGURATION, CODED	C an..3	D

Refer to D.96A Data Element Dictionary for acceptable code values.

Segment: **PIA** Additional Product Id
Position: 0910
Group: SG25
Level: 2
Usage: Conditional (Optional)
Max Use: 25
Purpose: A segment providing either additional identification to the product specified in the LIN segment (e.g. Harmonized System number), or provides any substitute product identification.

Notes: This segment is used to specify additional or substitutional item identification codes such as a buyer's or supplier's item number.

DE 4347: Product Id function coded has the following restricted coded functions:

1 - Additional Identification - To provide an additional identity for the product identified in the LIN segment. The additional identification can consist of :

A supplemental identification which provides more information complementary to the main article number provided in the LIN segment, e.g. a batch number, promotional variant number, product group number, etc.

An alternative identification which may be used instead of the main article number provided in the LIN segment, e.g. a buyers article number, an HIBC code, etc.

4 - Substituted For - To provide the article number of a product which has been substituted by the product identified by the article number provided in the LIN segment.

In the Invoice this function code may be used to inform trading partners of the article number of the product originally ordered which has been substituted by another product identified in the LIN segment. In this case, the segment LIN will refer to the invoiced product and the PIA segment will provide the article number of the unavailable product.

5 - Product Identification - To provide an additional product identification which is of equal importance or significance to the code provided in the LIN segment.

Examples :

PIA+1+ABC5343:SA'

In this example the PIA segment is used to provide an additional identification to the article number provided in the LIN segment. The EAN article number 4000862141404 provided in the LIN segment refers to the internal buyers part number ABC5343.

PIA+4+541234511184:EN'

In this example the PIA segment is used to provide the article number of the product which has been substituted by the invoiced product identified in the LIN segment by the EAN article number 4000862141404.

PIA+5+4000862141411:EN'

This example details the article number 4000862141411 which is of equal importance or significance to the article number 4000862141404 identified in the LIN segment.

Data Element Summary				
Data Element	Component Element Name		Base Attributes	User Attributes
4347		PRODUCT ID. FUNCTION QUALIFIER	M an..3	M
		1 Additional identification		
		4 Substituted for		
		5 Product identification		
C212		ITEM NUMBER IDENTIFICATION	M	M
	7140	Item number	C an..35	R
	7143	Item number type, coded	C an..3	R
		Refer to D.96A Data Element Dictionary for acceptable code values.		
	1131	Code list qualifier	C an..3	N
	3055	Code list responsible agency, coded	C an..3	D
		Refer to D.96A Data Element Dictionary for acceptable code values.		
C212		ITEM NUMBER IDENTIFICATION	C	O
	7140	Item number	C an..35	R
	7143	Item number type, coded	C an..3	R
		Refer to D.96A Data Element Dictionary for acceptable code values.		
	1131	Code list qualifier	C an..3	N
	3055	Code list responsible agency, coded	C an..3	D
		Refer to D.96A Data Element Dictionary for acceptable code values.		
C212		ITEM NUMBER IDENTIFICATION	C	O
	7140	Item number	C an..35	R
	7143	Item number type, coded	C an..3	R
		Refer to D.96A Data Element Dictionary for acceptable code values.		
	1131	Code list qualifier	C an..3	N
	3055	Code list responsible agency, coded	C an..3	D
		Refer to D.96A Data Element Dictionary for acceptable code values.		
C212		ITEM NUMBER IDENTIFICATION	C	O
	7140	Item number	C an..35	R
	7143	Item number type, coded	C an..3	R
		Refer to D.96A Data Element Dictionary for acceptable code values.		
	1131	Code list qualifier	C an..3	N
	3055	Code list responsible agency, coded	C an..3	D
		Refer to D.96A Data Element Dictionary for acceptable code values.		
C212		ITEM NUMBER IDENTIFICATION	C	O
	7140	Item number	C an..35	R
	7143	Item number type, coded	C an..3	R
		Refer to D.96A Data Element Dictionary for acceptable code values.		
	1131	Code list qualifier	C an..3	N

3055 Code list responsible agency, coded C an..3 D
Refer to D.96A Data Element Dictionary for acceptable code values.

Segment: **IMD** Item Description
Position: 0920
Group: SG25
Level: 2
Usage: Conditional (Optional)
Max Use: 10
Purpose: A segment for describing the product or service being invoiced as well as product characteristic. This segment should be used for products or services that cannot be fully identified by a product code or article number.

Notes: This segment is used to identify the current line item.

It is recommended that this segment only be used for coded descriptions. Data element 7008 in clear text should only be used when no product code is available or when free-form descriptions are required by trading partners.

If both free-form and coded descriptions are required then the IMD segment must be repeated.

Example :

IMD+C++TU'
 IMD+F++++:CORNCRUNCHIES:CASE'

Data Element Summary

Data Element	Component Element	Name	Base Attributes	User Attributes
7077		ITEM DESCRIPTION TYPE, CODED	C an..3	O
		A Free-form long description		
		B Code and text		
		C Code (from industry code list)		
		E Free-form short description		
		F Free-form		
		S Structured (from industry code list)		
7081		ITEM CHARACTERISTIC, CODED	C an..3	O
		Refer to D.96A Data Element Dictionary for acceptable code values.		
C273		ITEM DESCRIPTION	C	A
	7009	Item description identification	C an..17	O
		Refer to D.96A Data Element Dictionary for acceptable code values.		
	1131	Code list qualifier	C an..3	O
		Refer to D.96A Data Element Dictionary for acceptable code values.		
	3055	Code list responsible agency, coded	C an..3	D
		Refer to D.96A Data Element Dictionary for acceptable code values.		
	7008	Item description	C an..35	O
	7008	Item description	C an..35	O
	3453	Language, coded	C an..3	O
		ISO 639 two alpha code		
		Refer to D.96A Data Element Dictionary for acceptable code values.		
7383		SURFACE/LAYER INDICATOR, CODED	C an..3	N

Segment: **MEA** Measurements
Position: 0930
Group: SG25
Level: 2
Usage: Conditional (Optional)
Max Use: 5
Purpose: A segment enabling the physical measurements of the invoiced item to be specified where this is required for full identification of the product. Any measurements must refer to the product in its unpacked form e.g. thickness of plastic film, length, weight, etc.
Notes: This segment is used to specify the physical dimensions, storage limitations, or transport equipment limitations of a product.
 Example :
 Product with dimensions 500mm x 200mm x 100mm.
 MEA+PD+HT+MMT:500'
 MEA+PD+LN+MMT:200'
 MEA+PD+WD+MMT:100'

Data Element Summary

Data Element	Component Element	Name	Base Attributes	User Attributes
6311		MEASUREMENT APPLICATION QUALIFIER	M an..3	M
		Refer to D.96A Data Element Dictionary for acceptable code values.		
C502		MEASUREMENT DETAILS	C	A
	6313	Measurement dimension, coded	C an..3	A
		Refer to D.96A Data Element Dictionary for acceptable code values.		
	6321	Measurement significance, coded	C an..3	O
		Refer to D.96A Data Element Dictionary for acceptable code values.		
	6155	Measurement attribute, coded	C an..3	N
	6154	Measurement attribute	C an..70	N
C174		VALUE/RANGE	C	R
	6411	Measure unit qualifier	M an..3	M
		Refer to D.96A Data Element Dictionary for acceptable code values.		
	6314	Measurement value	C n..18	O
	6162	Range minimum	C n..18	O
	6152	Range maximum	C n..18	O
	6432	Significant digits	C n..2	O
7383		SURFACE/LAYER INDICATOR, CODED	C an..3	N

Segment: **QTY** Quantity
Position: 0940
Group: SG25
Level: 2
Usage: Conditional (Optional)
Max Use: 5
Purpose: A segment identifying the product quantities e.g. invoiced quantity.
Notes: This segment is used to specify quantities related to the current line item.

DE 6063: The code value '1, Discrete quantity' is used at sub-line level to indicate the quantity of sub-line items included in the main line being invoiced.

Example :

QTY+47:40'

Dependency Notes :

DE 6411: This DE is only used if the product being invoiced is of variable quantity.

Data Element Summary

<u>Data Element</u>	<u>Component Element Name</u>	<u>Base Attributes</u>	<u>User Attributes</u>
C186	QUANTITY DETAILS	M	M
	6063 Quantity qualifier	M an..3	M
	1 Discrete quantity		
	12 Despatch quantity		
	21 Ordered quantity		
	46 Delivered quantity		
	47 Invoiced quantity		
	48 Received quantity		
	59 Number of consumer units in the traded unit		
	61 Return quantity		
	192 Free goods quantity		
	194 Received and accepted		
	39E Minimum invoicing quantity (EAN Code)		
	6060 Quantity	M n..15	M
	6411 Measure unit qualifier	C an..3	D

Refer to D.96A Data Element Dictionary for acceptable code values.

Segment: **ALI** Additional Information

Position: 0960

Group: SG25

Level: 2

Usage: Conditional (Optional)

Max Use: 5

Purpose: A segment indicating that the line item is subject to special conditions owing to origin, customs preference, embargo regulations or commercial factors.

Notes: This segment is used to indicate special conditions or the country of origin of the current line item.

Example :

ALI+DE'

Data Element Summary

<u>Data Element</u>	<u>Component Element Name</u>	<u>Base Attributes</u>	<u>User Attributes</u>
3239	COUNTRY OF ORIGIN, CODED	C an..3	O
	Use ISO 3166 two alpha country code.		
	Refer to D.96A Data Element Dictionary for acceptable code values.		
9213	TYPE OF DUTY REGIME, CODED	C an..3	O
	Refer to D.96A Data Element Dictionary for acceptable code values.		
4183	SPECIAL CONDITIONS, CODED	C an..3	O
	Refer to D.96A Data Element Dictionary for acceptable code values.		
4183	SPECIAL CONDITIONS, CODED	C an..3	O
	Refer to D.96A Data Element Dictionary for acceptable code values.		
4183	SPECIAL CONDITIONS, CODED	C an..3	O
	Refer to D.96A Data Element Dictionary for acceptable code values.		
4183	SPECIAL CONDITIONS, CODED	C an..3	O
	Refer to D.96A Data Element Dictionary for acceptable code values.		
4183	SPECIAL CONDITIONS, CODED	C an..3	O
	Refer to D.96A Data Element Dictionary for acceptable code values.		

Segment: **DTM** Date/Time/Period
Position: 0970
Group: SG25
Level: 2
Usage: Conditional (Optional)
Max Use: 35
Purpose: A segment specifying date/time/period details relating to the line item only.
Notes: This segment is used to specify the date of despatch, delivery, or receipt of the current line item.

Example :

DTM+35:19930801:102'

Data Element Summary

Data Element	Component Element Name	Base Attributes	User Attributes
C507	DATE/TIME/PERIOD	M	M
	2005 Date/time/period qualifier	M an..3	M
	11 Despatch date and/or time		
	35 Delivery date/time, actual		
	36 Expiry date		
	50 Goods receipt date/time		
	97		
	194		
	206		
	263 Invoicing period		
	95E Service(s) completed date/time, actual (EAN Code)		
	97E Aging period (EAN Code)		
2380	Date/time/period	C an..35	R
2379	Date/time/period format qualifier	C an..3	R

Refer to D.96A Data Element Dictionary for acceptable code values.

Segment: **GIN** Goods Identity Number

Position: 0980

Group: SG25

Level: 2

Usage: Conditional (Optional)

Max Use: 1000

Purpose: A segment providing identity numbers to be applied to the goods being invoiced, e.g. serial numbers for assembled equipment.

Notes: Segment Notes:

This segment is used to indicate a serial number or a range of numbers.

Example:

GIN+BN+AS-1299:AS-1350'

Data Element Summary

<u>Data Element</u>	<u>Component Element</u>	<u>Name</u>	<u>Base Attributes</u>	<u>User Attributes</u>
7405		IDENTITY NUMBER QUALIFIER	M an..3	M
	BN	Serial number		
C208		IDENTITY NUMBER RANGE	M	M
	7402	Identity number	M an..35	M
	7402	Identity number	C an..35	O
C208		IDENTITY NUMBER RANGE	C	O
	7402	Identity number	M an..35	M
	7402	Identity number	C an..35	O
C208		IDENTITY NUMBER RANGE	C	O
	7402	Identity number	M an..35	M
	7402	Identity number	C an..35	O
C208		IDENTITY NUMBER RANGE	C	O
	7402	Identity number	M an..35	M
	7402	Identity number	C an..35	O

Segment: **QVR** Quantity Variances
Position: 1000
Group: SG25
Level: 2
Usage: Conditional (Optional)
Max Use: 1
Purpose: A segment identifying quantity variances, between, e.g. quantity delivered/invoiced and quantity ordered.
Notes: This segment is used to specify any variances between what was ordered, what was shipped/despached and what isbeing invoiced.
 For negative values (e.g. damaged goods not accepted) the variance must be expressed as negative.
 DE 6063: The codes 12 and 21 should only be used to report differences between the invoiced quantity and whatwas actually despached or ordered. The codes 61 and 124 should only be used to (negatively) indicate the quantityof items which was delivered but found to be damaged, and/or returned.
 Example :
 QVR+-20:21'
 This example shows a variance of 20 between what is being invoiced (QTY at LIN level) and what was originallyordered.

Data Element Summary				
Data Element	Component Element	Name	Base Attributes	User Attributes
C279		QUANTITY DIFFERENCE INFORMATION	C	R
	6064	Quantity difference	M n..15	M
		Specify the actual variance amount here.		
	6063	Quantity qualifier	C an..3	R
		12 Despatch quantity		
		21 Ordered quantity		
		61 Return quantity		
		119 Short shipped		
		121 Over shipped		
		124 Damaged goods		
4221		DISCREPANCY, CODED	C an..3	O
		Refer to D.96A Data Element Dictionary for acceptable code values.		
C960		REASON FOR CHANGE	C	O
	4295	Change reason, coded	C an..3	O
		Refer to D.96A Data Element Dictionary for acceptable code values.		
	1131	Code list qualifier	C an..3	O
		Refer to D.96A Data Element Dictionary for acceptable code values.		
	3055	Code list responsible agency, coded	C an..3	D
		Refer to D.96A Data Element Dictionary for acceptable code values.		
	4294	Change reason	C an..35	O

Segment: **FTX** Free Text
Position: 1020
Group: SG25
Level: 2
Usage: Conditional (Optional)
Max Use: 5
Purpose: A segment with free text information, in coded or clear form, used when additional information is needed but cannot be accommodated within other segments. In computer to computer exchanges such text will normally require the receiver to process this segment manually.

Notes: The use of the FTX segment in free form is not recommended since in most cases it inhibits automatic processing of the Invoice. Coded references to standard texts is an available functionality which enables automatic processing and reduces transmission and processing overheads. Standard texts should be mutually defined among trading partners and can be used to cover legal or other requirements.

Example :

FTX+ZZZ+1+002'

e.g. Standard Text Code 002 = 'Missing items will be shipped next week.'

Dependency Notes :

DE C107: This composite is only used when trading partners have agreed to use mutually defined code values.

DE C108: This composite is only used if coded text can not be used.

DE 3453: The language code is only used to indicate the free text language. It may only used if composite C108 is used.

Data Element Summary

Data Element	Component Element Name	Base Attributes	User Attributes
4451	TEXT SUBJECT QUALIFIER	M an..3	M
	Refer to D.96A Data Element Dictionary for acceptable code values.		
4453	TEXT FUNCTION, CODED	C an..3	O
	1 Text for subsequent use		
C107	TEXT REFERENCE	C	D
	4441 Free text, coded	M an..3	M
	1131 Code list qualifier	C an..3	O
	Refer to D.96A Data Element Dictionary for acceptable code values.		
	3055 Code list responsible agency, coded	C an..3	R
	Refer to D.96A Data Element Dictionary for acceptable code values.		
C108	TEXT LITERAL	C	D
	4440 Free text	M an..70	M
	4440 Free text	C an..70	O

	4440	Free text	C	an..70	O
	4440	Free text	C	an..70	O
	4440	Free text	C	an..70	O
3453		LANGUAGE, CODED	C	an..3	D

ISO 639 two alpha code

Refer to D.96A Data Element Dictionary for acceptable code values.

Group: **MOA** Segment Group 26: Monetary Amount
Position: 1030
Group: Segment Group 25 (Line Item) Conditional (Optional)
Level: 2
Usage: Conditional (Optional)
Max Use: 5
Purpose: A group of segments specifying any monetary amounts relating to the products and when necessary a currency.

Segment Summary

	<u>Pos. No.</u>	<u>Seg. ID</u>	<u>Name</u>	<u>Req. Des.</u>	<u>Max. Use</u>	<u>Group: Repeat</u>
M	1040	MOA	Monetary Amount	M	1	

Segment: **MOA** Monetary Amount
Position: 1040 (Trigger Segment)
Group: SG25-SG26
Level: 2
Usage: Mandatory
Max Use: 1
Purpose: A segment specifying any monetary amounts relating to the product, e.g. item amount, insurance value, customs value.

Notes: The total line item amount is specified in the MOA segment.

Use code 203 if the price given in the PRI segment is a gross price, i.e., Item Amount = ((Quantity * Unit Price) + Charges - Allowances).

Use code 66 if the price given in the PRI segment is a net price, i.e., Item Amount = (Quantity * Unit Price).

Example :

MOA+203:580'

This example shows the line item amount as 580. This figure is derived from multiplying the invoiced quantity, 40, by the price 14.50.

Data Element Summary

<u>Data Element</u>	<u>Component Element</u>	<u>Name</u>	<u>Base Attributes</u>	<u>User Attributes</u>
C516		MONETARY AMOUNT	M	M
	5025	Monetary amount type qualifier	M an..3	M
		Refer to D.96A Data Element Dictionary for acceptable code values.		
	5004	Monetary amount	C n..18	R
	6345	Currency, coded	C an..3	O
		ISO 4217 three alpha		
		Refer to D.96A Data Element Dictionary for acceptable code values.		
	6343	Currency qualifier	C an..3	O
		4 Invoicing currency		
		10 Pricing currency		
		11 Payment currency		
	4405	Status, coded	C an..3	N

Group: **PAT** Segment Group 27: Payment Terms Basis
Position: 1060
Group: Segment Group 25 (Line Item) Conditional (Optional)
Level: 2
Usage: Conditional (Optional)
Max Use: 10
Purpose: A group of segments specifying the terms of payment for the line item where this is different to that specified in the heading section.

Segment Summary

	<u>Pos. No.</u>	<u>Seg. ID</u>	<u>Name</u>	<u>Req. Des.</u>	<u>Max. Use</u>	<u>Group: Repeat</u>
M	1070	PAT	Payment Terms Basis	M	1	
O	1080	DTM	Date/Time/Period	C	5	
O	1090	PCD	Percentage Details	C	1	
O	1100	MOA	Monetary Amount	C	1	

Segment: **PAT** Payment Terms Basis
Position: 1070 (Trigger Segment)
Group: SG25-SG27
Level: 2
Usage: Mandatory
Max Use: 1
Purpose: A segment identifying the payment terms and date/time basis.
Notes: This segment is used to identify specific payment terms for the current line item.

Example :

The following example indicates extended payment terms with payment due 90 days after the reference date which is the invoice date.

PAT+7++5:3:D:90'

Data Element Summary				
Data Element	Component Element	Name	Base Attributes	User Attributes
4279		PAYMENT TERMS TYPE QUALIFIER	M an..3	M
		Refer to D.96A Data Element Dictionary for acceptable code values.		
C110		PAYMENT TERMS	C	N
	4277	Terms of payment identification	M an..17	N
	1131	Code list qualifier	C an..3	N
	3055	Code list responsible agency, coded	C an..3	N
	4276	Terms of payment	C an..35	N
	4276	Terms of payment	C an..35	N
C112		TERMS/TIME INFORMATION	C	O
	2475	Payment time reference, coded	M an..3	M
		Refer to D.96A Data Element Dictionary for acceptable code values.		
	2009	Time relation, coded	C an..3	O
		Refer to D.96A Data Element Dictionary for acceptable code values.		
	2151	Type of period, coded	C an..3	O
		Refer to D.96A Data Element Dictionary for acceptable code values.		
	2152	Number of periods	C n..3	O

Segment: **DTM** Date/Time/Period
Position: 1080
Group: SG25-SG27
Level: 3
Usage: Conditional (Optional)
Max Use: 5
Purpose: A segment giving the specific date/time/period, if needed, of any payments, discounts, instalments etc.
Notes: Segment to specify any dates associated with the Payment Terms of an individual line item.

Example :

DTM+13:19930830:102'

Data Element Summary				
Data Element	Component Element	Name	Base Attributes	User Attributes
C507		DATE/TIME/PERIOD	M	M

2005	Date/time/period qualifier	M	an..3	M
	Refer to D.96A Data Element Dictionary for acceptable code values.			
2380	Date/time/period	C	an..35	R
2379	Date/time/period format qualifier	C	an..3	R
	Refer to D.96A Data Element Dictionary for acceptable code values.			

Segment: **PCD** Percentage Details
Position: 1090
Group: SG25-SG27
Level: 3
Usage: Conditional (Optional)
Max Use: 1
Purpose: A segment specifying discount, interest, penalty as well as instalment percentage.
Notes: This segment specifies the penalty or discount percentage applicable for the terms of payment defined in the PAT segment.
 Example :
 PCD+12:2.5'

Data Element Summary

<u>Data Element</u>	<u>Component Element Name</u>	<u>Base Attributes</u>	<u>User Attributes</u>
C501	PERCENTAGE DETAILS	M	M
	5245 Percentage qualifier	M an..3	M
	Refer to D.96A Data Element Dictionary for acceptable code values.		
	5482 Percentage	C n..10	R
	5249 Percentage basis, coded	C an..3	N
	1131 Code list qualifier	C an..3	N
	3055 Code list responsible agency, coded	C an..3	N

Segment: **MOA** Monetary Amount
Position: 1100
Group: SG25-SG27
Level: 3
Usage: Conditional (Optional)
Max Use: 1
Purpose: A segment specifying amounts related to payment discount penalties or instalments.
Notes: This segment specifies the penalty or discount monetary amount applicable for the terms of payment defined in the PAT segment.
 Example :
 MOA+201:100'

Data Element Summary

<u>Data Element</u>	<u>Component Element Name</u>	<u>Base Attributes</u>	<u>User Attributes</u>
C516	MONETARY AMOUNT	M	M
	5025 Monetary amount type qualifier	M an..3	M

Refer to D.96A Data Element Dictionary for acceptable code values.

5004	Monetary amount	C	n..18	R
6345	Currency, coded	C	an..3	N
ISO 4217 three alpha code				
6343	Currency qualifier	C	an..3	N
4405	Status, coded	C	an..3	N

Group: **PRI** Segment Group 28: Price Details
Position: 1110
Group: Segment Group 25 (Line Item) Conditional (Optional)
Level: 2
Usage: Conditional (Optional)
Max Use: 25
Purpose: A group of segments identifying the relevant pricing information for the goods or services invoiced.

Segment Summary

	<u>Pos. No.</u>	<u>Seg. ID</u>	<u>Name</u>	<u>Req. Des.</u>	<u>Max. Use</u>	<u>Group: Repeat</u>
M	1120	PRI	Price Details	M	1	
O	1130	APR	Additional Price Information	C	1	

Segment: **PRI** Price Details
Position: 1120 (Trigger Segment)
Group: SG25-SG28
Level: 2
Usage: Mandatory
Max Use: 1
Purpose: A segment to specify the price type and amount. The price used in the calculation of the line amount will be identified as 'Price'. Indication of "net price" or "gross price" can be given in 5387 "Price type qualifier".
Notes: This segment specified pricing information relevant to the current line item.

Example :

For all the following examples the invoicing currency has already been identified as Pounds Sterling.

PRI+AAA:14.50:CA'

Net price of 14.50 (excluding tax) to be used for calculation purposes. This price includes all allowances and charges. The price is a catalogue price.

PRI+AAB:25:CT¹

Gross calculation price of 25 (excluding tax) which does not include any allowances or charges. The price is a contract price.

PRI+XXX:2.56:CA:SRP¹

Price of 2.56 is a suggested retail price from the catalogue which does not include any allowances or charges but includes taxes.

PRI+YYY:4.20:CA:RTP¹

Price of 4.20 is a retail price from the catalogue which does not include allowances, charges or taxes.

Dependency Notes :

Data elements 5284 and 6411 are only used to indicate that the price is for a variable quantity product.

Data Element Summary

<u>Data Element</u>	<u>Component Element Name</u>	<u>Base Attributes</u>	<u>User Attributes</u>
C509	PRICE INFORMATION	C	R
	5125 Price qualifier	M an..3	M
	Refer to D.96A Data Element Dictionary for acceptable code values.		
	5118 Price	C n..15	R
	5375 Price type, coded	C an..3	O
	Refer to D.96A Data Element Dictionary for acceptable code values.		
	5387 Price type qualifier	C an..3	O
	Refer to D.96A Data Element Dictionary for acceptable code values.		
	5284 Unit price basis	C n..9	D
	6411 Measure unit qualifier	C an..3	D
	Refer to D.96A Data Element Dictionary for acceptable code values.		
5213	SUB-LINE PRICE CHANGE, CODED	C an..3	N

Segment: **APR** Additional Price Information

Position: 1130

Group: SG25-SG28

Level: 3

Usage: Conditional (Optional)

Max Use: 1

Purpose: A segment to identify pricing information such as a price multiplier, the class or type of trade and additionally identifying the reason for any changes.

Notes: Segment Notes:

This segment is used to provide a reason for a change in the price specified in the PRI segment.

Example:
APR+MF+0.95:A+X29'

Data Element Summary

<u>Data Element</u>	<u>Component Element</u>	<u>Name</u>	<u>Base Attributes</u>	<u>User Attributes</u>
4043		CLASS OF TRADE, CODED Refer to D.96A Data Element Dictionary for acceptable code values.	C an..3	O
C138		PRICE MULTIPLIER INFORMATION	C	R
	5394	Price multiplier	M n..12	M
	5393	Price multiplier qualifier Refer to D.96A Data Element Dictionary for acceptable code values.	C an..3	R
C960		REASON FOR CHANGE	C	A
	4295	Change reason, coded X29 Government price charge (EAN Code)	C an..3	O
	1131	Code list qualifier	C an..3	N
	3055	Code list responsible agency, coded 9 EAN (International Article Numbering association)	C an..3	R
	4294	Change reason	C an..35	O

Group: **RFF** Segment Group 29: Reference
Position: 1160
Group: Segment Group 25 (Line Item) Conditional (Optional)
Level: 2
Usage: Conditional (Optional)
Max Use: 10
Purpose: A group giving references and where necessary, their dates, relating to the line item.

Segment Summary

	<u>Pos. No.</u>	<u>Seg. ID</u>	<u>Name</u>	<u>Req. Des.</u>	<u>Max. Use</u>	<u>Group: Repeat</u>
M	1170	RFF	Reference	M	1	
O	1180	DTM	Date/Time/Period	C	5	

Segment: **RFF** Reference
Position: 1170 (Trigger Segment)
Group: SG25-SG29
Level: 2
Usage: Mandatory

Max Use: 1

Purpose: A segment identifying the reference by its number and where appropriate a line number within a document.

Notes: The RFF segment at line level is used to provide references specific to the line item, it overrides any global references provided in the heading section of the invoice.

Example :

RFF+AAK:8306'

Data Element Summary

<u>Data Element</u>	<u>Component Element Name</u>	<u>Base Attributes</u>	<u>User Attributes</u>
C506	REFERENCE	M	M
	1153 Reference qualifier	M an..3	M
	Refer to D.96A Data Element Dictionary for acceptable code values.		
	1154 Reference number	C an..35	R
	1156 Line number	C an..6	O
	4000 Reference version number	C an..35	N

Segment: **DTM** Date/Time/Period

Position: 1180

Group: SG25-SG29

Level: 3

Usage: Conditional (Optional)

Max Use: 5

Purpose: A segment specifying the date/time related to the reference.

Notes: This DTM segment is used to specify dates and times pertinent to the previous RFF segment.

Example :

DTM+171:19930802:102'

Data Element Summary

<u>Data Element</u>	<u>Component Element Name</u>	<u>Base Attributes</u>	<u>User Attributes</u>
C507	DATE/TIME/PERIOD	M	M
	2005 Date/time/period qualifier	M an..3	M
	171 Reference date/time		
	2380 Date/time/period	C an..35	R
	2379 Date/time/period format qualifier	C an..3	R
	Refer to D.96A Data Element Dictionary for acceptable code values.		

Group: **PAC** Segment Group 30: Package
Position: 1190
Group: Segment Group 25 (Line Item) Conditional (Optional)
Level: 2
Usage: Conditional (Optional)
Max Use: 10
Purpose: A group of segments identifying the packaging, physical dimensions, and marks and numbers for goods referenced in the line item.

Segment Summary

	<u>Pos. No.</u>	<u>Seg. ID</u>	<u>Name</u>	<u>Req. Des.</u>	<u>Max. Use</u>	<u>Group: Repeat</u>
M	1200	PAC	Package	M	1	
O	1210	MEA	Measurements	C	10	
	1220		Segment Group 31: Package Identification	C		10

Segment: **PAC** Package
Position: 1200 (Trigger Segment)
Group: SG25-SG30
Level: 2
Usage: Mandatory
Max Use: 1
Purpose: A segment specifying the number and type of packages for the line item, e.g. number and type of pallets.

Notes: This segment is used to specify the number and type of packages for the current line item.

DE 7224: This data element can be used to specify the number of despatch units used to ship the ordered number of consumer units, in those cases where despatch unit coding has not yet been implemented.

Example :

PAC+++CR++3'

Dependency Notes :

Composite C532 is only used where the packaging being described is returnable. This composite identifies who is responsible for payment of its return.

Data Element Summary

<u>Data Element</u>	<u>Component Element Name</u>	<u>Base Attributes</u>	<u>User Attributes</u>
7224	NUMBER OF PACKAGES	C n..8	O
C531	PACKAGING DETAILS	C	O
	7075 Packaging level, coded	C an..3	O

Refer to D.96A Data Element Dictionary for acceptable code values.

	7233	Packaging related information, coded	C	an..3	O
		Refer to D.96A Data Element Dictionary for acceptable code values.			
	7073	Packaging terms and conditions, coded	C	an..3	O
		Refer to D.96A Data Element Dictionary for acceptable code values.			
C202		PACKAGE TYPE	C		O
	7065	Type of packages identification	C	an..17	A
		Refer to D.96A Data Element Dictionary for acceptable code values.			
	1131	Code list qualifier	C	an..3	O
		Refer to D.96A Data Element Dictionary for acceptable code values.			
	3055	Code list responsible agency, coded	C	an..3	D
		Refer to D.96A Data Element Dictionary for acceptable code values.			
	7064	Type of packages	C	an..35	O
C402		PACKAGE TYPE IDENTIFICATION	C		N
	7077	Item description type, coded	M	an..3	N
	7064	Type of packages	M	an..35	N
	7143	Item number type, coded	C	an..3	N
	7064	Type of packages	C	an..35	N
	7143	Item number type, coded	C	an..3	N
C532		RETURNABLE PACKAGE DETAILS	C		D
	8395	Returnable package freight payment responsibility, coded	C	an..3	O
		Refer to D.96A Data Element Dictionary for acceptable code values.			
	8393	Returnable package load contents, coded	C	an..3	N

Segment: MEA Measurements

Position: 1210
Group: SG25-SG30
Level: 3
Usage: Conditional (Optional)
Max Use: 10

Purpose: A segment specifying physical measurements of packages described in the PAC segment e.g. package length, weight.

Notes: This segment is used to specify the dimensions or limitations of the packaging defined in the previous PAC segment.

Example :

MEA+PD+AAA:4+KGM:400'

The net weight of the package is 400 kilograms.

Data Element Summary

Data Element	Component Element Name	Base Attributes	User Attributes
6311	MEASUREMENT APPLICATION QUALIFIER	M an..3	M

		Refer to D.96A Data Element Dictionary for acceptable code values.		
C502		MEASUREMENT DETAILS	C	A
	6313	Measurement dimension, coded	C an..3	A
		Refer to D.96A Data Element Dictionary for acceptable code values.		
	6321	Measurement significance, coded	C an..3	O
		Refer to D.96A Data Element Dictionary for acceptable code values.		
	6155	Measurement attribute, coded	C an..3	N
	6154	Measurement attribute	C an..70	N
C174		VALUE/RANGE	C	R
	6411	Measure unit qualifier	M an..3	M
		Refer to D.96A Data Element Dictionary for acceptable code values.		
	6314	Measurement value	C n..18	O
	6162	Range minimum	C n..18	O
	6152	Range maximum	C n..18	O
	6432	Significant digits	C n..2	O
7383		SURFACE/LAYER INDICATOR, CODED	C an..3	N

Group: **PCI** Segment Group 31: Package Identification
Position: 1220
Group: Segment Group 30 (Package) Conditional (Optional)
Level: 3
Usage: Conditional (Optional)
Max Use: 10
Purpose: A group of segments specifying the markings and labels on individual physical units.

Segment Summary

	<u>Pos. No.</u>	<u>Seg. ID</u>	<u>Name</u>	<u>Req. Des.</u>	<u>Max. Use</u>	<u>Group: Repeat</u>
M	1230	PCI	Package Identification	M	1	
O	1260	GIN	Goods Identity Number	C	10	

Segment: **PCI** Package Identification
Position: 1230 (Trigger Segment)
Group: SG25-SG30-SG31
Level: 3
Usage: Mandatory
Max Use: 1
Purpose: A segment specifying markings and labels used on individual physical units (packages) described in the PAC segment.

Notes: This segment is used to identify markings on the packaging of the product being invoiced.

Example :

PCI+33E'

Data Element Summary				
Data Element	Component Element	Name	Base Attributes	User Attributes
4233		MARKING INSTRUCTIONS, CODED	C an..3	R
		Refer to D.96A Data Element Dictionary for acceptable code values.		
C210		MARKS & LABELS	C	O
	7102	Shipping marks	M an..35	M
	7102	Shipping marks	C an..35	O
	7102	Shipping marks	C an..35	O
	7102	Shipping marks	C an..35	O
	7102	Shipping marks	C an..35	O
	7102	Shipping marks	C an..35	O
	7102	Shipping marks	C an..35	O
	7102	Shipping marks	C an..35	O
	7102	Shipping marks	C an..35	O
8275		CONTAINER/PACKAGE STATUS, CODED	C an..3	N
C827		TYPE OF MARKING	C	N
	7511	Type of marking, coded	M an..3	N
	1131	Code list qualifier	C an..3	N
	3055	Code list responsible agency, coded	C an..3	N

Segment: **GIN** Goods Identity Number

Position: 1260

Group: SG25-SG30-SG31

Level: 4

Usage: Conditional (Optional)

Max Use: 10

Purpose: A segment identifying the number or ranges of numbers for use with the package markings.

Notes: This segment is used to provide the serial shipping container code (SSCC) marked on the packaging of the products being invoiced.

Example:

GIN+BJ+354123450000000014'

Data Element Summary

<u>Data Element</u>	<u>Component Element Name</u>	<u>Base Attributes</u>	<u>User Attributes</u>
7405	IDENTITY NUMBER QUALIFIER	M an..3	M
	BJ Serial shipping container code		
	BN Serial number		
	EE Engine number		
	VV Vehicle identity number		
C208	IDENTITY NUMBER RANGE	M	M
	7402 Identity number	M an..35	M
	7402 Identity number	C an..35	O
C208	IDENTITY NUMBER RANGE	C	O
	7402 Identity number	M an..35	M
	7402 Identity number	C an..35	O
C208	IDENTITY NUMBER RANGE	C	O
	7402 Identity number	M an..35	M
	7402 Identity number	C an..35	O
C208	IDENTITY NUMBER RANGE	C	O
	7402 Identity number	M an..35	M
	7402 Identity number	C an..35	O
C208	IDENTITY NUMBER RANGE	C	O
	7402 Identity number	M an..35	M
	7402 Identity number	C an..35	O

Group: **LOC** Segment Group 32: Place/Location Identification
Position: 1270
Group: Segment Group 25 (Line Item) Conditional (Optional)
Level: 2
Usage: Conditional (Optional)
Max Use: 9999
Purpose: A group of segments specifying destination and quantity details for consignments involving multi-destination deliveries for a specified line item.

Segment Summary

	<u>Pos. No.</u>	<u>Seg. ID</u>	<u>Name</u>	<u>Req. Des.</u>	<u>Max. Use</u>	<u>Group: Repeat</u>
M	1280	LOC	Place/Location Identification	M	1	
O	1290	QTY	Quantity	C	100	
O	1300	DTM	Date/Time/Period	C	5	

Segment: **LOC** Place/Location Identification
Position: 1280 (Trigger Segment)
Group: SG25-SG32
Level: 2
Usage: Mandatory
Max Use: 1
Purpose: A segment indicating the location to which part of the consignment has been delivered.
Notes: The LOC/QTY/DTM segment group (SG29) at line level is used to identify points within a delivery address where deliveries take place, the delivery quantities, and the dates of those deliveries.
 The sum of all the QTY's detailed in this segment group must equal the total quantity delivered in the QTY at line level.
 Example :
 LOC+7+4012345500000::9'
 LOC+11+124/35''

Data Element Summary

Data Element	Component Element Name	Base Attributes	User Attributes
3227	PLACE/LOCATION QUALIFIER	M an..3	M
	Refer to D.96A Data Element Dictionary for acceptable code values.		
C517	LOCATION IDENTIFICATION	C	A
	3225 Place/location identification	C an..25	A
	1131 Code list qualifier	C an..3	N
	3055 Code list responsible agency, coded	C an..3	D
	Refer to D.96A Data Element Dictionary for acceptable code values.		
	3224 Place/location	C an..70	O
C519	RELATED LOCATION ONE IDENTIFICATION	C	O
	3223 Related place/location one identification	C an..25	O
	1131 Code list qualifier	C an..3	N
	3055 Code list responsible agency, coded	C an..3	D
	Refer to D.96A Data Element Dictionary for acceptable code values.		
	3222 Related place/location one	C an..70	O
C553	RELATED LOCATION TWO IDENTIFICATION	C	N
	3233 Related place/location two identification	C an..25	N
	1131 Code list qualifier	C an..3	N
	3055 Code list responsible agency, coded	C an..3	N
	3232 Related place/location two	C an..70	N
5479	RELATION, CODED	C an..3	N

Segment: **QTY** Quantity

Position: 1290

Group: SG25-SG32

Level: 3

Usage: Conditional (Optional)

Max Use: 100

Purpose: A segment specifying the quantity delivered to the identified location.

Notes: This QTY segment is used to specify the delivery quantity to the location identified in the preceding LOC segment.

The total of all QTY segments in SG29 should equal the value in the QTY at line level.

Example :

QTY+131:12'

Dependency Notes :

DE 6411: This DE is only used if the product being invoiced is of variable quantity.

Data Element Summary

<u>Data Element</u>	<u>Component Element Name</u>	<u>Base Attributes</u>	<u>User Attributes</u>
C186	QUANTITY DETAILS	M	M
	6063 Quantity qualifier	M an..3	M
	Refer to D.96A Data Element Dictionary for acceptable code values.		
	6060 Quantity	M n..15	M
	6411 Measure unit qualifier	C an..3	D
	Refer to D.96A Data Element Dictionary for acceptable code values.		

Segment: **DTM** Date/Time/Period

Position: 1300

Group: SG25-SG32

Level: 3

Usage: Conditional (Optional)

Max Use: 5

Purpose: A segment specifying the dates and/or times that the delivery has been made.

Notes: This DTM segment is used to specify the date/time on which the delivery took (will take) place to the location identified in LOC (SG29).

Example :

DTM+35:19930602:102'

Data Element Summary

<u>Data Element</u>	<u>Component Element Name</u>	<u>Base Attributes</u>	<u>User Attributes</u>
C507	DATE/TIME/PERIOD	M	M
	2005 Date/time/period qualifier	M an..3	M
	35 Delivery date/time, actual		
	2380 Date/time/period	C an..35	R
	2379 Date/time/period format qualifier	C an..3	R

Refer to D.96A Data Element Dictionary for acceptable code values.

Group: **TAX** Segment Group 33: Duty/Tax/Fee Details
Position: 1310
Group: Segment Group 25 (Line Item) Conditional (Optional)
Level: 2
Usage: Conditional (Optional)
Max Use: 99
Purpose: A group of segments specifying tax related information for the line item, and when necessary, the location(s) to which that tax information relates.

Segment Summary

	<u>Pos. No.</u>	<u>Seg. ID</u>	<u>Name</u>	<u>Req. Des.</u>	<u>Max. Use</u>	<u>Group: Repeat</u>
M	1320	TAX	Duty/Tax/Fee Details	M	1	
O	1330	MOA	Monetary Amount	C	1	

Segment: **TAX** Duty/Tax/Fee Details
Position: 1320 (Trigger Segment)
Group: SG25-SG33
Level: 2
Usage: Mandatory
Max Use: 1
Purpose: A segment specifying a tax type, category and rate, or exemption, relating to the line item.

Notes: This segment is used to specify the tax details for the line item being invoiced.

Example :

TAX+7+VAT+++:::16+S'

Dependency Notes :

DE C241 and 5305: Tax types and categories will differ from country to country. They are to be defined by national guidelines.

Data Element Summary

<u>Data Element</u>	<u>Component Element Name</u>	<u>Base Attributes</u>	<u>User Attributes</u>
5283	DUTY/TAX/FEE FUNCTION QUALIFIER	M an..3	M
	Refer to D.96A Data Element Dictionary for acceptable code values.		
C241	DUTY/TAX/FEE TYPE	C	D
	5153 Duty/tax/fee type, coded	C an..3	O
	Refer to D.96A Data Element Dictionary for acceptable code values.		
	1131 Code list qualifier	C an..3	O
	Refer to D.96A Data Element Dictionary for acceptable code values.		
	3055 Code list responsible agency, coded	C an..3	D
	Refer to D.96A Data Element Dictionary for acceptable code values.		

C533	5152	Duty/tax/fee type	C	an..35	O
		DUTY/TAX/FEE ACCOUNT DETAIL	C		O
	5289	Duty/tax/fee account identification	M	an..6	M
	1131	Code list qualifier	C	an..3	O
		Refer to D.96A Data Element Dictionary for acceptable code values.			
	3055	Code list responsible agency, coded	C	an..3	D
		Refer to D.96A Data Element Dictionary for acceptable code values.			
5286		DUTY/TAX/FEE ASSESSMENT BASIS	C	an..15	O
C243		DUTY/TAX/FEE DETAIL	C		A
	5279	Duty/tax/fee rate identification	C	an..7	O
	1131	Code list qualifier	C	an..3	O
		Refer to D.96A Data Element Dictionary for acceptable code values.			
	3055	Code list responsible agency, coded	C	an..3	D
		Refer to D.96A Data Element Dictionary for acceptable code values.			
	5278	Duty/tax/fee rate	C	an..17	R
		The actual rate of tax/duty.			
	5273	Duty/tax/fee rate basis identification	C	an..12	O
		Refer to D.96A Data Element Dictionary for acceptable code values.			
	1131	Code list qualifier	C	an..3	O
		Refer to D.96A Data Element Dictionary for acceptable code values.			
	3055	Code list responsible agency, coded	C	an..3	D
		Refer to D.96A Data Element Dictionary for acceptable code values.			
5305		DUTY/TAX/FEE CATEGORY, CODED	C	an..3	D
		Refer to D.96A Data Element Dictionary for acceptable code values.			
3446		PARTY TAX IDENTIFICATION NUMBER	C	an..20	O

Segment: **MOA** Monetary Amount

Position: 1330

Group: SG25-SG33

Level: 3

Usage: Conditional (Optional)

Max Use: 1

Purpose: A segment specifying the amount for the identified tax/fee.

Notes: This segment is used to specify in monetary terms the amount of tax due on the current line item.

Example :

MOA+124:21.80'

MOA+B01:21.80' Subset BMF100 only

21% (expressed in TAX segment) of 580 (expressed in MOA (SG23) segment) = 21.80.

Data Element Summary

<u>Data Element</u>	<u>Component Element</u>	<u>Name</u>	<u>Base Attributes</u>	<u>User Attributes</u>
C516		MONETARY AMOUNT	M	M
	5025	Monetary amount type qualifier	M an..3	M
		Refer to D.96A Data Element Dictionary for acceptable code values.		
	5004	Monetary amount	C n..18	R
	6345	Currency, coded	C an..3	N
		ISO 4217 three alpha code		
	6343	Currency qualifier	C an..3	N
	4405	Status, coded	C an..3	N

Group: **NAD** Segment Group 34: Name and Address
Position: 1350
Group: Segment Group 25 (Line Item) Conditional (Optional)
Level: 2
Usage: Conditional (Optional)
Max Use: 20
Purpose: A group of segments identifying the parties with associated information, relevant to the line item only.

Segment Summary

	<u>Pos. No.</u>	<u>Seg. ID</u>	<u>Name</u>	<u>Req. Des.</u>	<u>Max. Use</u>	<u>Group: Repeat</u>
M	1360	NAD	Name and Address	M	1	
	1380		Segment Group 35: Reference	C		5

Segment: **NAD** Name and Address
Position: 1360 (Trigger Segment)
Group: SG25-SG34
Level: 2
Usage: Mandatory
Max Use: 1
Purpose: A segment identifying names and addresses of the parties, in coded or clear form, and their functions relevant to the line item.

It is recommended that where possible only the coded form of the party ID should be specified e.g. The Buyer and Seller are known to each other, thus only the coded ID is required, but the Consignee or Delivery address may vary and would have to be clearly specified, preferably in structured format.

Notes: The NAD segment at line level is used to identify differences to the addresses specified in the header level NAD, e.g., a different invoice or delivery address, which are valid only for the current line item.

Example :

NAD+DP+5412345000013::9'

Dependency Notes :

The following composites and data elements are only used when a coded name and address can not be used. The affected composites and data elements are as follows:

NAD+CN+00999000::5+ Adient J.C.A.E.:Adient A.E.:18 CHAUSSEE JULES CESAR:95520 OSNY FRANCE+Adient J.C.A.E.++++FR'

C080 - C059 - 3164 - 3229 - 3251 - 3207

Data Element Summary

Data Element	Component Element	Name	Base Attributes	User Attributes
3035		PARTY QUALIFIER	M an..3	M
		Refer to D.96A Data Element Dictionary for acceptable code values.		
C082		PARTY IDENTIFICATION DETAILS	C	A
	3039	Party id. identification	M an..35	M
	1131	Code list qualifier	C an..3	N
	3055	Code list responsible agency, coded	C an..3	R
C058		NAME AND ADDRESS	C	N
	3124	Name and address line	M an..35	N
	3124	Name and address line	C an..35	N
	3124	Name and address line	C an..35	N
	3124	Name and address line	C an..35	N
	3124	Name and address line	C an..35	N
C080		PARTY NAME	C	D
	3036	Party name	M an..35	M
		Party Name in clear text.		
	3036	Party name	C an..35	O
	3036	Party name	C an..35	O
	3036	Party name	C an..35	O
	3036	Party name	C an..35	O
	3045	Party name format, coded	C an..3	O
		Refer to D.96A Data Element Dictionary for acceptable code values.		
C059		STREET	C	D
	3042	Street and number/p.o. box	M an..35	M
		Building Name/Number and Street		
	3042	Street and number/p.o. box	C an..35	O
		Name and/or P.O. Box.		
	3042	Street and number/p.o. box	C an..35	O
	3042	Street and number/p.o. box	C an..35	O
3164		CITY NAME	C an..35	M

	City/Town name, clear text			
3229	COUNTRY SUB-ENTITY IDENTIFICATION	C	an..9	D
	County/State, clear text			
3251	POSTCODE IDENTIFICATION	C	an..9	D
	Postal Code			
3207	COUNTRY, CODED	C	an..3	M
	ISO 3166 two alpha code			

Refer to D.96A Data Element Dictionary for acceptable code values.

Group: **RFF** Segment Group 35: Reference
Position: 1380
Group: Segment Group 34 (Name and Address) Conditional (Optional)
Level: 3
Usage: Conditional (Optional)
Max Use: 5
Purpose: A group of segment for giving references only relevant to the specified party rather than the whole line item.

Segment Summary

	<u>Pos. No.</u>	<u>Seg. ID</u>	<u>Name</u>	<u>Req. Des.</u>	<u>Max. Use</u>	<u>Group: Repeat</u>
M	1390	RFF	Reference	M	1	

Segment: **RFF** Reference
Position: 1390 (Trigger Segment)
Group: SG25-SG34-SG35
Level: 3
Usage: Mandatory
Max Use: 1
Purpose: A segment identifying the reference by its number and where appropriate a line number within a document.

Notes: This segment is used to specify references related to the trading party identified in the NAD at line level.

Example:
 RFF+VA:VR85231142'

Data Element Summary

<u>Data Element</u>	<u>Component Element</u>	<u>Name</u>	<u>Base Attributes</u>	<u>User Attributes</u>
C506		REFERENCE	M	M
	1153	Reference qualifier	M an..3	M
		API		Additional party identification (EAN Code)
		GN		Government reference number
		VA		VAT registration number
		XA		Company/place registration number
	1154	Reference number	C an..35	R
	1156	Line number	C an..6	N
	4000	Reference version number	C an..35	N

Group: **ALC** Segment Group 38: Allowance or Charge
Position: 1470
Group: Segment Group 25 (Line Item) Conditional (Optional)
Level: 2
Usage: Conditional (Optional)
Max Use: 15
Purpose: A group of segments specifying allowances and charges for the line item where this is different to or not specified within the heading section.

Segment Summary

	Pos. No.	Seg. ID	Name	Req. Des.	Max. Use	Group: Repeat
M	1480	ALC	Allowance or Charge	M	1	
O	1490	ALI	Additional Information	C	5	
O	1500	DTM	Date/Time/Period	C	5	
	1510		Segment Group 39: Quantity	C		1
	1540		Segment Group 40: Percentage Details	C		1
	1570		Segment Group 41: Monetary Amount	C		2
	1600		Segment Group 42: Rate Details	C		1
	1630		Segment Group 43: Duty/Tax/Fee Details	C		5

Segment: **ALC** Allowance or Charge
Position: 1480 (Trigger Segment)
Group: SG25-SG38
Level: 2
Usage: Mandatory
Max Use: 1
Purpose: A segment identifying the charge or allowance and, where necessary its calculation sequence.

Notes: This segment is used to specify any allowances or charges which are due on the line item being invoiced.

DE 1227: The calculation sequence indicator is used when multiple allowances and/or charges are applicable. If various allowances and/or charges percentages, quantities, monetary amounts, or, rates are applicable to the same base price, then the calculation sequence indicator will always equal one. If the various allowances and/or charges are applied against a fluctuating price (constantly changing because of the application of other allowances and/or charges) then the sequence of calculation is indicated using this data element.

Example :

ALC+A+++1'

Dependency Notes :

DE 4471: This data element is only used if the value in DE 5463 is 'C', charge.

DE 1227: If the allowance or charge is not to be applied against a fixed price then the calculation sequence indicator must be included.

DE C214: This composite is only included if the buyer knows the type of allowance or charge and is agreed between trading partners in their interchange agreement.

Data Element Summary

<u>Data Element</u>	<u>Component Element Name</u>	<u>Base Attributes</u>	<u>User Attributes</u>
5463	ALLOWANCE OR CHARGE QUALIFIER Refer to D.96A Data Element Dictionary for acceptable code values.	M an..3	M
C552	ALLOWANCE/CHARGE INFORMATION	C	O
	1230 Allowance or charge number	C an..35	O
	5189 Charge/allowance description, coded Refer to D.96A Data Element Dictionary for acceptable code values.	C an..3	O
4471	SETTLEMENT, CODED Refer to D.96A Data Element Dictionary for acceptable code values.	C an..3	O
1227	CALCULATION SEQUENCE INDICATOR, CODED Refer to D.96A Data Element Dictionary for acceptable code values.	C an..3	D
C214	SPECIAL SERVICES IDENTIFICATION	C	D
	7161 Special services, coded	C an..3	R
	PC Packing		
	FC Freight charge		
	ABK Miscellaneous		
	ACC Miscellaneous setting costs (tooling)		
	ACK Polishing		
	ACS Fitting surcharge		
	Refer to D.96A Data Element Dictionary for acceptable code values.		
	1131 Code list qualifier Refer to D.96A Data Element Dictionary for acceptable code values.	C an..3	O
	3055 Code list responsible agency, coded Refer to D.96A Data Element Dictionary for acceptable code values.	C an..3	D
	7160 Special service	C an..35	O
	7160 Special service	C an..35	O

Segment: **ALI** Additional Information
Position: 1490
Group: SG25-SG38
Level: 3
Usage: Conditional (Optional)
Max Use: 5
Purpose: A segment indicating that allowance or charge specified is subject to special conditions owing to origin, customs preference or commercial factors.
Notes: The ALI segment is used to indicate any special requirements applicable to the allowances or charges detailed at line level.
 Example :
 ALI+DE'

Data Element Summary			
Data Element	Component Element Name	Base Attributes	User Attributes
3239	COUNTRY OF ORIGIN, CODED	C an..3	O
	Use ISO 3165 code		
	Refer to D.96A Data Element Dictionary for acceptable code values.		
9213	TYPE OF DUTY REGIME, CODED	C an..3	O
	Refer to D.96A Data Element Dictionary for acceptable code values.		
4183	SPECIAL CONDITIONS, CODED	C an..3	O
	Refer to D.96A Data Element Dictionary for acceptable code values.		
4183	SPECIAL CONDITIONS, CODED	C an..3	O
	Refer to D.96A Data Element Dictionary for acceptable code values.		
4183	SPECIAL CONDITIONS, CODED	C an..3	O
	Refer to D.96A Data Element Dictionary for acceptable code values.		
4183	SPECIAL CONDITIONS, CODED	C an..3	O
	Refer to D.96A Data Element Dictionary for acceptable code values.		
4183	SPECIAL CONDITIONS, CODED	C an..3	O
	Refer to D.96A Data Element Dictionary for acceptable code values.		

Segment: **DTM** Date/Time/Period
Position: 1500
Group: SG25-SG38
Level: 3
Usage: Conditional (Optional)
Max Use: 5
Purpose: To specify date, and/or time, or period.

Notes: Segment Notes:

This segment is used to provide any dates or periods related to the allowances or charges of the current line item.

Example:
 DTM+140:19990930:102'

Data Element Summary

<u>Data Element</u>	<u>Component Element</u>	<u>Name</u>	<u>Base Attributes</u>	<u>User Attributes</u>
C507		DATE/TIME/PERIOD	M	M
	2005	Date/time/period qualifier	M an..3	M
		Refer to D.96A Data Element Dictionary for acceptable code values.		
	2380	Date/time/period	C an..35	R
	2379	Date/time/period format qualifier	C an..3	R
		Refer to D.96A Data Element Dictionary for acceptable code values.		

Group: **QTY** Segment Group 39: Quantity
Position: 1510
Group: Segment Group 38 (Allowance or Charge) Conditional (Optional)
Level: 3
Usage: Conditional (Optional)
Max Use: 1
Purpose: A group of segments specifying the quantity of the allowance or charge with its measure unit specifier. A range to which the allowance or charge applies may be specified e.g. An allowance of a free quantity of 20 pieces may be specified if the goods quantity ordered is greater than 1000 pieces.

Segment Summary

	<u>Pos. No.</u>	<u>Seg. ID</u>	<u>Name</u>	<u>Req. Des.</u>	<u>Max. Use</u>	<u>Group: Repeat</u>
M	1520	QTY	Quantity	M	1	

Segment: **QTY** Quantity
Position: 1520 (Trigger Segment)
Group: SG25-SG38-SG39
Level: 3
Usage: Mandatory
Max Use: 1
Purpose: A segment identifying the type of quantity and the quantity related to the allowance or charge.

Notes: The QTY segment within the ALC segment group (SG35) is used to specify quantity upon which discounts are applicable for the line item being invoiced.

Example :

QTY+1:12'

Dependency Notes :

DE 6411: This DE is only used if the product being invoiced is of variable quantity.

Data Element Summary

<u>Data Element</u>	<u>Component Element Name</u>	<u>Base Attributes</u>	<u>User Attributes</u>
C186	QUANTITY DETAILS	M	M
	6063 Quantity qualifier	M an..3	M
	Refer to D.96A Data Element Dictionary for acceptable code values.		
	6060 Quantity	M n..15	M
	6411 Measure unit qualifier	C an..3	D
	Refer to D.96A Data Element Dictionary for acceptable code values.		

Group: **PCD** Segment Group 40: Percentage Details
Position: 1540
Group: Segment Group 38 (Allowance or Charge) Conditional (Optional)
Level: 3
Usage: Conditional (Optional)
Max Use: 1
Purpose: A group of segments specifying the percentage for the allowance or charge, e.g. The allowance/charge amount is calculated as 5% of the goods value or a price reduction of 5% may be specified if the goods quantity ordered is within the range 5 tons to 10 tons.

Segment Summary

	<u>Pos. No.</u>	<u>Seg. ID</u>	<u>Name</u>	<u>Req. Des.</u>	<u>Max. Use</u>	<u>Group: Repeat</u>
M	1550	PCD	Percentage Details	M	1	

Segment: **PCD** Percentage Details
Position: 1550 (Trigger Segment)
Group: SG25-SG38-SG40
Level: 3
Usage: Mandatory
Max Use: 1
Purpose: A segment identifying the percentage and the percentage basis for the calculation of the allowance or charge.

Notes: The PCD segment within the ALC segment group (SG35) is used to specify percentage discounts for the line item being invoiced.

Example :
 PCD+1:0.75'

Data Element Summary

<u>Data Element</u>	<u>Component Element Name</u>	<u>Base Attributes</u>	<u>User Attributes</u>
C501	PERCENTAGE DETAILS	M	M
	5245 Percentage qualifier	M an..3	M
	Refer to D.96A Data Element Dictionary for acceptable code values.		
	5482 Percentage	C n..10	R
	5249 Percentage basis, coded	C an..3	O
	Refer to D.96A Data Element Dictionary for acceptable code values.		
	1131 Code list qualifier	C an..3	N
	3055 Code list responsible agency, coded	C an..3	D
	Refer to D.96A Data Element Dictionary for acceptable code values.		

Group: **MOA** Segment Group 41: Monetary Amount
Position: 1570
Group: Segment Group 38 (Allowance or Charge) Conditional (Optional)
Level: 3
Usage: Conditional (Optional)
Max Use: 2
Purpose: A group of segments specifying a monetary amount for an allowance or charge. A range to which the allowance or charge applies can be specified, e.g. an allowance of 5000 EUR may be specified if goods value ordered is greater than 100000 EUR.

Segment Summary

	<u>Pos. No.</u>	<u>Seg. ID</u>	<u>Name</u>	<u>Req. Des.</u>	<u>Max. Use</u>	<u>Group: Repeat</u>
M	1580	MOA	Monetary Amount	M	1	

Segment: **MOA** Monetary Amount
Position: 1580 (Trigger Segment)
Group: SG25-SG38-SG41
Level: 3
Usage: Mandatory
Max Use: 1
Purpose: A segment identifying the monetary amount for the allowance or charge.
Notes: The MOA segment within the ALC segment group (SG35) is used to specify monetary discounts for the line item being invoiced.

Example :

MOA+204:12.20'

Data Element Summary

<u>Data Element</u>	<u>Component Element Name</u>	<u>Base Attributes</u>	<u>User Attributes</u>
C516	MONETARY AMOUNT	M	M
	5025 Monetary amount type qualifier	M an..3	M
	Refer to D.96A Data Element Dictionary for acceptable code values.		
	5004 Monetary amount	C n..18	R
	6345 Currency, coded	C an..3	N
	ISO 4217 three alpha code		
	6343 Currency qualifier	C an..3	N
	4405 Status, coded	C an..3	N

Group: **RTE** Segment Group 42: Rate Details
Position: 1600
Group: Segment Group 38 (Allowance or Charge) Conditional (Optional)
Level: 3
Usage: Conditional (Optional)
Max Use: 1
Purpose: A group of segments specifying the rate per unit and basis to which the allowance or charge applies, e.g. The allowance/charge amount is 3 EUR per 10 tons.

Segment Summary

	<u>Pos. No.</u>	<u>Seg. ID</u>	<u>Name</u>	<u>Req. Des.</u>	<u>Max. Use</u>	<u>Group: Repeat</u>
M	1610	RTE	Rate Details	M	1	

Segment: **RTE** Rate Details
Position: 1610 (Trigger Segment)
Group: SG25-SG38-SG42
Level: 3
Usage: Mandatory
Max Use: 1
Purpose: A segment specifying the rate per unit and the basis for calculation.
Notes: The RTE segment within the ALC segment group (SG35) is used to specify monetary discounts for the line item being invoiced.
 Example :
 RTE+1:1.25'

Data Element Summary

<u>Data Element</u>	<u>Component Element</u>	<u>Name</u>	<u>Base Attributes</u>	<u>User Attributes</u>
C128		RATE DETAILS	M	M
	5419	Rate type qualifier	M an..3	M
		Refer to D.96A Data Element Dictionary for acceptable code values.		
	5420	Rate per unit	M n..15	M
	5284	Unit price basis	C n..9	O
	6411	Measure unit qualifier	C an..3	O
		Refer to D.96A Data Element Dictionary for acceptable code values.		

Group: **TAX** Segment Group 43: Duty/Tax/Fee Details
Position: 1630
Group: Segment Group 38 (Allowance or Charge) Conditional (Optional)
Level: 3
Usage: Conditional (Optional)
Max Use: 5
Purpose: A group of segments specifying tax related information for the allowance or charge and, when necessary.

Segment Summary

	<u>Pos. No.</u>	<u>Seg. ID</u>	<u>Name</u>	<u>Req. Des.</u>	<u>Max. Use</u>	<u>Group: Repeat</u>
M	1640	TAX	Duty/Tax/Fee Details	M	1	
O	1650	MOA	Monetary Amount	C	1	

Segment: **TAX** Duty/Tax/Fee Details
Position: 1640 (Trigger Segment)
Group: SG25-SG38-SG43
Level: 3
Usage: Mandatory
Max Use: 1
Purpose: A segment specifying the tax type, category, and rate, or exemption, related to the allowance or charge.

Notes: The TAX segment in SG 35 is used to identify any taxes or duties which are due on the allowances or charges which have been specified in the details sections of SG 35.

Example :

TAX+7+VAT+++:::16+S'

Dependency Notes :

DE C241 and 5305: Tax types and categories will differ from country to country. They are to be defined by national guidelines.

Data Element Summary

<u>Data Element</u>	<u>Component Element</u>	<u>Name</u>	<u>Base Attributes</u>	<u>User Attributes</u>
5283		DUTY/TAX/FEE FUNCTION QUALIFIER	M an..3	M
		Refer to D.96A Data Element Dictionary for acceptable code values.		
C241		DUTY/TAX/FEE TYPE	C	D
	5153	Duty/tax/fee type, coded	C an..3	O
		Refer to D.96A Data Element Dictionary for acceptable code values.		
	1131	Code list qualifier	C an..3	O
		Refer to D.96A Data Element Dictionary for acceptable code values.		

	3055	Code list responsible agency, coded	C	an..3	D
		Refer to D.96A Data Element Dictionary for acceptable code values.			
C533	5152	Duty/tax/fee type	C	an..35	O
		DUTY/TAX/FEE ACCOUNT DETAIL	C		O
	5289	Duty/tax/fee account identification	M	an..6	M
	1131	Code list qualifier	C	an..3	O
		Refer to D.96A Data Element Dictionary for acceptable code values.			
	3055	Code list responsible agency, coded	C	an..3	D
		Refer to D.96A Data Element Dictionary for acceptable code values.			
5286		DUTY/TAX/FEE ASSESSMENT BASIS	C	an..15	O
C243		DUTY/TAX/FEE DETAIL	C		A
	5279	Duty/tax/fee rate identification	C	an..7	O
	1131	Code list qualifier	C	an..3	O
		Refer to D.96A Data Element Dictionary for acceptable code values.			
	3055	Code list responsible agency, coded	C	an..3	D
		Refer to D.96A Data Element Dictionary for acceptable code values.			
	5278	Duty/tax/fee rate	C	an..17	R
		The actual rate of tax/duty.			
	5273	Duty/tax/fee rate basis identification	C	an..12	O
		Refer to D.96A Data Element Dictionary for acceptable code values.			
	1131	Code list qualifier	C	an..3	O
		Refer to D.96A Data Element Dictionary for acceptable code values.			
	3055	Code list responsible agency, coded	C	an..3	D
		Refer to D.96A Data Element Dictionary for acceptable code values.			
5305		DUTY/TAX/FEE CATEGORY, CODED	C	an..3	D
		Refer to D.96A Data Element Dictionary for acceptable code values.			
3446		PARTY TAX IDENTIFICATION NUMBER	C	an..20	O

Segment: **MOA** Monetary Amount
Position: 1650
Group: SG25-SG38-SG43
Level: 4
Usage: Conditional (Optional)
Max Use: 1
Purpose: A segment specifying the amount for the allowance or charge.

Notes: This segment is used to specify in monetary terms the amount of tax due for the allowances and charges for the current line item.

Example :

MOA+124:21.80'

Data	Component	Data Element Summary	Base	User
------	-----------	----------------------	------	------

<u>Element</u>	<u>Element</u>	<u>Name</u>	<u>Attributes</u>	<u>Attributes</u>
C516		MONETARY AMOUNT	M	M
	5025	Monetary amount type qualifier	M an..3	M
		Refer to D.96A Data Element Dictionary for acceptable code values.		
	5004	Monetary amount	C n..18	R
	6345	Currency, coded	C an..3	N
		ISO 4217 three alpha code		
	6343	Currency qualifier	C an..3	N
	4405	Status, coded	C an..3	N

Group: **TDT** Segment Group 44: Details of Transport
Position: 1660
Group: Segment Group 25 (Line Item) Conditional (Optional)
Level: 2
Usage: Conditional (Optional)
Max Use: 10
Purpose: A group of segments identifying the mode and means of transport, location and relevant dates and times for transportation, relating to the line item, where this is different to or not specified within the heading section.

Segment Summary

	<u>Pos. No.</u>	<u>Seg. ID</u>	<u>Name</u>	<u>Req. Des.</u>	<u>Max. Use</u>	<u>Group: Repeat</u>
N	1670	TDT	Details of Transport	M	1	

Segment: **TDT** Details of Transport
Position: 1670 (Trigger Segment)
Group: SG25-SG44
Level: 2
Usage: Mandatory
Max Use: 1
Purpose: A segment specifying the mode, means and identification of the transport for the goods in the line item.

Notes: This segment is used to specify the delivery transport means for the product being invoiced. This segment is only used if the transport means differ from those specified in the message header.

Example :

TDT+20++30+31'

Dependency Notes :

Data Elements 8179 and 8178 are only used when the type of transport must be specifically identified, that is, a generic description such as road transport is unsuitable.

Data Element Summary				
Data Element	Component Element Name		Base Attributes	User Attributes
8051		TRANSPORT STAGE QUALIFIER	M an..3	M
		Refer to D.96A Data Element Dictionary for acceptable code values.		
8028		CONVEYANCE REFERENCE NUMBER	C an..17	O
		Reference number covering the transport		
C220		MODE OF TRANSPORT	C	A
	8067	Mode of transport, coded	C an..3	R
		Refer to D.96A Data Element Dictionary for acceptable code values.		
	8066	Mode of transport	C an..17	N
C228		TRANSPORT MEANS	C	O
	8179	Type of means of transport identification	C an..8	D
		Refer to D.96A Data Element Dictionary for acceptable code values.		
	8178	Type of means of transport	C an..17	D
C040		CARRIER	C	O
	3127	Carrier identification	C an..17	A
	1131	Code list qualifier	C an..3	O
		Refer to D.96A Data Element Dictionary for acceptable code values.		
	3055	Code list responsible agency, coded	C an..3	D
		Refer to D.96A Data Element Dictionary for acceptable code values.		
	3128	Carrier name	C an..35	O
8101		TRANSIT DIRECTION, CODED	C an..3	O
		Refer to D.96A Data Element Dictionary for acceptable code values.		
C401		EXCESS TRANSPORTATION INFORMATION	C	N
	8457	Excess transportation reason, coded	M an..3	N
	8459	Excess transportation responsibility, coded	M an..3	N
	7130	Customer authorization number	C an..17	N
C222		TRANSPORT IDENTIFICATION	C	O
	8213	Id. of means of transport identification	C an..9	O
	1131	Code list qualifier	C an..3	O
		Refer to D.96A Data Element Dictionary for acceptable code values.		
	3055	Code list responsible agency, coded	C an..3	D
		Refer to D.96A Data Element Dictionary for acceptable code values.		
	8212	Id. of the means of transport	C an..35	R
		Vehicle license plate/Aircraft Number		
	8453	Nationality of means of transport, coded	C an..3	O
		ISO 3166 two alpha code		
		Refer to D.96A Data Element Dictionary for acceptable code values.		
8281		TRANSPORT OWNERSHIP, CODED	C an..3	N

Group: **TOD** Segment Group 46: Terms of Delivery or Transport
Position: 1710
Group: Segment Group 25 (Line Item) Conditional (Optional)
Level: 2
Usage: Conditional (Optional)
Max Use: 5
Purpose: A group of segments indicating the terms of delivery for the line item where this is different to or not specified within the heading section.

Segment Summary

	<u>Pos. No.</u>	<u>Seg. ID</u>	<u>Name</u>	<u>Req. Des.</u>	<u>Max. Use</u>	<u>Group: Repeat</u>
N	1720	TOD	Terms of Delivery or Transport	M	1	
O	1730	LOC	Place/Location Identification	C	2	

Segment: **TOD** Terms of Delivery or Transport
Position: 1720 (Trigger Segment)
Group: SG25-SG46
Level: 2
Usage: Mandatory
Max Use: 1
Purpose: A segment identifying the delivery terms used. e.g. INCOTERMS, code could be used to specify the delivery terms.
Notes: Segment Notes:

This segment is used to specify the terms of delivery for the current line item.

Example:
TOD+3++CIF'

Dependency Notes:

Data elements 1131 and 3055 are only used if specific terms of delivery codes, which are outside those recommended by EDIFACT, are being used

Data Element Summary

<u>Data Element</u>	<u>Component Element Name</u>	<u>Base Attributes</u>	<u>User Attributes</u>
4055	TERMS OF DELIVERY OR TRANSPORT FUNCTION, CODED	C an..3	R
	Refer to D.96A Data Element Dictionary for acceptable code values.		
4215	TRANSPORT CHARGES METHOD OF PAYMENT, CODED	C an..3	O
	Refer to D.96A Data Element Dictionary for acceptable code values.		
C100	TERMS OF DELIVERY OR TRANSPORT	C	A
	4053 Terms of delivery or transport, coded	C an..3	R

	Refer to D.96A Data Element Dictionary for acceptable code values.		
1131	Code list qualifier	C	an..3 O
	Refer to D.96A Data Element Dictionary for acceptable code values.		
3055	Code list responsible agency, coded	C	an..3 D
	Refer to D.96A Data Element Dictionary for acceptable code values.		
4052	Terms of delivery or transport	C	an..70 O
4052	Terms of delivery or transport	C	an..70 O

Segment: LOC Place/Location Identification

Position: 1730
Group: SG25-SG46
Level: 3
Usage: Conditional (Optional)
Max Use: 2

Purpose: A segment identifying locations relevant to the delivery terms specified in the TOD segment.

Notes: Segment Notes:

This segment is used to identify the location where the terms of delivery apply.

Example: LOC+1+BE-BRU'

Data Element Summary

<u>Data Element</u>	<u>Component Element Name</u>	<u>Base Attributes</u>	<u>User Attributes</u>
3227	PLACE/LOCATION QUALIFIER	M an..3	M
	Refer to D.96A Data Element Dictionary for acceptable code values.		
C517	LOCATION IDENTIFICATION	C	A
	3225 Place/location identification	C an..25	O
	ISO 3166 two alpha code		
	1131 Code list qualifier	C an..3	O
	Refer to D.96A Data Element Dictionary for acceptable code values.		
	3055 Code list responsible agency, coded	C an..3	D
	Refer to D.96A Data Element Dictionary for acceptable code values.		
	3224 Place/location	C an..70	O
C519	RELATED LOCATION ONE IDENTIFICATION	C	N
	3223 Related place/location one identification	C an..25	N
	1131 Code list qualifier	C an..3	N
	3055 Code list responsible agency, coded	C an..3	N
	3222 Related place/location one	C an..70	N
C553	RELATED LOCATION TWO IDENTIFICATION	C	N
	3233 Related place/location two identification	C an..25	N
	1131 Code list qualifier	C an..3	N

	3055	Code list responsible agency, coded	C	an..3	N
	3232	Related place/location two	C	an..70	N
5479		RELATION, CODED	C	an..3	N

Segment: **UNS** Section Control
Position: 1790
Group:
Level: 0
Usage: Mandatory
Max Use: 1
Purpose: A service segment placed at the start of the summary section to avoid segment collision.
Notes: Segment to identify the break between the message detail and message trailer sections.
 Example :
 UNS+S'

Data Element Summary			
<u>Data Element</u>	<u>Component Element Name</u>	<u>Base Attributes</u>	<u>User Attributes</u>
0081	SECTION IDENTIFIER	M a1	M
	S		Detail/summary section separation

Segment: **CNT** Control Total
Position: 1800
Group:
Level: 1
Usage: Conditional (Optional)
Max Use: 10
Purpose: A segment by which control totals may be provided by the sender for checking by the receiver.

Notes: This is used to provide message control information for checking on the message receivers in-house system.

Example :

CNT+2:120'

Data Element Summary

<u>Data Element</u>	<u>Component Element Name</u>	<u>Base Attributes</u>	<u>User Attributes</u>
C270	CONTROL	M	M
	6069 Control qualifier	M an..3	M
	1 Total value of the quantity segments at line level in a message		
	2 Number of line items in message		
	7 Total gross weight		
	11 Total number of packages		
	15 Total consignment, cube		
	26 Total gross measurement/cube		
6066	Control value	M n..18	M
6411	Measure unit qualifier	C an..3	O

Refer to D.96A Data Element Dictionary for acceptable code values.

Group: **MOA** Segment Group 48: Monetary Amount
Position: 1810
Group:
Level: 1
Usage: Mandatory
Max Use: 100
Purpose: A group of segments giving total amounts for the whole invoice and - if relevant -detailing amounts pre-paid with relevant references and dates-

Segment Summary

	<u>Pos. No.</u>	<u>Seg. ID</u>	<u>Name</u>	<u>Req. Des.</u>	<u>Max. Use</u>	<u>Group: Repeat</u>
M	1820	MOA	Monetary Amount	M	1	
	1830		Segment Group 49: Reference	C		1

Segment: **MOA** Monetary Amount
Position: 1820 (Trigger Segment)
Group: SG48
Level: 1
Usage: Mandatory
Max Use: 1
Purpose: A segment giving the total amounts for the whole invoice message such as message monetary amount, message line item total amount, amount subject to payment discount, amount subject to tax, alternative currency total amount, total additional amount, sub-total amounts prepaid, total amount prepaid.

Notes: This occurrence of the MOA segment is used to detail prepaid amounts, or total monetary values due for the entire invoice.

Example :

MOA+86:45612.20'

Data Element Summary

<u>Data Element</u>	<u>Component Element</u>	<u>Name</u>	<u>Base Attributes</u>	<u>User Attributes</u>
C516		MONETARY AMOUNT	M	M
	5025	Monetary amount type qualifier	M an..3	M
		Refer to D.96A Data Element Dictionary for acceptable code values.		
	5004	Monetary amount	C n..18	R
	6345	Currency, coded	C an..3	O
		ISO 4217 three alpha code		
		Refer to D.96A Data Element Dictionary for acceptable code values.		
	6343	Currency qualifier	C an..3	O
		Refer to D.96A Data Element Dictionary for acceptable code values.		
	4405	Status, coded	C an..3	N

Group: **RFF** Segment Group 49: Reference
Position: 1830
Group: Segment Group 48 (Monetary Amount) Mandatory
Level: 2
Usage: Conditional (Optional)
Max Use: 1
Purpose: A group of segments for giving references and where necessary, their dates, relating e.g. amounts prepaid number.

Segment Summary

	<u>Pos. No.</u>	<u>Seg. ID</u>	<u>Name</u>	<u>Req. Des.</u>	<u>Max. Use</u>	<u>Group: Repeat</u>
N	1840	RFF	Reference	M	1	
O	1850	DTM	Date/Time/Period	C	5	

Segment: **RFF** Reference
Position: 1840 (Trigger Segment)
Group: SG48-SG49
Level: 2
Usage: Mandatory
Max Use: 1
Purpose: A segment identifying the reference by its number and where appropriate a line number within a document.

Notes: Segment to specify any references to cover the message totals information.

Example :

RFF+PQ:4452'

Data Element Summary

<u>Data Element</u>	<u>Component Element Name</u>	<u>Base Attributes</u>	<u>User Attributes</u>
C506	REFERENCE	M	M
	1153 Reference qualifier	M an..3	M
	Refer to D.96A Data Element Dictionary for acceptable code values.		
	1154 Reference number	C an..35	R
	1156 Line number	C an..6	N
	4000 Reference version number	C an..35	N

Segment: **DTM** Date/Time/Period
Position: 1850
Group: SG48-SG49
Level: 3
Usage: Conditional (Optional)
Max Use: 5
Purpose: A segment specifying the date/time related to the reference.

Notes: This DTM segment is used to date any references specified in the preceding RFF segment.

 Example :

 DTM+171:19930802:102'

Data Element Summary

Data Element	Component Element Name	Base Attributes	User Attributes
C507	DATE/TIME/PERIOD	M	M
	2005 Date/time/period qualifier	M an..3	M
	171 Reference date/time		
	2380 Date/time/period	C an..35	R
	2379 Date/time/period format qualifier	C an..3	R

Refer to D.96A Data Element Dictionary for acceptable code values.

Group: **TAX** Segment Group 50: Duty/Tax/Fee Details
Position: 1860
Group:
Level: 1
Usage: Conditional (Optional)
Max Use: 10
Purpose: A group of segments specifying taxes totals for the invoice.

Segment Summary

	Pos. No.	Seg. ID	Name	Req. Des.	Max. Use	Group: Repeat
M	1870	TAX	Duty/Tax/Fee Details	M	1	
O	1880	MOA	Monetary Amount	C	2	

Segment: **TAX** Duty/Tax/Fee Details
Position: 1870 (Trigger Segment)
Group: SG50
Level: 1
Usage: Mandatory
Max Use: 1
Purpose: A segment specifying the tax type to be summarized.
Notes: This segment is used to specify the total taxes or duties due on the complete invoice.

Example :

TAX+7+VAT+++:::16+S'

TAX+7+VAT+++:::7+S'

TAX+7+VAT+++:::15+S'

Three repeats of the segment indicates that there are three standard rates of VAT included in the invoice.

Dependency Notes :

DE C241 and 5305: Tax types and categories will differ from country to country. They are to be defined by national guidelines.

Data Element Summary

Data Element	Component Element Name	Base Attributes	User Attributes
5283	DUTY/TAX/FEE FUNCTION QUALIFIER	M an..3	M
	Refer to D.96A Data Element Dictionary for acceptable code values.		
C241	DUTY/TAX/FEE TYPE	C	D
	5153 Duty/tax/fee type, coded	C an..3	O
	Refer to D.96A Data Element Dictionary for acceptable code values.		
	1131 Code list qualifier	C an..3	O
	Refer to D.96A Data Element Dictionary for acceptable code values.		
	3055 Code list responsible agency, coded	C an..3	D
	Refer to D.96A Data Element Dictionary for acceptable code values.		
	5152 Duty/tax/fee type	C an..35	O
C533	DUTY/TAX/FEE ACCOUNT DETAIL	C	O
	5289 Duty/tax/fee account identification	M an..6	M
	1131 Code list qualifier	C an..3	O
	Refer to D.96A Data Element Dictionary for acceptable code values.		
	3055 Code list responsible agency, coded	C an..3	D
	Refer to D.96A Data Element Dictionary for acceptable code values.		
5286	DUTY/TAX/FEE ASSESSMENT BASIS	C an..15	O
C243	DUTY/TAX/FEE DETAIL	C	A
	5279 Duty/tax/fee rate identification	C an..7	O
	1131 Code list qualifier	C an..3	O

		Refer to D.96A Data Element Dictionary for acceptable code values.		
3055	Code list responsible agency, coded		C an..3	D
		Refer to D.96A Data Element Dictionary for acceptable code values.		
5278	Duty/tax/fee rate		C an..17	R
		The actual rate of tax/duty.		
5273	Duty/tax/fee rate basis identification		C an..12	O
		Refer to D.96A Data Element Dictionary for acceptable code values.		
1131	Code list qualifier		C an..3	O
		Refer to D.96A Data Element Dictionary for acceptable code values.		
3055	Code list responsible agency, coded		C an..3	D
		Refer to D.96A Data Element Dictionary for acceptable code values.		
5305	DUTY/TAX/FEE CATEGORY, CODED		C an..3	D
		Refer to D.96A Data Element Dictionary for acceptable code values.		
3446	PARTY TAX IDENTIFICATION NUMBER		C an..20	O

Segment: **MOA** Monetary Amount
Position: 1880
Group: SG50
Level: 2
Usage: Conditional (Optional)
Max Use: 2
Purpose: A segment specifying the summary amount for the tax specified.

Notes: This segment is used to specify the tax amounts due, for the tax rate specified in the TAX segment, covering the whole invoice.

Example :

MOA+176:15243.32'

Data Element Summary

<u>Data Element</u>	<u>Component Element Name</u>	<u>Base Attributes</u>	<u>User Attributes</u>
C516	MONETARY AMOUNT	M	M
	5025 Monetary amount type qualifier	M an..3	M
	77 Invoice amount		
	79 Total line items amount		
	113 Prepaid amount (Subset BMF100 only)		
	124 Tax amount		
	125 Taxable amount		
	131 Total charges/allowances		
	136 Total charges/allowances		
	150 Value added TAX (Subset BMF100 only)		
	176 Message total duty/tax/fee amount		
	369 Goods and services tax (EAN Code)		

5004	Monetary amount	C	n..18	R
6345	Currency, coded	C	an..3	N
	ISO 4217 three alpha code			
6343	Currency qualifier	C	an..3	O
	10E			Currency for value added tax purposes (EAN Code)
4405	Status, coded	C	an..3	N

Group: **ALC** Segment Group 51: Allowance or Charge
Position: 1890
Group:
Level: 1
Usage: Conditional (Optional)
Max Use: 15
Purpose: A group of segments specifying allowances and charges summary totals for the invoice.

Segment Summary

	<u>Pos. No.</u>	<u>Seg. ID</u>	<u>Name</u>	<u>Req. Des.</u>	<u>Max. Use</u>	<u>Group: Repeat</u>
M	1900	ALC	Allowance or Charge	M	1	
O	1910	ALI	Additional Information	C	1	
O	1920	MOA	Monetary Amount	C	2	

Segment: **ALC** Allowance or Charge
Position: 1900 (Trigger Segment)
Group: SG51
Level: 1
Usage: Mandatory
Max Use: 1

Purpose: A segment identifying the charge or allowance type to be summarised.

Notes: This segment is used to specify the total per allowance or charge type or all allowances and charges. Allowances and charges detailed both at the header level and on individual product lines are summarized here.

Example :

ALC+A+21108'

Dependency Notes :

DE 4471: This data element is only used if the value in DE 5463 is 'C', charge.

DE C214: This composite is only included if the buyer knows the type of allowance or charge.

Data Element Summary

<u>Data Element</u>	<u>Component Element Name</u>	<u>Base Attributes</u>	<u>User Attributes</u>
5463	ALLOWANCE OR CHARGE QUALIFIER	M an..3	M
	Refer to D.96A Data Element Dictionary for acceptable code values.		
C552	ALLOWANCE/CHARGE INFORMATION	C	O
	1230 Allowance or charge number	C an..35	O
	5189 Charge/allowance description, coded	C an..3	O

4471		Refer to D.96A Data Element Dictionary for acceptable code values.		
	SETTLEMENT, CODED		C an..3	O
1227		Refer to D.96A Data Element Dictionary for acceptable code values.		
	CALCULATION SEQUENCE INDICATOR, CODED		C an..3	N
C214				
	SPECIAL SERVICES IDENTIFICATION		C	D
7161	Special services, coded		C an..3	R
		Refer to D.96A Data Element Dictionary for acceptable code values.		
1131	Code list qualifier		C an..3	O
		Refer to D.96A Data Element Dictionary for acceptable code values.		
3055	Code list responsible agency, coded		C an..3	D
		Refer to D.96A Data Element Dictionary for acceptable code values.		
7160	Special service		C an..35	O
7160	Special service		C an..35	O

Segment: **ALI** Additional Information

Position: 1910

Group: SG51

Level: 2

Usage: Conditional (Optional)

Max Use: 1

Purpose: A segment indicating that allowance or charge specified is subject to special conditions owing to origin, customs preference or commercial factors.

Notes: The ALI segment is used to indicate any special requirements applicable to the allowances or charges at summary level.

Example :

ALI+DE'

Data Element Summary

<u>Data Element</u>	<u>Component Element Name</u>	<u>Base Attributes</u>	<u>User Attributes</u>
3239	COUNTRY OF ORIGIN, CODED	C an..3	O
	Use ISO 3166 Code		
	Refer to D.96A Data Element Dictionary for acceptable code values.		
9213	TYPE OF DUTY REGIME, CODED	C an..3	O
	Refer to D.96A Data Element Dictionary for acceptable code values.		
4183	SPECIAL CONDITIONS, CODED	C an..3	O
	Refer to D.96A Data Element Dictionary for acceptable code values.		
4183	SPECIAL CONDITIONS, CODED	C an..3	O
	Refer to D.96A Data Element Dictionary for acceptable code values.		
4183	SPECIAL CONDITIONS, CODED	C an..3	O
	Refer to D.96A Data Element Dictionary for acceptable code values.		
4183	SPECIAL CONDITIONS, CODED	C an..3	O

4183

Refer to D.96A Data Element Dictionary for acceptable code values.

SPECIAL CONDITIONS, CODED

C an..3 O

Refer to D.96A Data Element Dictionary for acceptable code values.

Segment: **MOA** Monetary Amount
Position: 1920
Group: SG51
Level: 2
Usage: Conditional (Optional)
Max Use: 2
Purpose: A segment specifying the summary amount for the allowance or charge.
Notes: This segment is used to specify the monetary values per allowance or charge type or for all allowances and charges.

Example :

MOA+131:6583.49'

Data Element Summary

Data Element	Component Element Name	Base Attributes	User Attributes
C516	MONETARY AMOUNT	M	M
5025	Monetary amount type qualifier	M an..3	M
	8 Allowance or charge amount		
	25 Charge/allowance basis		
	131 Total charges/allowances		
	400 Rebate amount (EAN Code)		
5004	Monetary amount	C n..18	R
	131 = related to polarity symbol		
6345	Currency, coded	C an..3	N
	ISO 4217 three alpha code		
6343	Currency qualifier	C an..3	N
4405	Status, coded	C an..3	N

Segment: **UNT** Message Trailer
Position: 1930
Group:
Level: 0
Usage: Mandatory
Max Use: 1
Purpose: A service segment ending a message, giving the total number of segments in the message and the control reference number of the message.
Notes: The UNT segment is a mandatory UN/EDIFACT segment. It must always be the last segment in the message.
 Example :
 UNT+84+1'

Data Element Summary

<u>Data Element</u>	<u>Component Element Name</u>	<u>Base Attributes</u>	<u>User Attributes</u>
0074	NUMBER OF SEGMENTS IN A MESSAGE	M n..6	M
	The total number of segments in the message is detailed here.		
0062	MESSAGE REFERENCE NUMBER	M an..14	M
	The reference number used in the UNH segment must be repeated here.		

Document Revision

Version	Date	Description	Author
1.0	2007-01-18	Creation	Hans-Ulrich Berger
1.5	2007-10-02	Revision and change of CI	Marc Tillmann
1.6	2009-09-18	Enhancement	Hans-Ulrich Berger
1.7	2016-Aug-10	Modified JCI or Johnson Controls references to be Adient. Removed JCI logo and added Adient logo.	Hemant Bhardwaj