



Automotive Experience Division

EDI Implementation Guideline

Despatch Advice (DESADV)

Used with JIS Suppliers

Table of Contents

Document Change Log	4
Requirement Designations in this Guide	4
Trading Partner Notes.....	5
AD07AENVDESADV Adient D07A DESADV Envelope Structure	6
Segment: UNA Service String advice	7
Segment: UNB Interchange Header	8
Segment: UNG Functional Group Header	11
Segment: UNE Functional Group Trailer	13
Segment: UNZ Interchange Trailer	14
DESADV Despatch Advice Message	15
Introduction:	15
Branching Diagram.....	15
Segment/Loop Table	19
Segment: UNH Message Header	23
Segment: BGM Beginning of Message - (351) - Despatch Advice.....	25
Segment: DTM Date/Time/Period - (137) - Message Creation Date & Time	27
Segment: DTM Date/Time/Period - (11) - Despatch Date & Time.....	28
Segment: DTM Date/Time/Period - (132) - Estimated Arrival Date & Time	29
Segment: MEA Measurements - (AAD) - Despatch Gross Weight	30
Segment: MEA Measurements - (AAL) - Despatch Net Weight	32
Segment: RFF Reference - (AAN) - Adient Internal SAP JIT Call Header.....	35
Segment: NAD Name and Address - (ST) - Ship To.....	37
Segment: LOC Place/Location Identification - (11) - Unloading Point	40
Segment: NAD Name and Address - (BY) - Buyer.....	43
Segment: NAD Name and Address - (SE) - Seller	47
Segment: NAD Name and Address - (CA) - Carrier	51
Segment: TOD Terms of Delivery or Transport	55
Segment: CPS Consignment Packing Sequence	57
Segment: LIN Line Item - Adient Item Number	59

Segment: PIA Additional Product Id - Supplier's Item Number.....	61
Segment: MEA Measurements - (PD) - Line Item Gross Weight.....	63
Segment: MEA Measurements - (PD) - Line Item Net Weight	65
Segment: QTY Quantity - (12) - Despatch Quantity	67
Segment: RFF Reference - (ON) - Purchase Order Number	69
Segment: RFF Reference - (PC) - JIT Call Number	71
Segment: RFF Reference - (APM) - Adient Internal Sequence Number.....	73
Segment: LOC Place/Location Identification - (159) - Adient Point of Fit.....	75
Segment: UNT Message Trailer	77
Despatch Advice Example	78

Document Change Log

Version	Date	Description	Author
1.0	2014-10-24	Creation	Laurel Kreimes
2.0	2014-12-3	Modifications: MEA(AAD)_03_01_02_6314 – Gross Weight - removed decimals – no decimals are allowed MEA(AAL)_03_01_02_6314 – Net Weight - removed decimals – no decimals are allowed SG1_RFF(AAN) JIS Call Header info moved to detail level SG10_SG17_SG18 SG10_SG17_MEA detail level segments removed – not required SG10_SG17_SG18_RFF(AAN) segment added at detail level Removed SG10_SG17_SG20_LOC(11) segment with Unloading Point and added to SG2_NAD(ST)_LOC location	Laurel Kreimes
2.1	2014-12-9	Modifications: Modified LIN data example to show item number in the format of 9 digits – e.g. XXXXXXXX-XX SG10_SG17_LIN_LIN_03_01_7140 – added note with regard to item number format DESADV data example – modified item numbers in LIN segments to match the DELJIT item numbers and to be in format XXXXXXXX-XX.	Laurel Kreimes
2.2	2016-10-01	Modified JCI or Johnson Controls references to be Adient. Removed Johnson Controls logo and added Adient logo.	Laurel Kreimes

Requirement Designations in this Guide

- C = Conditional
- M = Mandatory
- R = Required

Trading Partner Notes

When to Generate a Despatch Advice:

- A Despatch Advice should be generated at the earliest when the goods are despatched from the supplier and at the latest up to two hours after the goods are despatched.
- The supplier should not send the message earlier than at the time of despatch because once sent the ASN cannot be changed anymore. For that reason the message must only be sent once all data of the transport is fixed, which is at the time of despatch.
- The Despatch Advice must not be sent later than two hours after despatch as Adient will need the Despatch Advice data for planning and disposition.

AD07AENVDESADV Adient D07A DESADV Envelope Structure

Introduction:

The Service String Advice, UNA, and the service segments UNB to UNZ shall appear in the below stated order in an interchange. There may be several functional groups or messages within an interchange and several messages in a functional group. A message consists of segments.

<u>Adient Attributes</u>	<u>Pos. No.</u>	<u>Seg. ID</u>	<u>Name</u>	<u>Base Attributes</u>	<u>Max.Use</u>	<u>Group Repeat</u>	<u>Notes and Comments</u>
	0005	UNA	Service String advice	C	1		
M	0010	UNB	Interchange Header	M	1		
	0020	UNG	Functional Group Header	C	1		
	0030	UNE	Functional Group Trailer	C	1		
M	0040	UNZ	Interchange Trailer	M	1		

Segment: **UNA** Service String advice
Position: 0005
Group:
Level: 0
Usage: Conditional (Optional)
Max Use: 1
Purpose: To define the characters selected for use as delimiters and indicators in the rest of the interchange that follows:

The specifications in the Service string advice take precedence over the specifications for delimiters etc. in segment UNB. See clause 4.

When transmitted, the Service string advice must appear immediately before the Interchange Header (UNB) segment and begin with the upper case characters UNA immediately followed by the six characters selected by the sender to indicate, in sequence, the following functions:

Dependency Notes:
Semantic Notes:
Comments:
Notes:

Notes to Trading Partner

The UNA segment is optional in an EDIFACT interchange. The specifications in the UNA segment define the characters used as separators and indicators for the interchange. This segment will only be sent if the interchange contains non-standard separator characters.

Data Examples

UNA:+.? '

Data Element Summary

<u>User</u>	<u>Data</u>	<u>Component</u>	<u>Attributes</u>
<u>Attribute</u>	<u>Element</u>	<u>Element</u> <u>Name</u>	
M	UNA1	COMPONENT DATA ELEMENT SEPARATOR	M an1
M	UNA2	DATA ELEMENT SEPARATOR	M an1
M	UNA3	DECIMAL NOTATION	M an1
		Notes to Trading Partner:	
		Comma or full stop	
M	UNA4	RELEASE INDICATOR	M an1
		Notes to Trading Partner:	
		If not used, insert space character	
M	UNA5	RESERVED FOR FUTURE USE	M an1
		Notes to Trading Partner:	
		Insert space character	
M	UNA6	SEGMENT TERMINATOR	M an1

Segment: **UNB Interchange Header**
Position: 0010
Group:
Level: 0
Usage: Mandatory
Max Use: 1
Purpose: To start, identify and specify an interchange
Dependency Notes:
Semantic Notes:
Comments:
Business Rules: Variable Name: UNB
Notes: **Data Examples**

UNB+UNOC:3+SENDER-ID+RECEIVER-ID+141021:1800+000000001++DESADVJIS'

Data Element Summary

<u>User</u>	<u>Data</u>	<u>Component</u>	<u>Attributes</u>
<u>Attribute</u>	<u>Element</u>	<u>Element</u> <u>Name</u>	
M	S001	SYNTAX IDENTIFIER	M
		Identification of the agency controlling the syntax and indication of syntax level.	
M		0001 Syntax identifier	M a4
		Coded identification of the agency controlling a syntax and syntax level used in an interchange. Refer to D.96A Data Element Dictionary for acceptable code values.	
M		0002 Syntax version number	M n1
		Version number of the syntax identified in the syntax identifier (0001).	
M	S002	INTERCHANGE SENDER	M
		Identification of the sender of the interchange.	
M		0004 Sender identification	M an..35
		Name or coded representation of the sender of a data interchange. Notes to Trading Partner: The sender identification can be the company EAN or DUNS code or a company-specific code.	
		0007 Partner identification code qualifier	C an..4
		Qualifier referring to the source of codes for the identifiers of interchanging partners. Notes to Trading Partner: Qualifiers to be determined by trading partner relationship. Refer to D.96A Data Element Dictionary for acceptable code values.	
		0008 Address for reverse routing	C an..14
		Address specified by the sender of an interchange to be included by the recipient in the response interchanges to facilitate internal routing.	
M	S003	INTERCHANGE RECIPIENT	M
		Identification of the recipient of the interchange.	

M		0010 Recipient identification	M an..35
		Name or coded representation of the recipient of a data interchange.	
		Notes to Trading Partner:	
		The receiver identification can be the company EAN or DUNS code or a company specific code.	
		0007 Partner identification code qualifier	C an..4
		Qualifier referring to the source of codes for the identifiers of interchanging partners.	
		Notes to Trading Partner:	
		Qualifiers to be determined by trading partner relationship.	
		Refer to D.96A Data Element Dictionary for acceptable code values.	
		0014 Routing address	C an..14
		Address specified by the recipient of an interchange to be included by the sender and used by the recipient for routing of received interchanges inside his organization.	
M	S004	DATE AND TIME OF PREPARATION	M
		Date and time of preparation of the interchange.	
M		0017 Date of preparation	M n6
		Local date when an interchange or a functional group was prepared.	
		Notes to Trading Partner:	
		Format: YYMMDD	
M		0019 Time of preparation	M n4
		Local time of day when an interchange or a functional group was prepared.	
		Notes to Trading Partner:	
		Format: HHMM	
M	0020	INTERCHANGE CONTROL REFERENCE	M an..14
		Unique reference assigned by the sender to an interchange.	
Not Used	S005	RECIPIENTS REFERENCE PASSWORD	C
		Reference or password as agreed between the communicating partners.	
Not Used	0022	Recipient reference/password	M an..14
		Unique reference assigned by the recipient to the data interchange or a password to the recipient's system or to a third party network as specified in the partners interchange agreement.	
Not Used	0025	Recipient reference/password qualifier	C an2
		Qualifier for the recipient's reference or password.	
		Refer to D.96A Data Element Dictionary for acceptable code values.	
Must Use	0026	APPLICATION REFERENCE	C an..14
		Identification of the application area assigned by the sender, to which the messages in the interchange relate e.g. the message identifier if all the messages in the interchange are of the same type.	
		Notes to Trading Partner:	
		DESADVJIS	
	0029	PROCESSING PRIORITY CODE	C a1
		Code determined by the sender requesting processing priority for the interchange.	
		Refer to D.96A Data Element Dictionary for acceptable code values.	
	0031	ACKNOWLEDGEMENT REQUEST	C n1
		Code determined by the sender for acknowledgement of the interchange.	
		Refer to D.96A Data Element Dictionary for acceptable code values.	

0032	COMMUNICATIONS AGREEMENT ID	C an..35
	Identification by name or code of the type of agreement under which the interchange takes place.	
0035	TEST INDICATOR	C n1
	Indication that the interchange is a test.	
	Refer to D.96A Data Element Dictionary for acceptable code values.	

Segment: **UNG Functional Group Header**
Position: 0020
Group:
Level: 0
Usage: Conditional (Optional)
Max Use: 1
Purpose: To head, identify and specify a Functional Group
Dependency Notes:
Semantic Notes:
Comments:
Business Rules: Variable Name: UNG
Notes: **Notes to Trading Partner**

This segment is optional and is used to send additional sender/receiver ID information.

Data Examples

UNG+DESADV+SNDGRPID+RCVGRPID+141021:1800+1+UN+D:07A'

Data Element Summary

<u>User</u>	<u>Data</u>	<u>Component</u>	<u>Name</u>	<u>Attributes</u>
<u>Attribute</u>	<u>Element</u>	<u>Element</u>		
M	0038		FUNCTIONAL GROUP IDENTIFICATION	M an..6
			Identification of the one type of messages in a functional group.	
M	S006		APPLICATION SENDER IDENTIFICATION	M
			Identification of the sender's division, department etc. from which a group of messages is sent.	
M		0040	Application sender identification	M an..35
			Name or code identifying the originating division, department etc. within the sender's organization.	
			Notes to Trading Partner:	
			The sender identification can be the company EAN or DUNS code or a company specific code.	
		0007	Partner identification code qualifier	C an..4
			Qualifier referring to the source of codes for the identifiers of interchanging partners.	
			Notes to Trading Partner:	
			Qualifiers to be determined by trading partner relationship.	
			Refer to D.96A Data Element Dictionary for acceptable code values.	
M	S007		APPLICATION RECIPIENTS IDENTIFICATION	M
			Identification of the recipient's division, department etc. for which a group of messages is intended.	
M		0044	Application recipient's identification	M an..35
			Name or code identifying the division, department etc. within the recipient's organization for which the group of messages is intended.	
			Notes to Trading Partner:	
			The receiver identification can be the company EAN or DUNS code or a company specific code.	

		0007	Partner identification code qualifier	C an..4
			Qualifier referring to the source of codes for the identifiers of interchanging partners.	
			Notes to Trading Partner:	
			Qualifiers to be determined by trading partner relationship.	
			Refer to D.96A Data Element Dictionary for acceptable code values.	
M	S004		DATE AND TIME OF PREPARATION	M
			Date and time of preparation of the interchange.	
M		0017	Date of preparation	M n6
			Local date when an interchange or a functional group was prepared.	
			Notes to Trading Partner:	
			Format: YYMMDD	
M		0019	Time of preparation	M n4
			Local time of day when an interchange or a functional group was prepared.	
			Notes to Trading Partner:	
			Format: HHMM	
M	0048		FUNCTIONAL GROUP REFERENCE NUMBER	M an..14
			Reference number for the functional group assigned by and unique within the sender's division, department etc.	
M	0051		CONTROLLING AGENCY	M an..2
			Code identifying the agency controlling the specification, maintenance and publication of the message type.	
			Refer to D.96A Data Element Dictionary for acceptable code values.	
M	S008		MESSAGE VERSION	M
			Specification of the type of messages in the functional group.	
M		0052	Message type version number	M an..3
			Version number of a message type.	
M		0054	Message type release number	M an..3
			Release number within the current message type version number (0052).	
		0057	Association assigned code	C an..6
			Code, assigned by the association responsible for the design and maintenance of the message type concerned, which further identifies the message.	
	0058		APPLICATION PASSWORD	C an..14
			Password to the recipient's division, department or sectional system.	

Segment: **UNE Functional Group Trailer**
Position: 0030
Group:
Level: 0
Usage: Conditional (Optional)
Max Use: 1
Purpose: To end and check the completeness of a Functional Group
Dependency Notes:
Semantic Notes:
Comments:
Notes: **Data Examples**

UNE+1+1'

Data Element Summary

<u>User</u>	<u>Data</u>	<u>Component</u>	<u>Name</u>	<u>Attributes</u>
<u>Attribute</u>	<u>Element</u>	<u>Element</u>		
M	0060		NUMBER OF MESSAGES	M n..6
			A count of the number of messages in a functional group.	
			Notes to Trading Partner:	
			This field will contain the count of the number of messages present in the data file.	
M	0048		FUNCTIONAL GROUP REFERENCE NUMBER	M an..14
			Reference number for the functional group assigned by and unique within the sender's division, department etc.	
			Notes to Trading Partner:	
			This value will match what is sent in the UNG_0048 element.	

Segment: **UNZ Interchange Trailer**
Position: 0040
Group:
Level: 0
Usage: Mandatory
Max Use: 1
Purpose: To end and check the completeness of an interchange.
Dependency Notes:
Semantic Notes:
Comments:
Notes: **Data Examples**

UNZ+1+000000001'

Data Element Summary

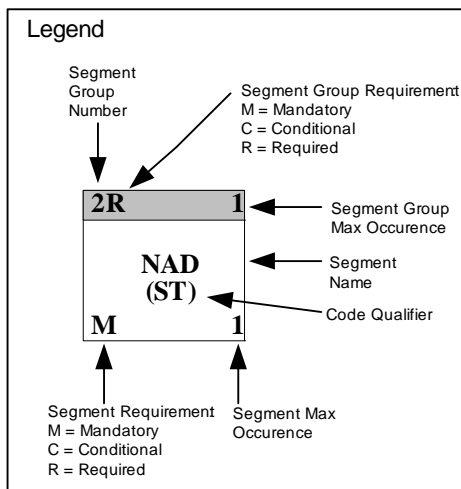
<u>User</u>	<u>Data</u>	<u>Component</u>	<u>Name</u>	<u>Attributes</u>
<u>Attribute</u>	<u>Element</u>	<u>Element</u>		
M	0036		INTERCHANGE CONTROL COUNT	M n..6
			Count either of the number of messages or, if used, of the number of functional groups in an interchange.	
			Notes to Trading Partner:	
			This field will contain the count of the number of interchanges present in the data file.	
M	0020		INTERCHANGE CONTROL REFERENCE	M an..14
			Unique reference assigned by the sender to an interchange.	
			Notes to Trading Partner:	
			This value will match what is sent in the UNB_0020 element.	

DESADV Despatch Advice Message

Introduction:

A message specifying details for goods despatched or ready for despatch under agreed conditions. The United Nations Despatch Advice Message serves both as a specification for Delivery Despatch Advice and also as a Returns Despatch Advice message. Throughout this document, the reference to 'Despatch Advice' may be interpreted as conveying the wider meaning of 'Delivery Despatch Advice/Returns Despatch Advice'.

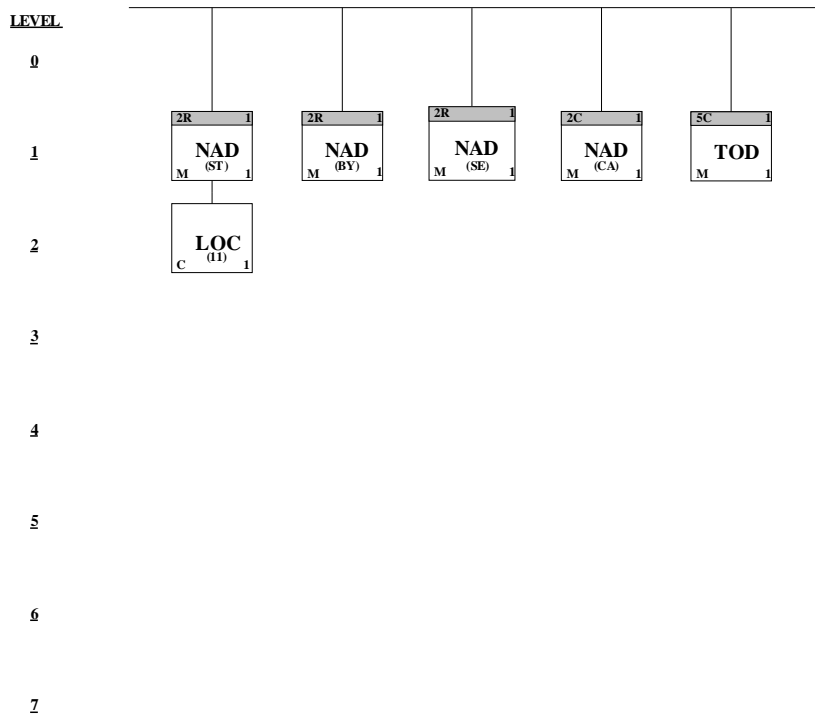
Branching Diagram



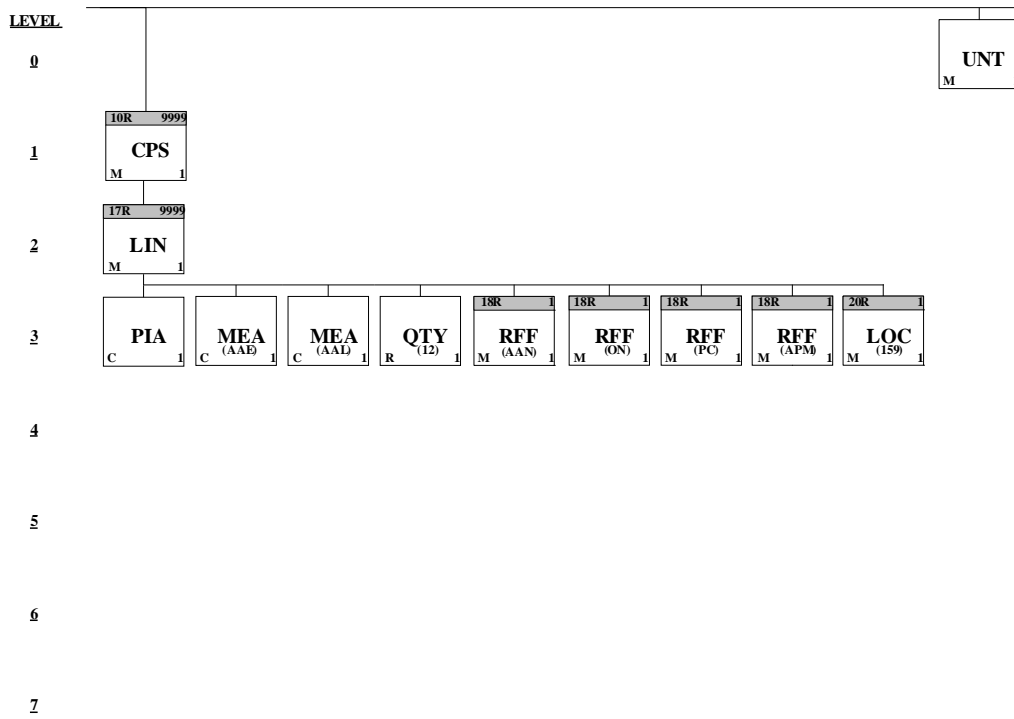
Branching Diagram (continued)



Branching Diagram (continued)



Branching Diagram (continued)



Segment/Loop Table

Heading Section:

<u>Adient Attributes</u>	<u>Pos. No.</u>	<u>Seg. ID</u>	<u>Name</u>	<u>Base Attributes</u>	<u>Max.Use</u>	<u>Group Repeat</u>	<u>Notes and Comments</u>
M	0010	UNH	Message Header	M	1		
M	0020	BGM	Beginning of Message - (351) - Despatch Advice	M	1		
Must Use	0030	DTM	Date/Time/Period - (137) - Message Creation Date & Time	C	1		
Must Use	0030	DTM	Date/Time/Period - (11) - Despatch Date & Time	C	1		
Must Use	0030	DTM	Date/Time/Period - (132) - Estimated Arrival Date & Time	C	1		
Not Used	0040	ALI	Additional Information	C	5		
Must Use	0050	MEA	Measurements - (AAD) - Despatch Gross Weight	C	1		
	0050	MEA	Measurements - (AAL) - Despatch Net Weight	C	1		
Not Used	0060	MOA	Monetary Amount	C	5		
Not Used	0070	CUX	Currencies	C	9		
Must Use	0080		Segment Group 1: RFF-DTM	C		1	
M	0090	RFF	Reference - (AAN) - Adient Internal SAP JIT Call Header	M	1		
Not Used	0100	DTM	Date/Time/Period	C	9		
Must Use	0110		Segment Group 2: NAD-LOC-SG3-SG4	C		1	
M	0120	NAD	Name and Address - (ST) - Ship To	M	1		
	0130	LOC	Place/Location Identification - (11) - Unloading Point	C	1		
Not Used	0140		Segment Group 3: RFF-DTM	C		99	
Not Used	0150	RFF	Reference	M	1		
Not Used	0160	DTM	Date/Time/Period	C	99		
Not Used	0170		Segment Group 4: CTA-COM	C		10	
Not Used	0180	CTA	Contact Information	M	1		
Not Used	0190	COM	Communication Contact	C	5		
Must Use	0110		Segment Group 2: NAD-LOC-SG3-SG4	C		1	
M	0120	NAD	Name and Address - (BY) - Buyer	M	1		
Not Used	0130	LOC	Place/Location Identification	C	10		
Not Used	0140		Segment Group 3: RFF-DTM	C		99	
Not Used	0150	RFF	Reference	M	1		
Not Used	0160	DTM	Date/Time/Period	C	99		
Not Used	0170		Segment Group 4: CTA-COM	C		10	
Not Used	0180	CTA	Contact Information	M	1		
Not Used	0190	COM	Communication Contact	C	5		
Must Use	0110		Segment Group 2: NAD-LOC-SG3-SG4	C		1	
M	0120	NAD	Name and Address - (SE) - Seller	M	1		
Not Used	0130	LOC	Place/Location Identification	C	10		
Not Used	0140		Segment Group 3: RFF-DTM	C		99	
Not Used	0150	RFF	Reference	M	1		
Not Used	0160	DTM	Date/Time/Period	C	99		

Not Used	0170		Segment Group 4: CTA-COM	C	10
Not Used	0180	CTA	Contact Information	M	1
Not Used	0190	COM	Communication Contact	C	5
	0110		Segment Group 2: NAD-LOC-SG3-SG4	C	1
M	0120	NAD	Name and Address - (CA) - Carrier	M	1
Not Used	0130	LOC	Place/Location Identification	C	10
Not Used	0140		Segment Group 3: RFF-DTM	C	99
Not Used	0150	RFF	Reference	M	1
Not Used	0160	DTM	Date/Time/Period	C	99
Not Used	0170		Segment Group 4: CTA-COM	C	10
Not Used	0180	CTA	Contact Information	M	1
Not Used	0190	COM	Communication Contact	C	5
	0200		Segment Group 5: TOD-LOC-FTX	C	1
M	0210	TOD	Terms of Delivery or Transport	M	1
Not Used	0220	LOC	Place/Location Identification	C	5
Not Used	0230	FTX	Free Text	C	5
Not Used	0240		Segment Group 6: TDT-PCD-TMD-SG7	C	10
Not Used	0250	TDT	Transport Information	M	1
Not Used	0260	PCD	Percentage Details	C	6
Not Used	0270	TMD	Transport Movement Details	C	1
Not Used	0280		Segment Group 7: LOC-DTM	C	10
Not Used	0290	LOC	Place/Location Identification	M	1
Not Used	0300	DTM	Date/Time/Period	C	10
Not Used	0310		Segment Group 8: EQD-MEA-SEL-EQA-SG9	C	10
Not Used	0320	EQD	Equipment Details	M	1
Not Used	0330	MEA	Measurements	C	5
Not Used	0340	SEL	Seal Number	C	25
Not Used	0350	EQA	Attached Equipment	C	5
Not Used	0360		Segment Group 9: HAN-FTX	C	10
Not Used	0370	HAN	Handling Instructions	M	1
Not Used	0380	FTX	Free Text	C	10

Detail Section:

Adient Attributes	Pos. No.	Seg. ID	Name	Base Attributes	Max.Use	Group Repeat	Notes and Comments
Must Use	0390		Segment Group 10: CPS-FTX-QVR-SG11-SG17	C		9999	
M	0400	CPS	Consignment Packing Sequence	M	1		
Not Used	0410	FTX	Free Text	C	5		
Not Used	0420	QVR	Quantity Variances	C	9		
Not Used	0430		Segment Group 11: PAC-MEA-QTY-SG12-SG13	C		9999	
Not Used	0440	PAC	Package	M	1		
Not Used	0450	MEA	Measurements	C	10		
Not Used	0460	QTY	Quantity	C	10		
Not Used	0470		Segment Group 12: HAN-FTX	C		10	

Not Used	0480	HAN	Handling Instructions	M	1
Not Used	0490	FTX	Free Text	C	10
Not Used	0500		Segment Group 13: PCI-RFF-DTM-SG14-SG15-SG16	C	1000
Not Used	0510	PCI	Package Identification	M	1
Not Used	0520	RFF	Reference	C	1
Not Used	0530	DTM	Date/Time/Period	C	5
Not Used	0540		Segment Group 14: GIR-DTM	C	99
Not Used	0550	GIR	Related Identification Numbers	M	1
Not Used	0560	DTM	Date/Time/Period	C	5
Not Used	0570		Segment Group 15: GIN-DLM	C	99
Not Used	0580	GIN	Goods Identity Number	M	1
Not Used	0590	DLM	Delivery Limitations	C	10
Not Used	0600		Segment Group 16: COD-MEA-QTY-PCD	C	99
Not Used	0610	COD	Component Details	M	1
Not Used	0620	MEA	Measurements	C	9
Not Used	0630	QTY	Quantity	C	9
Not Used	0640	PCD	Percentage Details	C	9
Must Use	0650		Segment Group 17: LIN-PIA-IMD-MEA-QTY-ALI-GIN-GIR-DLM-DTM-NAD-TDT-TMD-HAN-FTX-MOA-PAC-SG18-SG19-SG20-SG21-SG22-SG25	C	9999
M	0660	LIN	Line Item - Adient Item Number	M	1
	0670	PIA	Additional Product Id - Supplier's Item Number	C	1
Not Used	0680	IMD	Item Description	C	99
	0690	MEA	Measurements - (PD) - Line Item Gross Weight	C	1
	0690	MEA	Measurements - (PD) - Line Item Net Weight	C	1
Must Use	0700	QTY	Quantity - (12) - Despatch Quantity	C	1
Not Used	0710	ALI	Additional Information	C	10
Not Used	0720	GIN	Goods Identity Number	C	100
Not Used	0730	GIR	Related Identification Numbers	C	100
Not Used	0740	DLM	Delivery Limitations	C	100
Not Used	0750	DTM	Date/Time/Period	C	5
Not Used	0760	NAD	Name and Address	C	99
Not Used	0770	TDT	Transport Information	C	1
Not Used	0780	TMD	Transport Movement Details	C	1
Not Used	0790	HAN	Handling Instructions	C	20
Not Used	0800	FTX	Free Text	C	99
Not Used	0810	MOA	Monetary Amount	C	5
Not Used	0820	PAC	Package	C	9
Must Use	0830		Segment Group 18: RFF-NAD-CTA-DTM	C	1
M	0840	RFF	Reference - (ON) - Purchase Order Number	M	1
Not Used	0850	NAD	Name and Address	C	1
Not Used	0860	CTA	Contact Information	C	1
Not Used	0870	DTM	Date/Time/Period	C	1
Must Use	0830		Segment Group 18: RFF-NAD-CTA-DTM	C	1
M	0840	RFF	Reference - (PC) - JIT Call Number	M	1

Not Used	0850	NAD	Name and Address	C	1
Not Used	0860	CTA	Contact Information	C	1
Not Used	0870	DTM	Date/Time/Period	C	1
Must Use	0830		Segment Group 18: RFF-NAD-CTA-DTM	C	1
M	0840	RFF	Reference - (APM) - Adient Internal Sequence Number	M	1
Not Used	0850	NAD	Name and Address	C	1
Not Used	0860	CTA	Contact Information	C	1
Not Used	0870	DTM	Date/Time/Period	C	1
Not Used	0880		Segment Group 19: DGS-QTY-FTX	C	9999
Not Used	0890	DGS	Dangerous Goods	M	1
Not Used	0900	QTY	Quantity	C	1
Not Used	0910	FTX	Free Text	C	5
Must Use	0920		Segment Group 20: LOC-NAD-DTM-QTY	C	1
M	0930	LOC	Place/Location Identification - (159) - Adient Point of Fit	M	1
Not Used	0940	NAD	Name and Address	C	1
Not Used	0950	DTM	Date/Time/Period	C	1
Not Used	0960	QTY	Quantity	C	10
Not Used	0970		Segment Group 21: SGP-QTY	C	1000
Not Used	0980	SGP	Split Goods Placement	M	1
Not Used	0990	QTY	Quantity	C	10
Not Used	1000		Segment Group 22: PCI-DTM-MEA-QTY-SG23-SG24	C	9999
Not Used	1010	PCI	Package Identification	M	1
Not Used	1020	DTM	Date/Time/Period	C	5
Not Used	1030	MEA	Measurements	C	10
Not Used	1040	QTY	Quantity	C	1
Not Used	1050		Segment Group 23: GIN-DLM	C	10
Not Used	1060	GIN	Goods Identity Number	M	1
Not Used	1070	DLM	Delivery Limitations	C	100
Not Used	1080		Segment Group 24: HAN-FTX-GIN	C	10
Not Used	1090	HAN	Handling Instructions	M	1
Not Used	1100	FTX	Free Text	C	5
Not Used	1110	GIN	Goods Identity Number	C	1000
Not Used	1120		Segment Group 25: QVR-DTM	C	10
Not Used	1130	QVR	Quantity Variances	M	1
Not Used	1140	DTM	Date/Time/Period	C	5

Summary Section:

<u>Adient Attributes</u>	<u>Pos. No.</u>	<u>Seg. ID</u>	<u>Name</u>	<u>Base Attributes</u>	<u>Max.Use</u>	<u>Group Repeat</u>	<u>Notes and Comments</u>
Not Used	1150	CNT	Control Total	C	5		
M	1160	UNT	Message Trailer	M	1		

Segment: **UNH** Message Header

Position: 0010

Group:

Level: 0

Usage: Mandatory

Max Use: 1

Purpose: A service segment starting and uniquely identifying a message. The message type code for the Despatch advice message is DESADV.

Note: Despatch advice messages conforming to this document must contain the following data in segment UNH, composite S009:

Data element 0065 DESADV 0052 D 0054 07A 0051 UN

Dependency Notes:

Semantic Notes:

Comments:

Business Rules: Variable Name: UNH1

Notes: **Data Examples**

UNH+123+DESADV:D:07A:UN:GA0220'

Data Element Summary

<u>User</u>	<u>Data</u>	<u>Component</u>	<u>Attributes</u>
<u>Attribute</u>	<u>Element</u>	<u>Element</u> <u>Name</u>	
M	0062	MESSAGE REFERENCE NUMBER Unique message reference assigned by the sender.	M 1 an..14
M	S009	MESSAGE IDENTIFIER Identification of the type, version etc. of the message being interchanged.	M 1
M	0065	Message type identifier Code identifying a type of message and assigned by its controlling agency. DESADV Despatch advice message A code to identify the despatch advice message.	M an..6
M	0052	Message type version number Version number of a message type. D Draft version/UN/EDIFACT Directory Message approved and issued as a draft message (Valid for directories published after March 1993 and prior to March 1997). Message approved as a standard message (Valid for directories published after March 1997).	M an..3
M	0054	Message type release number Release number within the current message type version number (0052). 07A Release 2007 - A Message approved and issued in the first 2007 release of the UNTDID (United Nations Trade Data Interchange Directory).	M an..3

M	0051	Controlling agency	M	an..2
		Code identifying the agency controlling the specification, maintenance and publication of the message type. UN UN/CEFACT United Nations Centre for Trade Facilitation and Electronic Business (UN/CEFACT).		
Must Use	0057	Association assigned code	C	an..6
		Code, assigned by the association responsible for the design and maintenance of the message type concerned, which further identifies the message. GA0220 GA0220 Joint Automotive Industry Forum DESADV V2 (Revision 0)		
Not Used	0068	COMMON ACCESS REFERENCE	C	1 an..35
		Reference serving as a key to relate all subsequent transfers of data to the same business case or file.		
Not Used	S010	STATUS OF THE TRANSFER	C	1
		Statement that the message is one in a sequence of transfers relating to the same topic.		
Not Used	0070	Sequence message transfer number	M	n..2
		Number assigned by the sender indicating that the message is an addition or change of a previously sent message relating to the same topic.		
Not Used	0073	First/last sequence message transfer indication	C	a1
		Indication used for the first and last message in a sequence of the same type of message relating to the same topic. Refer to D.07A Data Element Dictionary for acceptable code values.		

Segment: **BGM** Beginning of Message - (351) - Despatch Advice
Position: 0020
Group:
Level: 0
Usage: Mandatory
Max Use: 1
Purpose: A segment for unique identification of the Despatch Advice document, by means of its name and its number.

Dependency Notes:

Semantic Notes:

Comments:

Notes:

Data Examples

BGM+351+6041128+9'

Data Element Summary

<u>User</u>	<u>Data</u>	<u>Component</u>	<u>Name</u>	<u>Attributes</u>
<u>Attribute</u>	<u>Element</u>	<u>Element</u>		
Must Use	C002		DOCUMENT/MESSAGE NAME	C 1
			Identification of a type of document/message by code or name. Code preferred.	
Must Use		1001	Document name code	C an..3
			Code specifying the document name.	
			351 Despatch advice	
			Document/message by means of which the seller or consignor informs the consignee about the despatch of goods.	
Not Used		1131	Code list identification code	C an..17
			Code identifying a user or association maintained code list.	
Not Used		3055	Code list responsible agency code	C an..3
			Code specifying the agency responsible for a code list.	
			Refer to D.07A Data Element Dictionary for acceptable code values.	
Not Used		1000	Document name	C an..35
			Name of a document.	
Must Use	C106		DOCUMENT/MESSAGE IDENTIFICATION	C 1
			Identification of a document/message by its number and eventually its version or revision.	
Must Use		1004	Document identifier - Delivery Note Number	C an..35
			To identify a document.	
			Notes to Trading Partner:	
			The Delivery Note Number may not be repeated within a one-year period.	
Not Used		1056	Version identifier	C an..9
			To identify a version.	
Not Used		1060	Revision identifier	C an..6
			To identify a revision.	

Must Use	1225	MESSAGE FUNCTION CODE	C	1 an..3
		Code indicating the function of the message.		
		9 Original		
		Initial transmission related to a given transaction.		
Not Used	4343	RESPONSE TYPE CODE	C	1 an..3
		Code specifying the type of acknowledgment required or transmitted.		

Segment: **DTM** **Date/Time/Period - (137) - Message Creation Date & Time**
Position: 0030
Group:
Level: 0
Usage: Conditional (Required)
Max Use: 1
Purpose: Date/time/period related to the whole message. The DTM segment must be specified at least once to identify the Despatch Advice date.

Dependency Notes:

Semantic Notes:

Comments:

Notes:

Data Examples

DTM+137:201410211800:203'

Data Element Summary

<u>User</u>	<u>Data</u>	<u>Component</u>		
<u>Attribute</u>	<u>Element</u>	<u>Element</u>	<u>Name</u>	<u>Attributes</u>
M	C507		DATE/TIME/PERIOD	M 1
			Date and/or time, or period relevant to the specified date/time/period type.	
M		2005	Date or time or period function code qualifier	M an..3
			Code qualifying the function of a date, time or period.	
			137 Document issue date time	
			[2007] Date that a document was issued and when appropriate, signed or otherwise authenticated.	
Must Use		2380	Date or time or period text	C an..35
			The value of a date, a date and time, a time or of a period in a specified representation.	
			Notes to Trading Partner:	
			Format: CCYYMMDDHHMM	
			The message creation date/time must not precede the despatch date/time.	
Must Use		2379	Date or time or period format code	C an..3
			Code specifying the representation of a date, time or period.	
			203 CCYYMMDDHHMM	
			Calendar date including time with minutes: C=Century; Y=Year; M=Month; D=Day; H=Hour; M=Minutes.	

Segment: **DTM** **Date/Time/Period - (11) - Despatch Date & Time**
Position: 0030
Group:
Level: 0
Usage: Conditional (Required)
Max Use: 1
Purpose: Date/time/period related to the whole message. The DTM segment must be specified at least once to identify the Despatch Advice date.

Dependency Notes:

Semantic Notes:

Comments:

Notes:

Data Examples

DTM+11:201410211758:203'

Data Element Summary

<u>User</u>	<u>Data</u>	<u>Component</u>		
<u>Attribute</u>	<u>Element</u>	<u>Element</u>	<u>Name</u>	<u>Attributes</u>
M	C507		DATE/TIME/PERIOD	M 1
			Date and/or time, or period relevant to the specified date/time/period type.	
M		2005	Date or time or period function code qualifier	M an..3
			Code qualifying the function of a date, time or period.	
		11	Despatch date and or time (2170) Date/time on which the goods are or are expected to be despatched or shipped.	
Must Use		2380	Date or time or period text	C an..35
			The value of a date, a date and time, a time or of a period in a specified representation.	
			Notes to Trading Partner:	
			Format: CCYYMMDDHHMM	
			The despatch date/time must precede the estimated arrival date/time.	
Must Use		2379	Date or time or period format code	C an..3
			Code specifying the representation of a date, time or period.	
		203	CCYYMMDDHHMM Calendar date including time with minutes: C=Century; Y=Year; M=Month; D=Day; H=Hour; M=Minutes.	

Segment: **DTM** **Date/Time/Period - (132) - Estimated Arrival Date & Time**
Position: 0030
Group:
Level: 0
Usage: Conditional (Required)
Max Use: 1
Purpose: Date/time/period related to the whole message. The DTM segment must be specified at least once to identify the Despatch Advice date.

Dependency Notes:
Semantic Notes:
Comments:
Notes:

Data Examples

DTM+132:201410241200:203'

Data Element Summary

User	Data	Component	Attributes	
<u>Attribute</u>	<u>Element</u>	<u>Element</u>	<u>Name</u>	
M	C507		DATE/TIME/PERIOD	M 1
			Date and/or time, or period relevant to the specified date/time/period type.	
M		2005	Date or time or period function code qualifier	M an..3
			Code qualifying the function of a date, time or period.	
		132	Transport means arrival date time, estimated	
			[2349] Date and or time of the estimated arrival of means of transport.	
		2380	Date or time or period text	C an..35
			The value of a date, a date and time, a time or of a period in a specified representation.	
			Notes to Trading Partner:	
			Format: CCYYMMDDHHMM	
			The estimated arrival date/time must not equal or precede the despatch date/time.	
		2379	Date or time or period format code	C an..3
			Code specifying the representation of a date, time or period.	
		203	CCYYMMDDHHMM	
			Calendar date including time with minutes: C=Century; Y=Year; M=Month; D=Day; H=Hour; M=Minutes.	

Segment: **MEA** Measurements - (AAD) - Despatch Gross Weight
Position: 0050
Group:
Level: 0
Usage: Conditional (Required)
Max Use: 1
Purpose: A segment specifying the weight and volume of the consignment.
Dependency Notes:
Semantic Notes:
Comments:
Notes: **Data Examples**

MEA+AAX+ADD+KGM:8000.00'

Data Element Summary

<u>User</u>	<u>Data</u>	<u>Component</u>	<u>Name</u>	<u>Attributes</u>
<u>Attribute</u>	<u>Element</u>	<u>Element</u>		
M	6311		MEASUREMENT PURPOSE CODE QUALIFIER Code qualifying the purpose of the measurement. AAX Consignment measurement Measurement related to a consignment; to be specified by the measurement code dimension value.	M 1 an..3
Must Use	C502		MEASUREMENT DETAILS Identification of measurement type.	C 1
		6313	Measured attribute code Code specifying the attribute measured. AAD Consignment gross weight [6012] Total gross weight (mass) of all goods items referred to as one consignment including packaging but excluding any transport equipment.	C an..3
Not Used		6321	Measurement significance code Code specifying the significance of a measurement. Refer to D.07A Data Element Dictionary for acceptable code values.	C an..3
Not Used		6155	Non-discrete measurement name code Code specifying the name of a non-discrete measurement. Refer to D.07A Data Element Dictionary for acceptable code values.	C an..17
Not Used		6154	Non-discrete measurement name Name of a non-discrete measurement.	C an..70
Must Use	C174		VALUE/RANGE Measurement value and relevant minimum and maximum values of the measurement range.	C 1
M		6411	Measurement unit code Code specifying the unit of measurement.	M an..8

Must Use	6314	Measure To specify the value of a measurement. Notes to Trading Partner: Shipment Gross Weight not to contain leading zeroes. Round up to 1 if < 1.	C	an..18
Not Used	6162	Range minimum quantity To specify the minimum value of a range.	C	n..18
Not Used	6152	Range maximum quantity To specify the maximum value of a range.	C	n..18
Not Used	6432	Significant digits quantity Count of the number of significant digits.	C	n..2
Not Used	7383	SURFACE OR LAYER CODE Code specifying the surface or layer of an object. Refer to D.07A Data Element Dictionary for acceptable code values.	C	1 an..3

Segment: **MEA** Measurements - (AAL) - Despatch Net Weight
Position: 0050
Group:
Level: 0
Usage: Conditional (Optional)
Max Use: 1
Purpose: A segment specifying the weight and volume of the consignment.
Dependency Notes:
Semantic Notes:
Comments:
Notes: **Data Examples**

MEA+AAX+AAL+KGM:7900:00'

Data Element Summary

<u>User</u>	<u>Data</u>	<u>Component</u>	<u>Name</u>	<u>Attributes</u>
<u>Attribute</u>	<u>Element</u>	<u>Element</u>		
M	6311		MEASUREMENT PURPOSE CODE QUALIFIER Code qualifying the purpose of the measurement. AAX Consignment measurement Measurement related to a consignment; to be specified by the measurement code dimension value.	M 1 an..3
Must Use	C502		MEASUREMENT DETAILS Identification of measurement type.	C 1
		6313	Measured attribute code Code specifying the attribute measured. AAL Net weight [6160] Weight (mass) of goods including any packing normally going with them to a buyer in a retail sale.	C an..3
		6321	Measurement significance code Code specifying the significance of a measurement. Refer to D.07A Data Element Dictionary for acceptable code values.	C an..3
		6155	Non-discrete measurement name code Code specifying the name of a non-discrete measurement. Refer to D.07A Data Element Dictionary for acceptable code values.	C an..17
		6154	Non-discrete measurement name Name of a non-discrete measurement.	C an..70
Must Use	C174		VALUE/RANGE Measurement value and relevant minimum and maximum values of the measurement range.	C 1
M		6411	Measurement unit code Code specifying the unit of measurement.	M an..8
		6314	Measure To specify the value of a measurement. Notes to Trading Partner: Shipment Net Weight not to contain leading zeroes. Round up to 1 if < 1.	C an..18
		6162	Range minimum quantity To specify the minimum value of a range.	C n..18
		6152	Range maximum quantity To specify the maximum value of a range.	C n..18

	6432	Significant digits quantity Count of the number of significant digits.	C	n..2
Not Used	7383	SURFACE OR LAYER CODE Code specifying the surface or layer of an object. Refer to D.07A Data Element Dictionary for acceptable code values.	C	1 an..3

Group: **RFF** Segment Group 1: Reference - (AAN) - Adient Internal SAP JIT Call
Header
Position: 0080
Group:
Level: 1
Usage: Conditional (Required)
Max Use: 1
Purpose: A group of segments giving references where necessary, their dates relating to the whole message, e.g. contract number.

Segment Summary

<u>User</u>	<u>Pos.</u>	<u>Seg.</u>	<u>Name</u>	<u>Req.</u>	<u>Max.</u>	<u>Group:</u>
<u>Attribute</u>	<u>No.</u>	<u>ID</u>		<u>Des.</u>	<u>Use</u>	<u>Repeat</u>
M	0090	RFF	Reference - (AAN) - Adient Internal SAP JIT Call Header	M		1

Segment: **RFF** Reference - (AAN) - Adient Internal SAP JIT Call Header
Position: 0090 (Trigger Segment)
Group: Segment Group 1 (Reference - (AAN) - Adient Internal SAP JIT Call Header)
 Conditional (Required)
Level: 1
Usage: Mandatory
Max Use: 1
Purpose: A segment for referencing documents relating to the whole despatch advice message, e.g. purchase orders, delivery instructions, import/export license.

Dependency Notes:
Semantic Notes:
Comments:
Notes:

Data Examples
 RFF+AAN:0000002540#0000002325'

Data Element Summary

<u>User</u>	<u>Data</u>	<u>Component</u>	<u>Name</u>	<u>Attributes</u>
<u>Attribute</u>	<u>Element</u>	<u>Element</u>		
M	C506		REFERENCE Identification of a reference.	M 1
M		1153	Reference code qualifier Code qualifying a reference. AAN Delivery schedule number Reference number assigned by buyer to a delivery schedule.	M an..3
Must Use		1154	Reference identifier Identifies a reference.	C an..70
Notes to Trading Partner:				
Adient Internal SAP JIT Call Header Received in DELJIT - SG1_RFF(AAN)_02_1154				
Not Used		1156	Document line identifier To identify a line of a document.	C an..6
Not Used		1056	Version identifier To identify a version.	C an..9
Not Used		1060	Revision identifier To identify a revision.	C an..6

Group: **NAD** Segment Group 2: Name and Address - (ST) - Ship To
Position: 0110
Group:
Level: 1
Usage: Conditional (Required)
Max Use: 1
Purpose: A group of segments identifying names, addresses, locations, and required supporting documents relevant to the whole Despatch Advice.

Segment Summary

<u>User</u> <u>Attribute</u>	<u>Pos.</u> <u>No.</u>	<u>Seg.</u> <u>ID</u>	<u>Name</u>	<u>Req.</u> <u>Des.</u>	<u>Max.</u> <u>Use</u>	<u>Group:</u> <u>Repeat</u>
M	0120	NAD	Name and Address - (ST) - Ship To	M	1	
	0130	LOC	Place/Location Identification - (11) - Unloading Point	C	1	

Segment: **NAD** Name and Address - (ST) - Ship To
Position: 0120 (Trigger Segment)
Group: Segment Group 2 (Name and Address - (ST) - Ship To) Conditional (Required)
Level: 1
Usage: Mandatory
Max Use: 1
Purpose: A segment for identifying names, addresses, and their functions relevant to the whole Despatch Advice. Identification of the parties involved is recommended for the Despatch Advice message, and is to be given in the NAD segment.
 It is recommended that where possible, only the coded form of the party ID should be specified, e.g. the buyer and seller are known to each other, thus only the coded ID is required. The consignee or delivery address may vary and would have to be clearly specified, preferably in structured format.

Dependency Notes:
Semantic Notes:
Comments:
Notes:

Data Examples

NAD+ST+1769::92++SHIP TO NAME'

Data Element Summary

<u>User</u>	<u>Data</u>	<u>Component</u>	<u>Attributes</u>
<u>Attribute</u>	<u>Element</u>	<u>Element</u> <u>Name</u>	
M	3035	PARTY FUNCTION CODE QUALIFIER Code giving specific meaning to a party. ST Ship to Identification of the party to where goods will be or have been shipped.	M 1 an..3
Must Use	C082	PARTY IDENTIFICATION DETAILS Identification of a transaction party by code.	C 1
M	3039	Party identifier Code specifying the identity of a party.	M an..35
		Notes to Trading Partner: Adient Ship-To 4-digit site code - e.g. 1769	
Not Used	1131	Code list identification code Code identifying a user or association maintained code list.	C an..17
Must Use	3055	Code list responsible agency code Code specifying the agency responsible for a code list. 92 Assigned by buyer or buyer's agent Codes assigned by a buyer or buyer's agent.	C an..3
Not Used	C058	NAME AND ADDRESS Unstructured name and address: one to five lines.	C 1
Not Used	3124	Name and address description Free form description of a name and address line.	M an..35
Not Used	3124	Name and address description Free form description of a name and address line.	C an..35

Not Used		3124	Name and address description Free form description of a name and address line.	C	an..35
Not Used		3124	Name and address description Free form description of a name and address line.	C	an..35
Not Used		3124	Name and address description Free form description of a name and address line.	C	an..35
Must Use	C080		PARTY NAME Identification of a transaction party by name, one to five lines. Party name may be formatted.	C	1
M		3036	Party name Name of a party. Notes to Trading Partner: Adient Ship-To Name	M	an..35
Not Used		3036	Party name Name of a party.	C	an..35
Not Used		3036	Party name Name of a party.	C	an..35
Not Used		3036	Party name Name of a party.	C	an..35
Not Used		3036	Party name Name of a party.	C	an..35
Not Used		3045	Party name format code Code specifying the representation of a party name. Refer to D.07A Data Element Dictionary for acceptable code values.	C	an..3
Not Used	C059		STREET Street address and/or PO Box number in a structured address: one to four lines.	C	1
Not Used		3042	Street and number or post office box identifier To identify a street and number and/or Post Office box number.	M	an..35
Not Used		3042	Street and number or post office box identifier To identify a street and number and/or Post Office box number.	C	an..35
Not Used		3042	Street and number or post office box identifier To identify a street and number and/or Post Office box number.	C	an..35
Not Used		3042	Street and number or post office box identifier To identify a street and number and/or Post Office box number.	C	an..35
Not Used	3164		CITY NAME Name of a city.	C	1 an..35
Not Used	C819		COUNTRY SUBDIVISION DETAILS To specify a country subdivision, such as state, canton, county, prefecture.	C	1
Not Used		3229	Country subdivision identifier To identify a country subdivision, such as state, canton, county, prefecture.	C	an..9
Not Used		1131	Code list identification code Code identifying a user or association maintained code list.	C	an..17

Not Used	3055	Code list responsible agency code Code specifying the agency responsible for a code list. Refer to D.07A Data Element Dictionary for acceptable code values.	C	an..3
Not Used	3228	Country subdivision name Name of a country subdivision, such as state, canton, county, prefecture.	C	an..70
Not Used	3251	POSTAL IDENTIFICATION CODE Code specifying the postal zone or address.	C	1 an..17
Not Used	3207	COUNTRY IDENTIFIER Identification of the name of the country or other geographical entity as defined in ISO 3166-1 and UN/ECE Recommendation 3.	C	1 an..3

Segment: **LOC** Place/Location Identification - (11) - Unloading Point
Position: 0130
Group: Segment Group 2 (Name and Address - (ST) - Ship To) Conditional (Required)
Level: 2
Usage: Conditional (Optional)
Max Use: 1
Purpose: A segment indicating more details regarding specific places/locations related to the party specified in the NAD segment, e.g. internal site/building number.

Dependency Notes:
Semantic Notes:
Comments:
Notes:

Data Examples

LOC+11+43A02'

Data Element Summary

<u>User</u>	<u>Data</u>	<u>Component</u>	<u>Attributes</u>
<u>Attribute</u>	<u>Element</u>	<u>Element</u> <u>Name</u>	
M	3227	LOCATION FUNCTION CODE QUALIFIER Code identifying the function of a location. 11 Place of discharge [3392] Seaport, airport, freight terminal, rail station or other place at which goods are unloaded from the means of transport having been used for their carriage.	M 1 an..3
Must Use	C517	LOCATION IDENTIFICATION Identification of a location by code or name.	C 1
Must Use		3225 Location identifier To identify a location.	C an..35
		Notes to Trading Partner: Adient Unloading Point Value received in DELJIT - SG4_SG7_SG10_LOC(11)_02_01_3225	
Not Used		1131 Code list identification code Code identifying a user or association maintained code list.	C an..17
Not Used		3055 Code list responsible agency code Code specifying the agency responsible for a code list. Refer to D.07A Data Element Dictionary for acceptable code values.	C an..3
Not Used		3224 Location name Name of the location.	C an..256
Not Used	C519	RELATED LOCATION ONE IDENTIFICATION Identification the first related location by code or name.	C 1
Not Used		3223 First related location identifier To identify a first related location.	C an..35
Not Used		1131 Code list identification code Code identifying a user or association maintained code list.	C an..17

Not Used		3055	Code list responsible agency code Code specifying the agency responsible for a code list. Refer to D.07A Data Element Dictionary for acceptable code values.	C	an..3
Not Used		3222	First related location name Name of first related location.	C	an..70
Not Used	C553		RELATED LOCATION TWO IDENTIFICATION Identification of second related location by code or name.	C	1
Not Used		3233	Second related location identifier To identify a second related location.	C	an..35
Not Used		1131	Code list identification code Code identifying a user or association maintained code list.	C	an..17
Not Used		3055	Code list responsible agency code Code specifying the agency responsible for a code list. Refer to D.07A Data Element Dictionary for acceptable code values.	C	an..3
Not Used		3232	Second related location name Name of the second related location.	C	an..70
Not Used	5479		RELATION CODE Code specifying a relation.	C	1 an..3

Group: **NAD** Segment Group 2: Name and Address - (BY) - Buyer
Position: 0110
Group:
Level: 1
Usage: Conditional (Required)
Max Use: 1
Purpose:

Segment Summary

<u>User</u> <u>Attribute</u>	<u>Pos.</u> <u>No.</u>	<u>Seg.</u> <u>ID</u>	<u>Name</u>	<u>Req.</u> <u>Des.</u>	<u>Max.</u> <u>Use</u>	<u>Group:</u> <u>Repeat</u>
M	0120	NAD	Name and Address - (BY) - Buyer	M	1	

Segment: **NAD** Name and Address - (BY) - Buyer
Position: 0120 (Trigger Segment)
Group: Segment Group 2 (Name and Address - (BY) - Buyer) Conditional (Required)
Level: 1
Usage: Mandatory
Max Use: 1
Purpose: A segment for identifying names, addresses, and their functions relevant to the whole Despatch Advice. Identification of the parties involved is recommended for the Despatch Advice message, and is to be given in the NAD segment.
 It is recommended that where possible, only the coded form of the party ID should be specified, e.g. the buyer and seller are known to each other, thus only the coded ID is required. The consignee or delivery address may vary and would have to be clearly specified, preferably in structured format.

Dependency Notes:
Semantic Notes:
Comments:
Notes:

Data Examples

NAD+BY+1769::92++ADIENT PLANT NAME'

Data Element Summary

<u>User</u>	<u>Data</u>	<u>Component</u>	<u>Attributes</u>
<u>Attribute</u>	<u>Element</u>	<u>Element</u> <u>Name</u>	
M	3035	PARTY FUNCTION CODE QUALIFIER Code giving specific meaning to a party. BY Buyer [3002] Party to which merchandise or services are sold.	M 1 an..3
Must Use	C082	PARTY IDENTIFICATION DETAILS Identification of a transaction party by code.	C 1
M		3039 Party identifier Code specifying the identity of a party. Notes to Trading Partner: Adient 4-digit site code - e.g. 1769	M an..35
		1131 Code list identification code Code identifying a user or association maintained code list.	C an..17
		3055 Code list responsible agency code Code specifying the agency responsible for a code list. 92 Assigned by buyer or buyer's agent Codes assigned by a buyer or buyer's agent.	C an..3
Not Used	C058	NAME AND ADDRESS Unstructured name and address: one to five lines.	C 1
Not Used		3124 Name and address description Free form description of a name and address line.	M an..35
Not Used		3124 Name and address description Free form description of a name and address line.	C an..35

Not Used		3124	Name and address description Free form description of a name and address line.	C	an..35
Not Used		3124	Name and address description Free form description of a name and address line.	C	an..35
Not Used		3124	Name and address description Free form description of a name and address line.	C	an..35
Must Use	C080		PARTY NAME Identification of a transaction party by name, one to five lines. Party name may be formatted.	C	1
M		3036	Party name Name of a party. Notes to Trading Partner: Adient Buyer 4-digit site code - e.g. 1769	M	an..35
		3036	Party name Name of a party.	C	an..35
		3036	Party name Name of a party.	C	an..35
		3036	Party name Name of a party.	C	an..35
		3036	Party name Name of a party.	C	an..35
		3045	Party name format code Code specifying the representation of a party name. Refer to D.07A Data Element Dictionary for acceptable code values.	C	an..3
Not Used	C059		STREET Street address and/or PO Box number in a structured address: one to four lines.	C	1
Not Used		3042	Street and number or post office box identifier To identify a street and number and/or Post Office box number.	M	an..35
Not Used		3042	Street and number or post office box identifier To identify a street and number and/or Post Office box number.	C	an..35
Not Used		3042	Street and number or post office box identifier To identify a street and number and/or Post Office box number.	C	an..35
Not Used		3042	Street and number or post office box identifier To identify a street and number and/or Post Office box number.	C	an..35
Not Used	3164		CITY NAME Name of a city.	C	1 an..35
Not Used	C819		COUNTRY SUBDIVISION DETAILS To specify a country subdivision, such as state, canton, county, prefecture.	C	1
Not Used		3229	Country subdivision identifier To identify a country subdivision, such as state, canton, county, prefecture.	C	an..9
Not Used		1131	Code list identification code Code identifying a user or association maintained code list.	C	an..17

Not Used	3055	Code list responsible agency code Code specifying the agency responsible for a code list. Refer to D.07A Data Element Dictionary for acceptable code values.	C	an..3
Not Used	3228	Country subdivision name Name of a country subdivision, such as state, canton, county, prefecture.	C	an..70
Not Used	3251	POSTAL IDENTIFICATION CODE Code specifying the postal zone or address.	C	1 an..17
Not Used	3207	COUNTRY IDENTIFIER Identification of the name of the country or other geographical entity as defined in ISO 3166-1 and UN/ECE Recommendation 3.	C	1 an..3

Group: **NAD** Segment Group 2: Name and Address - (SE) - Seller
Position: 0110
Group:
Level: 1
Usage: Conditional (Required)
Max Use: 1
Purpose:

Segment Summary

<u>User</u> <u>Attribute</u>	<u>Pos.</u> <u>No.</u>	<u>Seg.</u> <u>ID</u>	<u>Name</u>	<u>Req.</u> <u>Des.</u>	<u>Max.</u> <u>Use</u>	<u>Group:</u> <u>Repeat</u>
M	0120	NAD	Name and Address - (SE) - Seller	M	1	

Segment: **NAD** Name and Address - (SE) - Seller
Position: 0120 (Trigger Segment)
Group: Segment Group 2 (Name and Address - (SE) - Seller) Conditional (Required)
Level: 1
Usage: Mandatory
Max Use: 1
Purpose: A segment for identifying names, addresses, and their functions relevant to the whole Despatch Advice. Identification of the parties involved is recommended for the Despatch Advice message, and is to be given in the NAD segment.
 It is recommended that where possible, only the coded form of the party ID should be specified, e.g. the buyer and seller are known to each other, thus only the coded ID is required. The consignee or delivery address may vary and would have to be clearly specified, preferably in structured format.

Dependency Notes:
Semantic Notes:
Comments:
Notes:

Data Examples

NAD+SE+305216::92++SELLER NAME'

Data Element Summary

<u>User</u>	<u>Data</u>	<u>Component</u>	<u>Attributes</u>
<u>Attribute</u>	<u>Element</u>	<u>Element</u> <u>Name</u>	
M	3035	PARTY FUNCTION CODE QUALIFIER Code giving specific meaning to a party. SE Seller [3346] Party selling merchandise or services to a buyer.	M 1 an..3
Must Use	C082	PARTY IDENTIFICATION DETAILS Identification of a transaction party by code.	C 1
M	3039	Party identifier Code specifying the identity of a party. Notes to Trading Partner: Adient assigned supplier code - e.g. 305216	M an..35
	1131	Code list identification code Code identifying a user or association maintained code list.	C an..17
	3055	Code list responsible agency code Code specifying the agency responsible for a code list. 92 Assigned by buyer or buyer's agent Codes assigned by a buyer or buyer's agent.	C an..3
Not Used	C058	NAME AND ADDRESS Unstructured name and address: one to five lines.	C 1
Not Used	3124	Name and address description Free form description of a name and address line.	M an..35
Not Used	3124	Name and address description Free form description of a name and address line.	C an..35

Not Used		3124	Name and address description Free form description of a name and address line.	C	an..35
Not Used		3124	Name and address description Free form description of a name and address line.	C	an..35
Not Used		3124	Name and address description Free form description of a name and address line.	C	an..35
Must Use	C080		PARTY NAME Identification of a transaction party by name, one to five lines. Party name may be formatted.	C	1
M		3036	Party name Name of a party. Notes to Trading Partner: Supplier's Name	M	an..35
		3036	Party name Name of a party.	C	an..35
		3036	Party name Name of a party.	C	an..35
		3036	Party name Name of a party.	C	an..35
		3036	Party name Name of a party.	C	an..35
		3045	Party name format code Code specifying the representation of a party name. Refer to D.07A Data Element Dictionary for acceptable code values.	C	an..3
Not Used	C059		STREET Street address and/or PO Box number in a structured address: one to four lines.	C	1
Not Used		3042	Street and number or post office box identifier To identify a street and number and/or Post Office box number.	M	an..35
Not Used		3042	Street and number or post office box identifier To identify a street and number and/or Post Office box number.	C	an..35
Not Used		3042	Street and number or post office box identifier To identify a street and number and/or Post Office box number.	C	an..35
Not Used		3042	Street and number or post office box identifier To identify a street and number and/or Post Office box number.	C	an..35
Not Used	3164		CITY NAME Name of a city.	C	1 an..35
Not Used	C819		COUNTRY SUBDIVISION DETAILS To specify a country subdivision, such as state, canton, county, prefecture.	C	1
Not Used		3229	Country subdivision identifier To identify a country subdivision, such as state, canton, county, prefecture.	C	an..9
Not Used		1131	Code list identification code Code identifying a user or association maintained code list.	C	an..17

Not Used	3055	Code list responsible agency code Code specifying the agency responsible for a code list. Refer to D.07A Data Element Dictionary for acceptable code values.	C	an..3
Not Used	3228	Country subdivision name Name of a country subdivision, such as state, canton, county, prefecture.	C	an..70
Not Used	3251	POSTAL IDENTIFICATION CODE Code specifying the postal zone or address.	C	1 an..17
Not Used	3207	COUNTRY IDENTIFIER Identification of the name of the country or other geographical entity as defined in ISO 3166-1 and UN/ECE Recommendation 3.	C	1 an..3

Group: **NAD** Segment Group 2: Name and Address - (CA) - Carrier
Position: 0110
Group:
Level: 1
Usage: Conditional (Optional)
Max Use: 1
Purpose:

Segment Summary

<u>User</u>	<u>Pos.</u>	<u>Seg.</u>			<u>Req.</u>	<u>Max.</u>	<u>Group:</u>
<u>Attribute</u>	<u>No.</u>	<u>ID</u>	<u>Name</u>		<u>Des.</u>	<u>Use</u>	<u>Repeat</u>
M	0120	NAD	Name and Address - (CA) - Carrier		M	1	

Segment: **NAD** Name and Address - (CA) - Carrier
Position: 0120 (Trigger Segment)
Group: Segment Group 2 (Name and Address - (CA) - Carrier) Conditional (Optional)
Level: 1
Usage: Mandatory
Max Use: 1
Purpose: A segment for identifying names, addresses, and their functions relevant to the whole Despatch Advice. Identification of the parties involved is recommended for the Despatch Advice message, and is to be given in the NAD segment.
 It is recommended that where possible, only the coded form of the party ID should be specified, e.g. the buyer and seller are known to each other, thus only the coded ID is required. The consignee or delivery address may vary and would have to be clearly specified, preferably in structured format.

Dependency Notes:
Semantic Notes:
Comments:
Notes:

Data Examples

NAD+CA+1234567890::91++CARRIER NAME'

Data Element Summary

<u>User</u>	<u>Data</u>	<u>Component</u>	<u>Attributes</u>
<u>Attribute</u>	<u>Element</u>	<u>Element</u> <u>Name</u>	
M	3035	PARTY FUNCTION CODE QUALIFIER Code giving specific meaning to a party. CA Carrier [3126] Party undertaking or arranging transport of goods between named points.	M 1 an..3
Must Use	C082	PARTY IDENTIFICATION DETAILS Identification of a transaction party by code.	C 1
M	3039	Party identifier Code specifying the identity of a party.	M an..35
		Notes to Trading Partner: Carrier ID	
Not Used	1131	Code list identification code Code identifying a user or association maintained code list.	C an..17
	3055	Code list responsible agency code Code specifying the agency responsible for a code list. 91 Assigned by seller or seller's agent Codes assigned by a seller or seller's agent.	C an..3
Not Used	C058	NAME AND ADDRESS Unstructured name and address: one to five lines.	C 1
Not Used	3124	Name and address description Free form description of a name and address line.	M an..35
Not Used	3124	Name and address description Free form description of a name and address line.	C an..35

Not Used		3124	Name and address description Free form description of a name and address line.	C	an..35
Not Used		3124	Name and address description Free form description of a name and address line.	C	an..35
Not Used		3124	Name and address description Free form description of a name and address line.	C	an..35
Must Use	C080		PARTY NAME Identification of a transaction party by name, one to five lines. Party name may be formatted.	C	1
M		3036	Party name Name of a party. Notes to Trading Partner: Carrier Name	M	an..35
Not Used		3036	Party name Name of a party.	C	an..35
Not Used		3036	Party name Name of a party.	C	an..35
Not Used		3036	Party name Name of a party.	C	an..35
Not Used		3036	Party name Name of a party.	C	an..35
Not Used		3045	Party name format code Code specifying the representation of a party name. Refer to D.07A Data Element Dictionary for acceptable code values.	C	an..3
Not Used	C059		STREET Street address and/or PO Box number in a structured address: one to four lines.	C	1
Not Used		3042	Street and number or post office box identifier To identify a street and number and/or Post Office box number.	M	an..35
Not Used		3042	Street and number or post office box identifier To identify a street and number and/or Post Office box number.	C	an..35
Not Used		3042	Street and number or post office box identifier To identify a street and number and/or Post Office box number.	C	an..35
Not Used		3042	Street and number or post office box identifier To identify a street and number and/or Post Office box number.	C	an..35
Not Used	3164		CITY NAME Name of a city.	C	1 an..35
Not Used	C819		COUNTRY SUBDIVISION DETAILS To specify a country subdivision, such as state, canton, county, prefecture.	C	1
Not Used		3229	Country subdivision identifier To identify a country subdivision, such as state, canton, county, prefecture.	C	an..9
Not Used		1131	Code list identification code Code identifying a user or association maintained code list.	C	an..17

Not Used	3055	Code list responsible agency code Code specifying the agency responsible for a code list. Refer to D.07A Data Element Dictionary for acceptable code values.	C	an..3
Not Used	3228	Country subdivision name Name of a country subdivision, such as state, canton, county, prefecture.	C	an..70
Not Used	3251	POSTAL IDENTIFICATION CODE Code specifying the postal zone or address.	C	1 an..17
Not Used	3207	COUNTRY IDENTIFIER Identification of the name of the country or other geographical entity as defined in ISO 3166-1 and UN/ECE Recommendation 3.	C	1 an..3

Group: **TOD** Segment Group 5: Terms of Delivery or Transport
Position: 0200
Group:
Level: 1
Usage: Conditional (Optional)
Max Use: 1
Purpose: A group of segments indicating terms of delivery.

Segment Summary

<u>User</u>	<u>Pos.</u>	<u>Seg.</u>	<u>Segment Summary</u>		<u>Req.</u>	<u>Max.</u>	<u>Group:</u>
<u>Attribute</u>	<u>No.</u>	<u>ID</u>	<u>Name</u>		<u>Des.</u>	<u>Use</u>	<u>Repeat</u>
M	0210	TOD	Terms of Delivery or Transport		M		1

Segment: **TOD** **Terms of Delivery or Transport**
Position: 0210 (Trigger Segment)
Group: Segment Group 5 (Terms of Delivery or Transport) Conditional (Optional)
Level: 1
Usage: Mandatory
Max Use: 1
Purpose: A segment indicating the terms of delivery and transfer for the whole despatch advice.
Dependency Notes:
Semantic Notes:
Comments:
Notes: **Data Examples**

TOD+6++1:::EX WORKS'

Data Element Summary

<u>User</u>	<u>Data</u>	<u>Component</u>	<u>Name</u>	<u>Attributes</u>
<u>Attribute</u>	<u>Element</u>	<u>Element</u>		
Must Use	4055		DELIVERY OR TRANSPORT TERMS FUNCTION CODE Code specifying the function of delivery or transport terms. 6 Delivery condition Specifies the conditions under which the goods must be delivered to the consignee.	C 1 an..3
Not Used	4215		TRANSPORT CHARGES PAYMENT METHOD CODE Code specifying the payment method for transport charges. Refer to D.07A Data Element Dictionary for acceptable code values.	C 1 an..3
Must Use	C100		TERMS OF DELIVERY OR TRANSPORT Terms of delivery or transport code from a specified source.	C 1
Must Use		4053	Delivery or transport terms description code Code specifying the delivery or transport terms. 1 Delivery arranged by the supplier Indicates that the supplier will arrange delivery of the goods. 2 Delivery arranged by logistic service provider Code indicating that the logistic service provider has arranged the delivery of goods.	C an..3
Not Used		1131	Code list identification code Code identifying a user or association maintained code list.	C an..17
Not Used		3055	Code list responsible agency code Code specifying the agency responsible for a code list. Refer to D.07A Data Element Dictionary for acceptable code values.	C an..3
Must Use		4052	Delivery or transport terms description Free form description of delivery or transport terms.	C an..70
		4052	Delivery or transport terms description Free form description of delivery or transport terms.	C an..70

Group: **CPS** Segment Group 10: Consignment Packing Sequence
Position: 0390
Group:
Level: 1
Usage: Conditional (Required)
Max Use: 9999
Purpose: A group of segments providing details of all package levels and of the individual despatched items contained in the consignment. This segment group provides the capability to give the hierarchical packing relationships. The group defines a logical top-down order structure. The lowest level package information of the hierarchy is followed by the detail product information.

Segment Summary

<u>User</u>	<u>Pos.</u>	<u>Seg.</u>		<u>Req.</u>	<u>Max.</u>	<u>Group:</u>
<u>Attribute</u>	<u>No.</u>	<u>ID</u>	<u>Name</u>	<u>Des.</u>	<u>Use</u>	<u>Repeat</u>
M	0400	CPS	Consignment Packing Sequence	M	1	
	0650		Segment Group 17: Line Item	C		9999

Segment: **CPS** Consignment Packing Sequence
Position: 0400 (Trigger Segment)
Group: Segment Group 10 (Consignment Packing Sequence) Conditional (Required)
Level: 1
Usage: Mandatory
Max Use: 1
Purpose: A segment identifying the sequence in which packing of the consignment occurs, e.g. boxes loaded onto a pallet.

Dependency Notes:

Semantic Notes:

Comments:

Notes: **Data Examples**

CPS+1'

Data Element Summary

<u>User</u>	<u>Data</u>	<u>Component</u>	<u>Name</u>	<u>Attributes</u>
<u>Attribute</u>	<u>Element</u>	<u>Element</u>		
M	7164		HIERARCHICAL STRUCTURE LEVEL IDENTIFIER To identify a level within a hierarchical structure.	M 1 an..35
Notes to Trading Partner: Beginning with 1 for the first CPS loop and incremented by 1 for each subsequent CPS loop.				
Not Used	7166		HIERARCHICAL STRUCTURE PARENT IDENTIFIER To identify the next higher level in a hierarchical structure.	C 1 an..35
Not Used	7075		PACKAGING LEVEL CODE Code specifying a level of packaging. Refer to D.07A Data Element Dictionary for acceptable code values.	C 1 an..3

Group: **LIN** Segment Group 17: Line Item
Position: 0650
Group: Segment Group 10 (Consignment Packing Sequence) Conditional (Required)
Level: 2
Usage: Conditional (Required)
Max Use: 9999
Purpose: A group of segments providing details of the individual despatched items.

Segment Summary

<u>User</u> <u>Attribute</u>	<u>Pos.</u> <u>No.</u>	<u>Seg.</u> <u>ID</u>	<u>Name</u>	<u>Req.</u> <u>Des.</u>	<u>Max.</u> <u>Use</u>	<u>Group:</u> <u>Repeat</u>
M	0660	LIN	Line Item - Adient Item Number	M	1	
	0670	PIA	Additional Product Id - Supplier's Item Number	C	1	
	0690	MEA	Measurements - (PD) - Line Item Gross Weight	C	1	
	0690	MEA	Measurements - (PD) - Line Item Net Weight	C	1	
Must Use	0700	QTY	Quantity - (12) - Despatch Quantity	C	1	
	0830		Segment Group 18: Reference - (ON) - Purchase Order Number	C		1
	0830		Segment Group 18: Reference - (PC) - JIT Call Number	C		1
	0830		Segment Group 18: Reference - (APM) - Adient Internal Sequence Number	C		1
	0920		Segment Group 20: Place/Location Identification - (159) - Adient Point of Fit	C		1

Segment: **LIN Line Item - Adient Item Number**
Position: 0660 (Trigger Segment)
Group: Segment Group 17 (Line Item) Conditional (Required)
Level: 2
Usage: Mandatory
Max Use: 1
Purpose: A segment identifying the product being despatched.
 All other segments in the detail section following the LIN segment refer to that line item.

Dependency Notes:
Semantic Notes:
Comments:
Notes:

Data Examples

LIN+1++7360567-02:IN'

Data Element Summary

<u>User</u>	<u>Data</u>	<u>Component</u>	<u>Name</u>	<u>Attributes</u>
<u>Attribute</u>	<u>Element</u>	<u>Element</u>		
Must Use	1082		LINE ITEM IDENTIFIER To identify a line item.	C 1 an..6
			Notes to Trading Partner: Beginning with 1 for the first LIN loop and incremented by 1 for each subsequent LIN Loop.	
Not Used	1229		ACTION CODE Code specifying the action to be taken or already taken. Refer to D.07A Data Element Dictionary for acceptable code values.	C 1 an..3
Must Use	C212		ITEM NUMBER IDENTIFICATION Goods identification for a specified source.	C 1
Must Use		7140	Item identifier - Adient Item Number To identify an item.	C an..35
			Notes to Trading Partner: Adient Item Number	
Must Use		7143	Item type identification code Coded identification of an item type. IN Buyer's item number The item number has been allocated by the buyer.	C an..3
Not Used		1131	Code list identification code Code identifying a user or association maintained code list.	C an..17
Not Used		3055	Code list responsible agency code Code specifying the agency responsible for a code list. Refer to D.07A Data Element Dictionary for acceptable code values.	C an..3
Not Used	C829		SUB-LINE INFORMATION To provide an indication that a segment or segment group is used to contain sub-line or sub-line item information and to optionally enable the sub-line to be identified.	C 1

Not Used	5495	Sub-line indicator code Code indicating a sub-line item. Refer to D.07A Data Element Dictionary for acceptable code values.	C	an..3
Not Used	1082	Line item identifier To identify a line item.	C	an..6
Not Used	1222	CONFIGURATION LEVEL NUMBER To specify a level within a configuration.	C	1 n..2
Not Used	7083	CONFIGURATION OPERATION CODE Code specifying the configuration operation. Refer to D.07A Data Element Dictionary for acceptable code values.	C	1 an..3

Segment: **PIA Additional Product Id - Supplier's Item Number**
Position: 0670
Group: Segment Group 17 (Line Item) Conditional (Required)
Level: 3
Usage: Conditional (Optional)
Max Use: 1
Purpose: A segment providing additional product identification.
Dependency Notes:
Semantic Notes:
Comments:
Notes: **Data Examples**

PIA+1+1234567-02:SA'

Data Element Summary

<u>User</u>	<u>Data</u>	<u>Component</u>	<u>Name</u>	<u>Attributes</u>
<u>Attribute</u>	<u>Element</u>	<u>Element</u>		
M	4347		PRODUCT IDENTIFIER CODE QUALIFIER Code qualifying the product identifier. 1 Additional identification Information which specifies and qualifies product identifications.	M 1 an..3
M	C212		ITEM NUMBER IDENTIFICATION Goods identification for a specified source.	M 1
Must Use		7140	Item identifier - Supplier's Item Number To identify an item. Notes to Trading Partner: Supplier's Item Number	C an..35
Must Use		7143	Item type identification code Coded identification of an item type. SA Supplier's article number Number assigned to an article by the supplier of that article.	C an..3
Not Used		1131	Code list identification code Code identifying a user or association maintained code list.	C an..17
Not Used		3055	Code list responsible agency code Code specifying the agency responsible for a code list. Refer to D.07A Data Element Dictionary for acceptable code values.	C an..3
Not Used	C212		ITEM NUMBER IDENTIFICATION Goods identification for a specified source.	C 1
Not Used		7140	Item identifier To identify an item.	C an..35
Not Used		7143	Item type identification code Coded identification of an item type. Refer to D.07A Data Element Dictionary for acceptable code values.	C an..3

Not Used		1131	Code list identification code Code identifying a user or association maintained code list.	C	an..17
Not Used		3055	Code list responsible agency code Code specifying the agency responsible for a code list. Refer to D.07A Data Element Dictionary for acceptable code values.	C	an..3
Not Used	C212		ITEM NUMBER IDENTIFICATION Goods identification for a specified source.	C	1
Not Used		7140	Item identifier To identify an item.	C	an..35
Not Used		7143	Item type identification code Coded identification of an item type. Refer to D.07A Data Element Dictionary for acceptable code values.	C	an..3
Not Used		1131	Code list identification code Code identifying a user or association maintained code list.	C	an..17
Not Used		3055	Code list responsible agency code Code specifying the agency responsible for a code list. Refer to D.07A Data Element Dictionary for acceptable code values.	C	an..3
Not Used	C212		ITEM NUMBER IDENTIFICATION Goods identification for a specified source.	C	1
Not Used		7140	Item identifier To identify an item.	C	an..35
Not Used		7143	Item type identification code Coded identification of an item type. Refer to D.07A Data Element Dictionary for acceptable code values.	C	an..3
Not Used		1131	Code list identification code Code identifying a user or association maintained code list.	C	an..17
Not Used		3055	Code list responsible agency code Code specifying the agency responsible for a code list. Refer to D.07A Data Element Dictionary for acceptable code values.	C	an..3
Not Used	C212		ITEM NUMBER IDENTIFICATION Goods identification for a specified source.	C	1
Not Used		7140	Item identifier To identify an item.	C	an..35
Not Used		7143	Item type identification code Coded identification of an item type. Refer to D.07A Data Element Dictionary for acceptable code values.	C	an..3
Not Used		1131	Code list identification code Code identifying a user or association maintained code list.	C	an..17
Not Used		3055	Code list responsible agency code Code specifying the agency responsible for a code list. Refer to D.07A Data Element Dictionary for acceptable code values.	C	an..3

Segment: **MEA** **Measurements - (PD) - Line Item Gross Weight**
Position: 0690
Group: Segment Group 17 (Line Item) Conditional (Required)
Level: 3
Usage: Conditional (Optional)
Max Use: 1
Purpose: A segment specifying physical measurements of the despatched item in original or unpacked form.

Dependency Notes:

Semantic Notes:

Comments:

Notes:

Data Examples

MEA+PD+AAE+KGM:4420.00'

Data Element Summary

<u>User</u>	<u>Data</u>	<u>Component</u>	<u>Attributes</u>
<u>Attribute</u>	<u>Element</u>	<u>Element</u> <u>Name</u>	
M	6311	MEASUREMENT PURPOSE CODE QUALIFIER Code qualifying the purpose of the measurement. PD Physical dimensions (product ordered) Specified measurement dimensions refer to physical dimensions of a product, material or package.	M 1 an..3
Must Use	C502	MEASUREMENT DETAILS Identification of measurement type.	C 1
Must Use		6313 Measured attribute code Code specifying the attribute measured. AAE Item gross weight Gross weight at line item level.	C an..3
Not Used		6321 Measurement significance code Code specifying the significance of a measurement. Refer to D.07A Data Element Dictionary for acceptable code values.	C an..3
Not Used		6155 Non-discrete measurement name code Code specifying the name of a non-discrete measurement. Refer to D.07A Data Element Dictionary for acceptable code values.	C an..17
Not Used		6154 Non-discrete measurement name Name of a non-discrete measurement.	C an..70
Must Use	C174	VALUE/RANGE Measurement value and relevant minimum and maximum values of the measurement range.	C 1
M		6411 Measurement unit code Code specifying the unit of measurement.	M an..8

Must Use	6314	Measure To specify the value of a measurement. Notes to Trading Partner: Item Gross Weight No leading zeroes - round up to 1 if < 1	C	an..18
Not Used	6162	Range minimum quantity To specify the minimum value of a range.	C	n..18
Not Used	6152	Range maximum quantity To specify the maximum value of a range.	C	n..18
Not Used	6432	Significant digits quantity Count of the number of significant digits.	C	n..2
Not Used	7383	SURFACE OR LAYER CODE Code specifying the surface or layer of an object. Refer to D.07A Data Element Dictionary for acceptable code values.	C	1 an..3

Segment: **MEA** **Measurements - (PD) - Line Item Net Weight**
Position: 0690
Group: Segment Group 17 (Line Item) Conditional (Required)
Level: 3
Usage: Conditional (Optional)
Max Use: 1
Purpose: A segment specifying physical measurements of the despatched item in original or unpacked form.

Dependency Notes:

Semantic Notes:

Comments:

Notes:

Data Examples

MEA+PD+AAL+KGM:4415.00'

Data Element Summary

<u>User</u>	<u>Data</u>	<u>Component</u>		
<u>Attribute</u>	<u>Element</u>	<u>Element</u>	<u>Name</u>	<u>Attributes</u>
M	6311		MEASUREMENT PURPOSE CODE QUALIFIER	M 1 an..3
			Code qualifying the purpose of the measurement.	
			PD Physical dimensions (product ordered)	
			Specified measurement dimensions refer to physical dimensions of a product, material or package.	
Must Use	C502		MEASUREMENT DETAILS	C 1
			Identification of measurement type.	
		6313	Measured attribute code	C an..3
			Code specifying the attribute measured.	
			AAL Net weight	
			[6160] Weight (mass) of goods including any packing normally going with them to a buyer in a retail sale.	
		6321	Measurement significance code	C an..3
			Code specifying the significance of a measurement.	
			Refer to D.07A Data Element Dictionary for acceptable code values.	
		6155	Non-discrete measurement name code	C an..17
			Code specifying the name of a non-discrete measurement.	
			Refer to D.07A Data Element Dictionary for acceptable code values.	
		6154	Non-discrete measurement name	C an..70
			Name of a non-discrete measurement.	
Must Use	C174		VALUE/RANGE	C 1
			Measurement value and relevant minimum and maximum values of the measurement range.	
M		6411	Measurement unit code	M an..8
			Code specifying the unit of measurement.	

	6314	Measure To specify the value of a measurement. Notes to Trading Partner: Item Net Weight No leading zeroes - round up to 1 if < 1	C	an..18
	6162	Range minimum quantity To specify the minimum value of a range.	C	n..18
	6152	Range maximum quantity To specify the maximum value of a range.	C	n..18
	6432	Significant digits quantity Count of the number of significant digits.	C	n..2
Not Used	7383	SURFACE OR LAYER CODE Code specifying the surface or layer of an object. Refer to D.07A Data Element Dictionary for acceptable code values.	C	1 an..3

Segment: **QTY** **Quantity - (12) - Despatch Quantity**
Position: 0700
Group: Segment Group 17 (Line Item) Conditional (Required)
Level: 3
Usage: Conditional (Required)
Max Use: 1
Purpose: A segment to give quantity information concerning the product.
Dependency Notes:
Semantic Notes:
Comments:
Notes: **Data Examples**

QTY+12:1:PCE'

Data Element Summary

<u>User</u>	<u>Data</u>	<u>Component</u>	<u>Name</u>	<u>Attributes</u>
<u>Attribute</u>	<u>Element</u>	<u>Element</u>		
M	C186		QUANTITY DETAILS Quantity information in a transaction, qualified when relevant.	M 1
M		6063	Quantity type code qualifier Code qualifying the type of quantity. 12 Despatch quantity Quantity despatched by the seller.	M an..3
M		6060	Quantity Alphanumeric representation of a quantity.	M an..35
			Notes to Trading Partner: Despatch Quantity	
Must Use		6411	Measurement unit code Code specifying the unit of measurement.	C an..8

Group: **RFF** Segment Group 18: Reference - (ON) - Purchase Order Number
Position: 0830
Group: Segment Group 17 (Line Item) Conditional (Required)
Level: 3
Usage: Conditional (Required)
Max Use: 1
Purpose: A group of segments to give reference numbers and dates.

Segment Summary

<u>User</u>	<u>Pos.</u>	<u>Seg.</u>			<u>Req.</u>	<u>Max.</u>	<u>Group:</u>
<u>Attribute</u>	<u>No.</u>	<u>ID</u>	<u>Name</u>		<u>Des.</u>	<u>Use</u>	<u>Repeat</u>
M	0840	RFF	Reference - (ON) - Purchase Order Number		M	1	

Segment: **RFF Reference - (ON) - Purchase Order Number**
Position: 0840 (Trigger Segment)
Group: Segment Group 18 (Reference - (ON) - Purchase Order Number) Conditional
 (Required)
Level: 3
Usage: Mandatory
Max Use: 1
Purpose: A segment identifying documents related to the line item.
Dependency Notes:
Semantic Notes:
Comments:
Notes: **Data Examples**
 RFF+ON:55059001:00001'

Data Element Summary

<u>User</u>	<u>Data</u>	<u>Component</u>	<u>Name</u>	<u>Attributes</u>
<u>Attribute</u>	<u>Element</u>	<u>Element</u>		
M	C506		REFERENCE Identification of a reference.	M 1
M		1153	Reference code qualifier Code qualifying a reference. ON Order document identifier, buyer assigned [1022] Identifier assigned by the buyer to an order.	M an..3
Must Use		1154	Reference identifier Identifies a reference. Notes to Trading Partner: Purchase Order Number Received in DELJIT - SG4_SG7_SG8_RFF(ON)_02_1154	C an..70
Must Use		1156	Document line identifier - Purchase Order Line Number To identify a line of a document. Notes to Trading Partner: Purchase Order Line Number Received in DELJIT - SG4_SG7_SG8_RFF(ON)_03_1156	C an..6
Not Used		1056	Version identifier To identify a version.	C an..9
Not Used		1060	Revision identifier To identify a revision.	C an..6

Group: **RFF** Segment Group 18: Reference - (PC) - JIT Call Number
Position: 0830
Group: Segment Group 17 (Line Item) Conditional (Required)
Level: 3
Usage: Conditional (Required)
Max Use: 1
Purpose: A group of segments to give reference numbers and dates.

Segment Summary

<u>User</u>	<u>Pos.</u>	<u>Seg.</u>			<u>Req.</u>	<u>Max.</u>	<u>Group:</u>
<u>Attribute</u>	<u>No.</u>	<u>ID</u>	<u>Name</u>		<u>Des.</u>	<u>Use</u>	<u>Repeat</u>
M	0840	RFF	Reference - (PC) - JIT Call Number		M	1	

Segment: **RFF Reference - (PC) - JIT Call Number**
Position: 0840 (Trigger Segment)
Group: Segment Group 18 (Reference - (PC) - JIT Call Number) Conditional (Required)
Level: 3
Usage: Mandatory
Max Use: 1
Purpose: A segment identifying documents related to the line item.
Dependency Notes:
Semantic Notes:
Comments:
Notes: **Data Examples**

RFF+PC:1234567890'

Data Element Summary

<u>User</u>	<u>Data</u>	<u>Component</u>	<u>Name</u>	<u>Attributes</u>
<u>Attribute</u>	<u>Element</u>	<u>Element</u>		
M	C506		REFERENCE Identification of a reference.	M 1
M		1153	Reference code qualifier Code qualifying a reference. PC Production code Number assigned by the manufacturer to a specified article or batch to identify the manufacturing date etc. for subsequent reference.	M an..3
		1154	Reference identifier Identifies a reference.	C an..70
Notes to Trading Partner:				
Adient JIT Call Number				
Received in DELJIT - SG4_GIR(4)_02_01_7402				
		1156	Document line identifier - Purchase Order Line Number To identify a line of a document.	C an..6
		1056	Version identifier To identify a version.	C an..9
		1060	Revision identifier To identify a revision.	C an..6

Group: **RFF** Segment Group 18: Reference - (APM) - Adient Internal Sequence
Number
Position: 0830
Group: Segment Group 17 (Line Item) Conditional (Required)
Level: 3
Usage: Conditional (Required)
Max Use: 1
Purpose: A group of segments to give reference numbers and dates.

Segment Summary

<u>User</u> <u>Attribute</u>	<u>Pos.</u> <u>No.</u>	<u>Seg.</u> <u>ID</u>	<u>Name</u>	<u>Req.</u> <u>Des.</u>	<u>Max.</u> <u>Use</u>	<u>Group:</u> <u>Repeat</u>
M	0840	RFF	Reference - (APM) - Adient Internal Sequence Number	M	1	

Segment: **RFF** Reference - (APM) - Adient Internal Sequence Number
Position: 0840 (Trigger Segment)
Group: Segment Group 18 (Reference - (APM) - Adient Internal Sequence Number)
 Conditional (Required)
Level: 3
Usage: Mandatory
Max Use: 1
Purpose: A segment identifying documents related to the line item.
Dependency Notes:
Semantic Notes:
Comments:
Notes: **Data Examples**

RFF+APM:1234567890'

Data Element Summary

<u>User</u>	<u>Data</u>	<u>Component</u>	<u>Name</u>	<u>Attributes</u>
<u>Attribute</u>	<u>Element</u>	<u>Element</u>		
M	C506		REFERENCE Identification of a reference.	M 1
M		1153	Reference code qualifier Code qualifying a reference. APM Party sequence number Reference identifying a party sequence number.	M an..3
		1154	Reference identifier Identifies a reference. Notes to Trading Partner: Adient Internal Sequence Number Received in DELJIT - SEQ_02_01_1050	C an..70
		1156	Document line identifier To identify a line of a document.	C an..6
		1056	Version identifier To identify a version.	C an..9
		1060	Revision identifier To identify a revision.	C an..6

Group: **LOC** **Segment Group 20: Place/Location Identification - (159) - Adient Point of Fit**
Position: 0920
Group: Segment Group 17 (Line Item) Conditional (Required)
Level: 3
Usage: Conditional (Required)
Max Use: 1
Purpose: A group of segments giving location information and where relevant, additional addresses, date and time, and quantities.

Segment Summary

<u>User</u>	<u>Pos.</u>	<u>Seg.</u>	<u>Name</u>	<u>Req.</u>	<u>Max.</u>	<u>Group:</u>
<u>Attribute</u>	<u>No.</u>	<u>ID</u>		<u>Des.</u>	<u>Use</u>	<u>Repeat</u>
M	0930	LOC	Place/Location Identification - (159) - Adient Point of Fit	M	1	

Segment: **LOC Place/Location Identification - (159) - Adient Point of Fit**
Position: 0930 (Trigger Segment)
Group: Segment Group 20 (Place/Location Identification - (159) - Adient Point of Fit)
 Conditional (Required)
Level: 3
Usage: Mandatory
Max Use: 1
Purpose: A segment identifying a specific location to which products will be delivered.
Dependency Notes:
Semantic Notes:
Comments:
Notes: **Data Examples**

LOC+159+24000'

Data Element Summary

<u>User</u>	<u>Data</u>	<u>Component</u>	<u>Name</u>	<u>Attributes</u>
<u>Attribute</u>	<u>Element</u>	<u>Element</u>		
M	3227		LOCATION FUNCTION CODE QUALIFIER Code identifying the function of a location. 159 Additional internal destination Any location within the consignee's premises where the goods are moved to.	M 1 an..3
Must Use	C517		LOCATION IDENTIFICATION Identification of a location by code or name.	C 1
Must Use		3225	Location identifier To identify a location.	C an..35
Notes to Trading Partner:				
Adient Point of Fit				
Received in DELJIT - SG4_SG7_SG10_LOC(159)_02_01_3225				
Not Used		1131	Code list identification code Code identifying a user or association maintained code list.	C an..17
Not Used		3055	Code list responsible agency code Code specifying the agency responsible for a code list. Refer to D.07A Data Element Dictionary for acceptable code values.	C an..3
Not Used		3224	Location name Name of the location.	C an..256
Not Used	C519		RELATED LOCATION ONE IDENTIFICATION Identification the first related location by code or name.	C 1
Not Used		3223	First related location identifier To identify a first related location.	C an..35
Not Used		1131	Code list identification code Code identifying a user or association maintained code list.	C an..17
Not Used		3055	Code list responsible agency code Code specifying the agency responsible for a code list. Refer to D.07A Data Element Dictionary for acceptable code values.	C an..3
Not Used		3222	First related location name Name of first related location.	C an..70
Not Used	C553		RELATED LOCATION TWO IDENTIFICATION Identification of second related location by code or name.	C 1

Not Used	3233	Second related location identifier To identify a second related location.	C	an..35
Not Used	1131	Code list identification code Code identifying a user or association maintained code list.	C	an..17
Not Used	3055	Code list responsible agency code Code specifying the agency responsible for a code list. Refer to D.07A Data Element Dictionary for acceptable code values.	C	an..3
Not Used	3232	Second related location name Name of the second related location.	C	an..70
Not Used	5479	RELATION CODE Code specifying a relation.	C	1 an..3

Segment: **UNT** Message Trailer
Position: 1160
Group:
Level: 0
Usage: Mandatory
Max Use: 1
Purpose: A service segment ending a message, giving the total number of segments in the message (including the UNH & UNT) and the control reference number of the message.

Dependency Notes:

Semantic Notes:

Comments:

Notes: **Data Examples**

UNZ+1+000000001'

Data Element Summary

<u>User</u>	<u>Data</u>	<u>Component</u>	<u>Name</u>	<u>Attributes</u>
<u>Attribute</u>	<u>Element</u>	<u>Element</u>		
M	0074		NUMBER OF SEGMENTS IN A MESSAGE Control count of number of segments in a message. Notes to Trading Partner: Count of segments between and including UNH and UNT segments	M 1 n..6
M	0062		MESSAGE REFERENCE NUMBER Unique message reference assigned by the sender. Notes to Trading Partner: Must match the value sent in the UNH_0062 element.	M 1 an..14

Despatch Advice Example

UNB+UNOC:3+SENDER-ID+RECEIVER-ID+141129:1300+000000001++DESADVJIS'
UNH+1+DESADV:D:07A:UN:GA0220'
BGM+351+6041128+9'
DTM+137:201411291300:203'
DTM+11:201411291258:203'
DTM+132:201411291530:203'
MEA+AAX+AAD+KGM:8000'
MEA+AAX+AAL+KGM:7900'
NAD+ST+1769::92++SHIP TO NAME'
LOC+11+1769'
NAD+BY+1769::92++ADIENT PLANT NAME'
NAD+SE+309814::92++SELLER NAME'
NAD+CA+1234567890::91++CARRIER NAME'
TOD+6++1:::EXWORKS'
CPS+1++4'
LIN+1++1234561-01:IN'
PIA+1+MIKKPK1:SA'
QTY+12:1:PCE'
RFF+AAN:1234567890#9876543210'
RFF+ON:55059001:00001'
RFF+PC:12345670'
RFF+APM:123450'
LOC+159+1769'
LIN+1++1234562-01:IN'
PIA+1+MIKKPK2:SA'
QTY+12:2:PCE'
RFF+AAN:1234567890#9876543211'
RFF+ON:55059002:00001'
RFF+PC:12345670'
RFF+APM:123450'
LOC+159+1769'
LIN+1++1234563-01:IN'
PIA+1+MIKKPK3:SA'
QTY+12:3:PCE'
RFF+AAN:1234567892#9876543212'
RFF+ON:55059003:00001'
RFF+PC:12345671'
RFF+APM:123451'
LOC+159+1769'
LIN+1++1234564-01:IN'
PIA+1+MIKKPK4:SA'
QTY+12:4:PCE'
RFF+AAN:1234567893#9876543213'
RFF+ON:55059004:00001'
RFF+PC:12345672'
RFF+APM:123452'
LOC+159+1769'
LIN+1++1234565-01:IN'

PIA+1+MIKKPK5:SA'
QTY+12:5:PCE'
RFF+AAN:1234567894#9876543214'
RFF+ON:55059005:00001'
RFF+PC:12345673'
RFF+APM:123453'
LOC+159+1769'
UNT+67+1'
UNZ+1+000000001'